



PRESSURE
TEMPERATURE
LOG

Company UNIVERSITY OF UTAH

Well 78-32

Field FORGE

County BEAVER State UTAH

Location: API # :

Other Services

Company UNIVERSITY OF UTAH
Well 78-32
Field FORGE
County BEAVER
State UTAH

Permanent Datum
Log Measured From
Drilling Measured From
SEC TWP RGE
GROUND LEVEL
Elevation
K.B.
D.F.
G.L.

Date 06/28/21

Run Number	1		
Depth Driller	3000'		
Depth Logger	3230'		
Bottom Logged Interval	3230'		
Top Log Interval	SURFACE		
Open Hole Size	N/A		
Type Fluid	N/A		
Density / Viscosity	N/A		
Max. Recorded Temp.	223°F		
Estimated Cement Top	N/A		
Time Well Ready	N/A		
Time Logger on Bottom	N/A		
Equipment Number	WL 1		
Location	FORGE		
Recorded By	COREY BIHM		
Witnessed By	N/A		

Borehole Record				Tubing Record			
Run Number	Bit	From	To	Size	Weight	From	To

Casing Record	Size	Mgt/Ft	Top	Bottom
Surface String	13-3/8"	54.5#	SURFACE	60'
Prot. String	9-5/8"	36#	SURFACE	700'
Production String	5-1/2"	17#	SURFACE	3000'
Liner				

<<< Fold Here >>>

All interpretations are opinions based on inferences from electrical or other measurements and we cannot and do not guarantee the accuracy or correctness of any interpretation, and we shall not, except in the case of gross or willful negligence on our part, be liable or responsible for any loss, costs, damages, or expenses incurred or sustained by anyone resulting from any interpretation made by any of our officers, agents or employees. These interpretations are also subject to our general terms and conditions set out in our current Price Schedule.

Comments

LOG WAS MEASURED FROM GROUND LEVEL
TAG @ 3230'
MAX TEMP 223°F
MAX PRESSURE 1342PSI
PERFORATIONS N/A
"THANK YOU FOR USING DI DRILL SURVEY SERVICES"

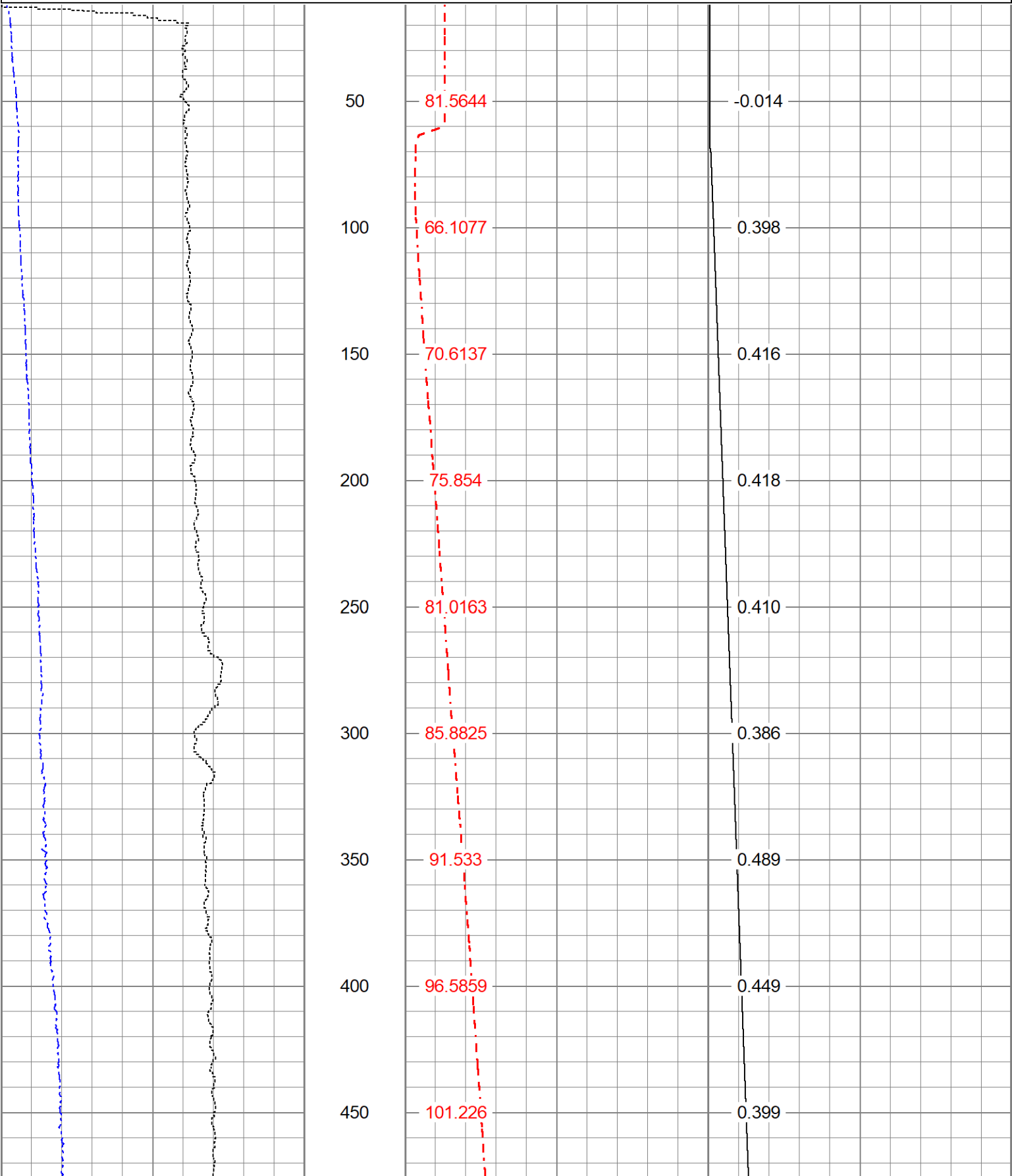


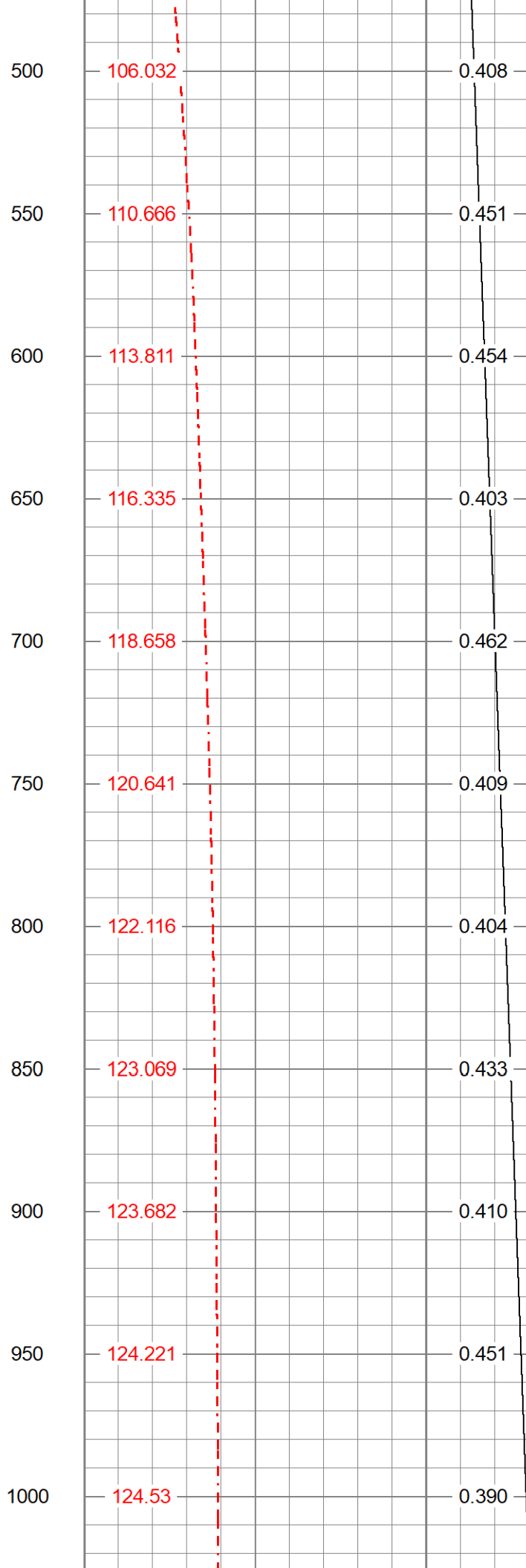
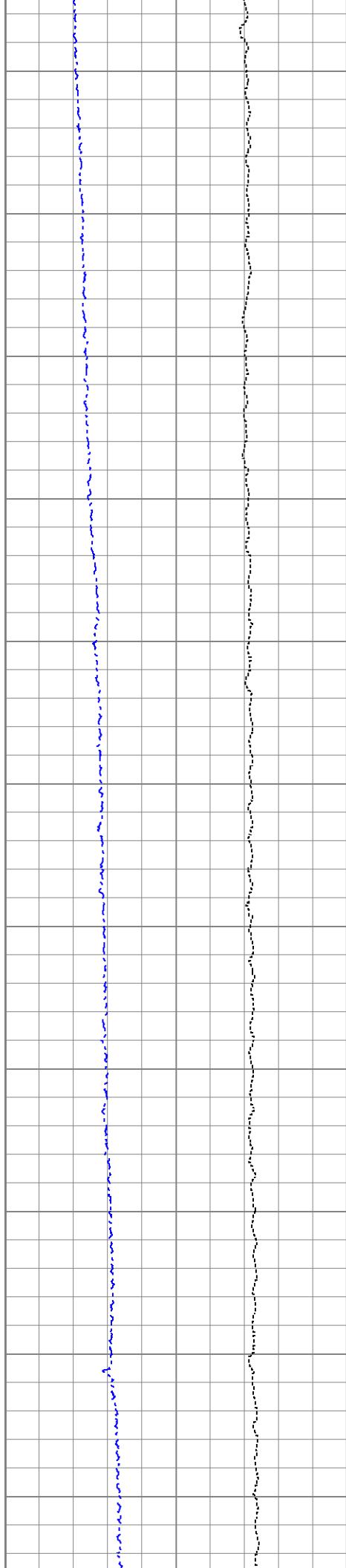
PRESSURE/TEMPERATURE LOG MAIN PASS

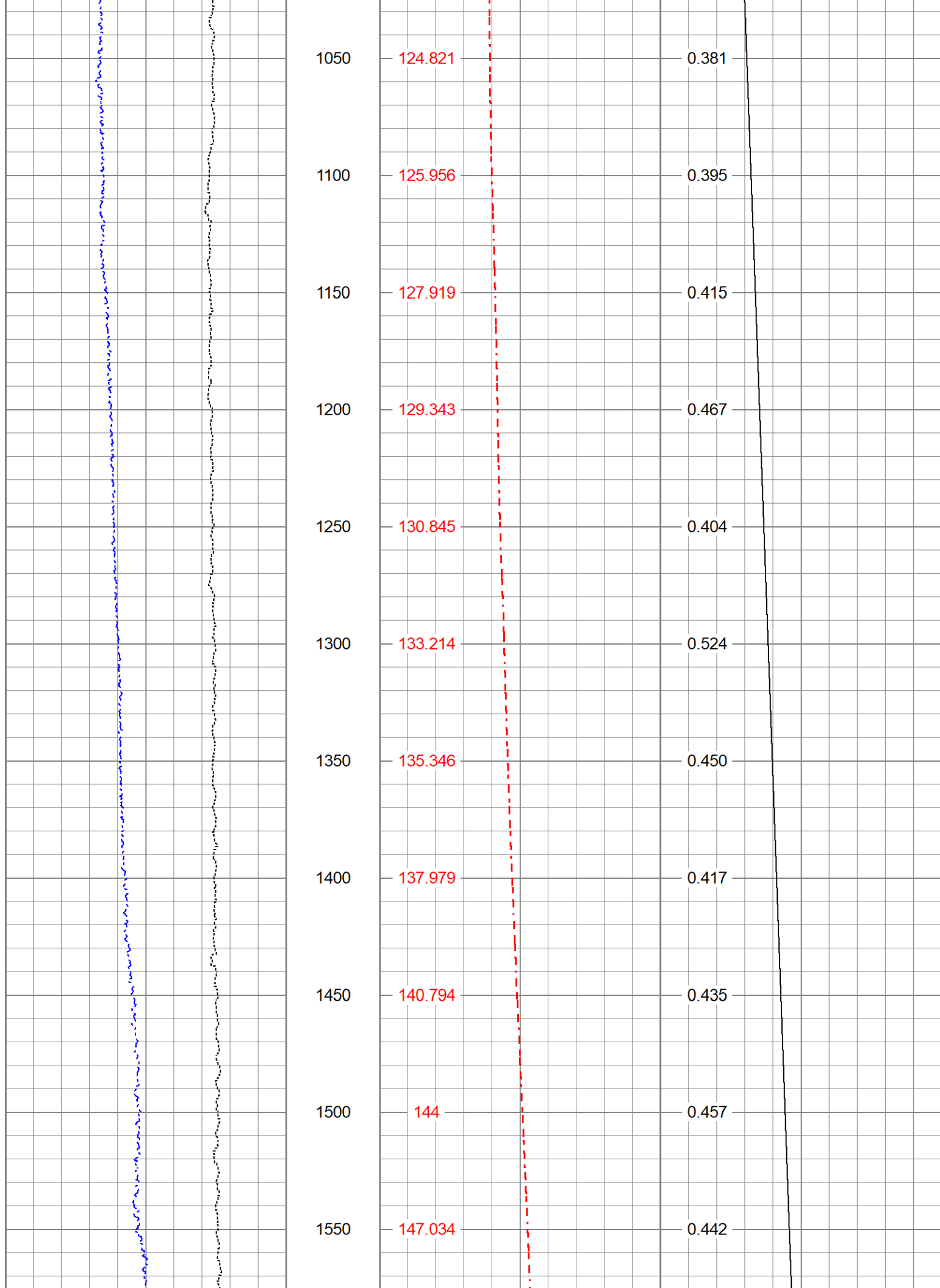
SCALE=2"/100'

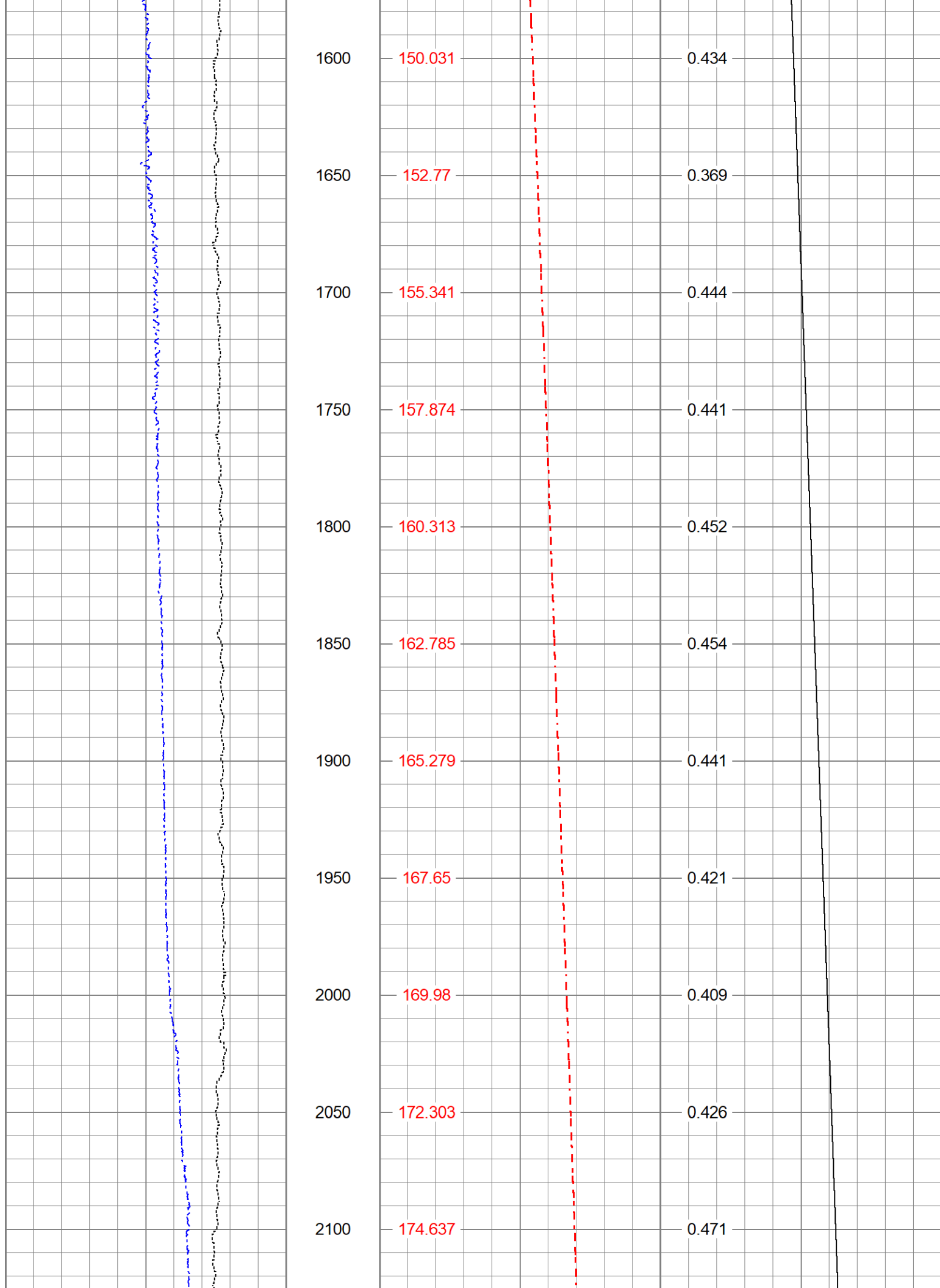
Database File	forge_78-32_pt.db
Dataset Pathname	pass4
Presentation Format	press_temp
Dataset Creation	Mon Jun 28 10:24:04 2021
Charted by	Depth in Feet scaled 1:600

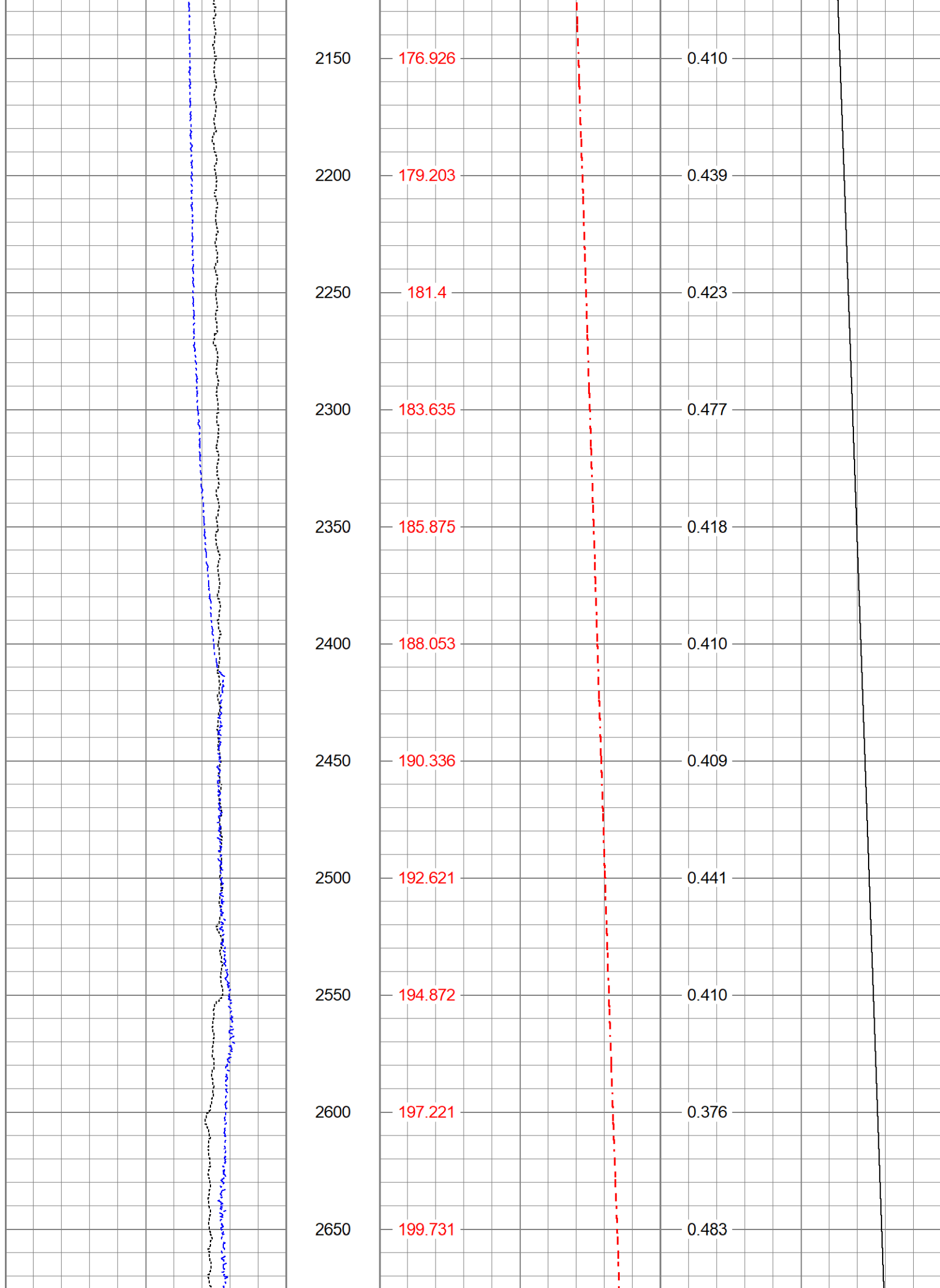
0	LSPD (ft/min)	100	60	TEMP (degF)	225	-10	PRES (psi)	1400
0	LTEN (lb)	700	TEMP			DPRES		
			(degF)			(psi/ft)		

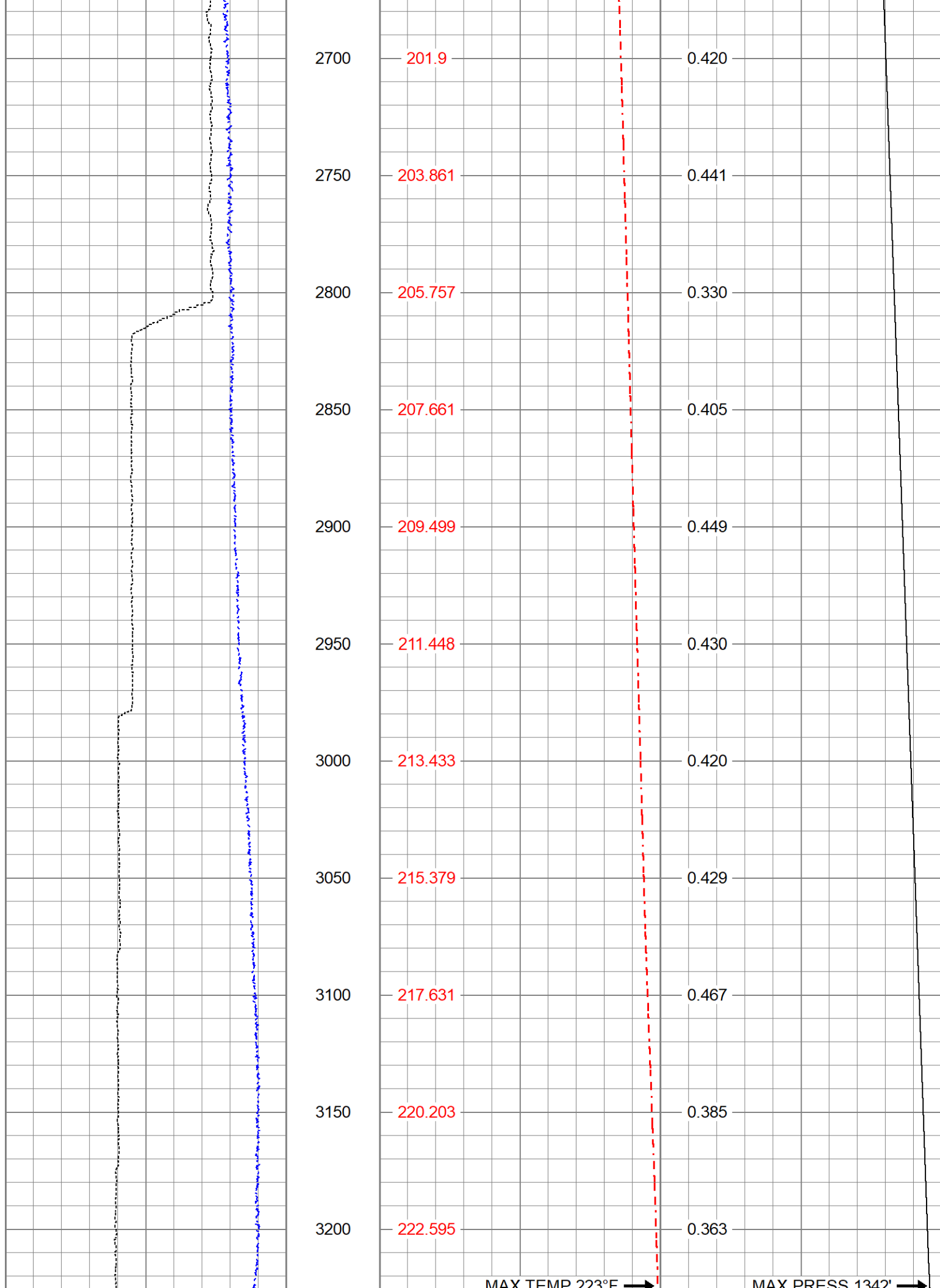














TAG @ 3230' →			MAX TEMP 225			MAX PRESS 1342		
0	LSPD (ft/min)	100	60	TEMP (degF)	225	-10	PRES (psi)	1400
0	LTEN (lb)	700	TEMP (degF)			DPRES (psi/ft)		

Sensor	Offset (ft)	Schematic	Description	Length (ft)	O.D. (in)	Weight (lb)
ITEMP PRES	2.63 2.58		KUSTER_PL-PT (G5155)	6.00	1.75	20.00
TEMP	1.33					
LOCTIM UTCTIM	0.00 0.00					
Dataset:			forge_78-32_pt.db: field/well/run1/pass4			
Total length:			6.00 ft			
Total weight:			20.00 lb			
O.D.:			1.75 in			

	Company	UNIVERSITY OF UTAH
	Well	78-32
	Field	FORGE
	County	BEAVER
	State	UTAH
		Country