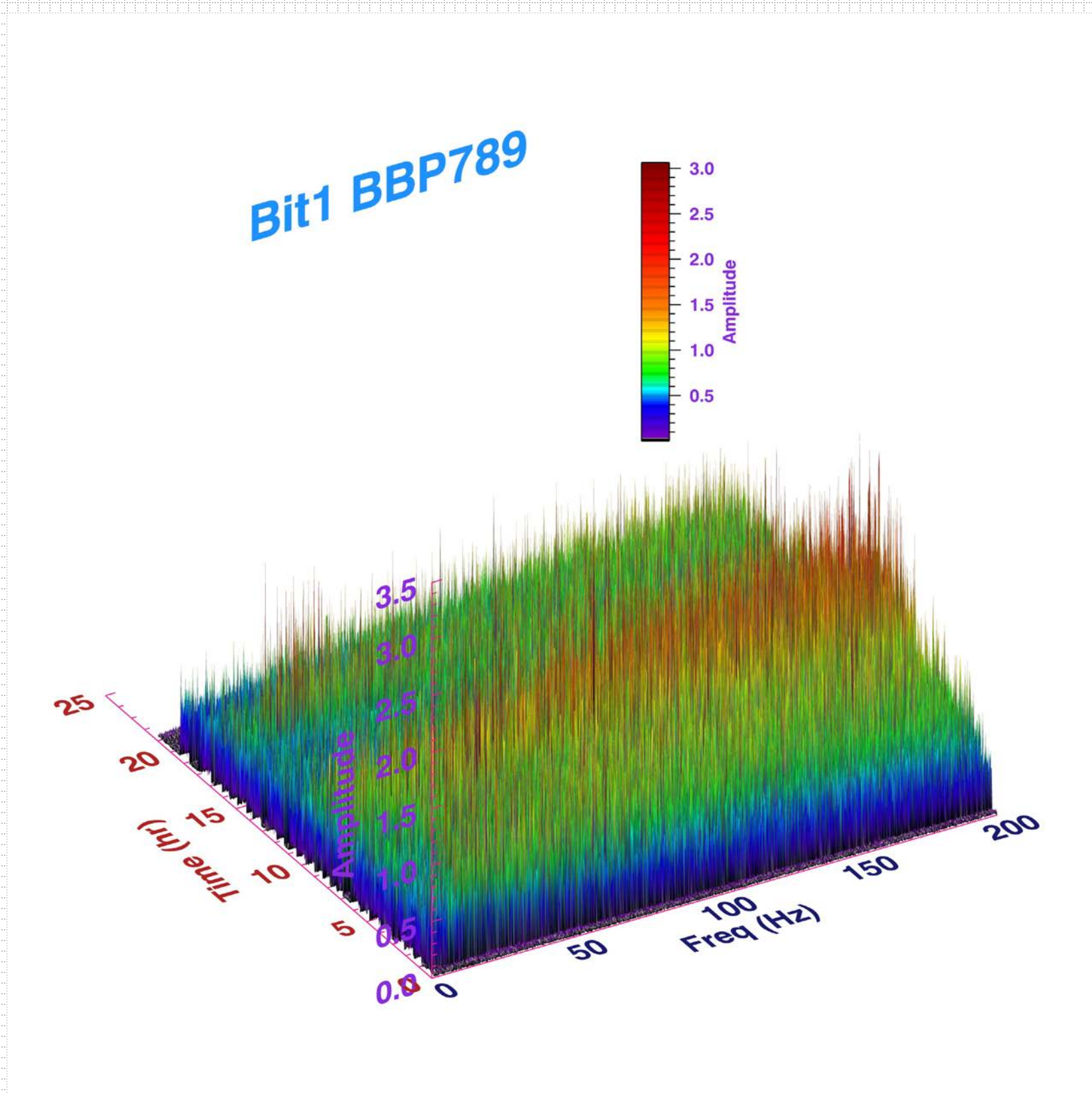
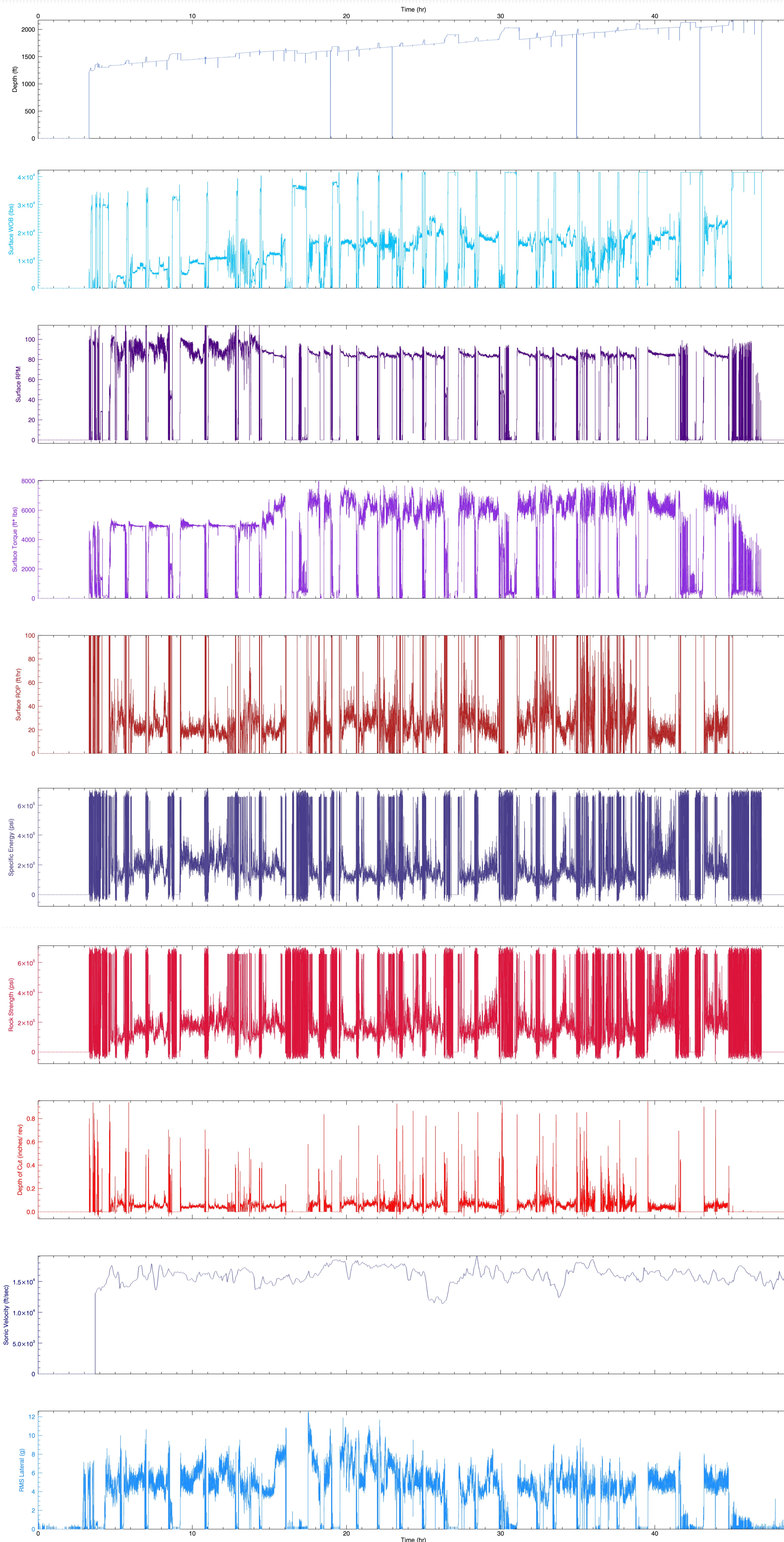


BIT 1 Chocolate Mountain

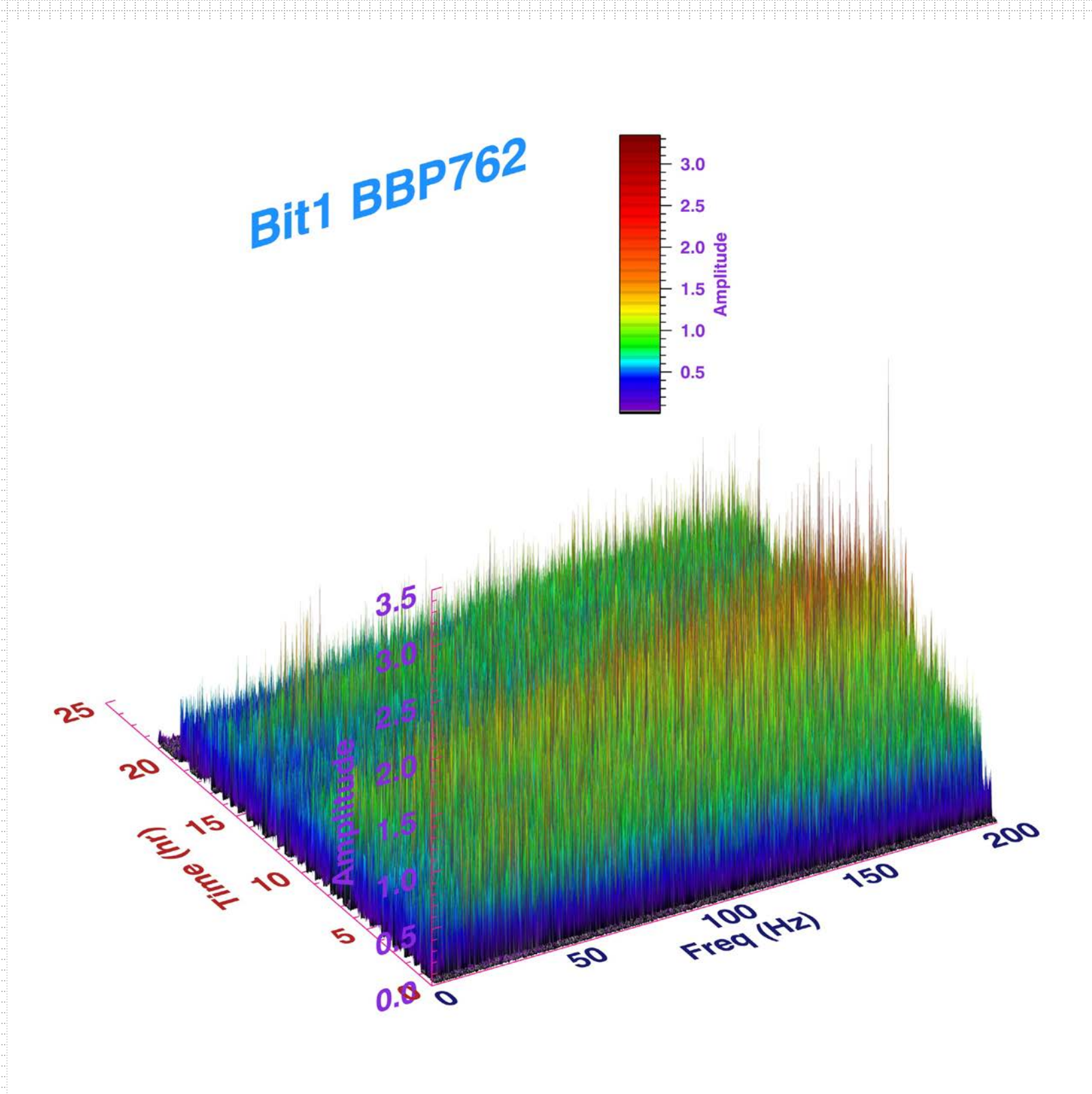
DRILLED 725 FEET IN GRANITIC ROCK



BIT 1 BEFORE



HIGH RATE
LATERAL
VIBRATION
SPECTRUM

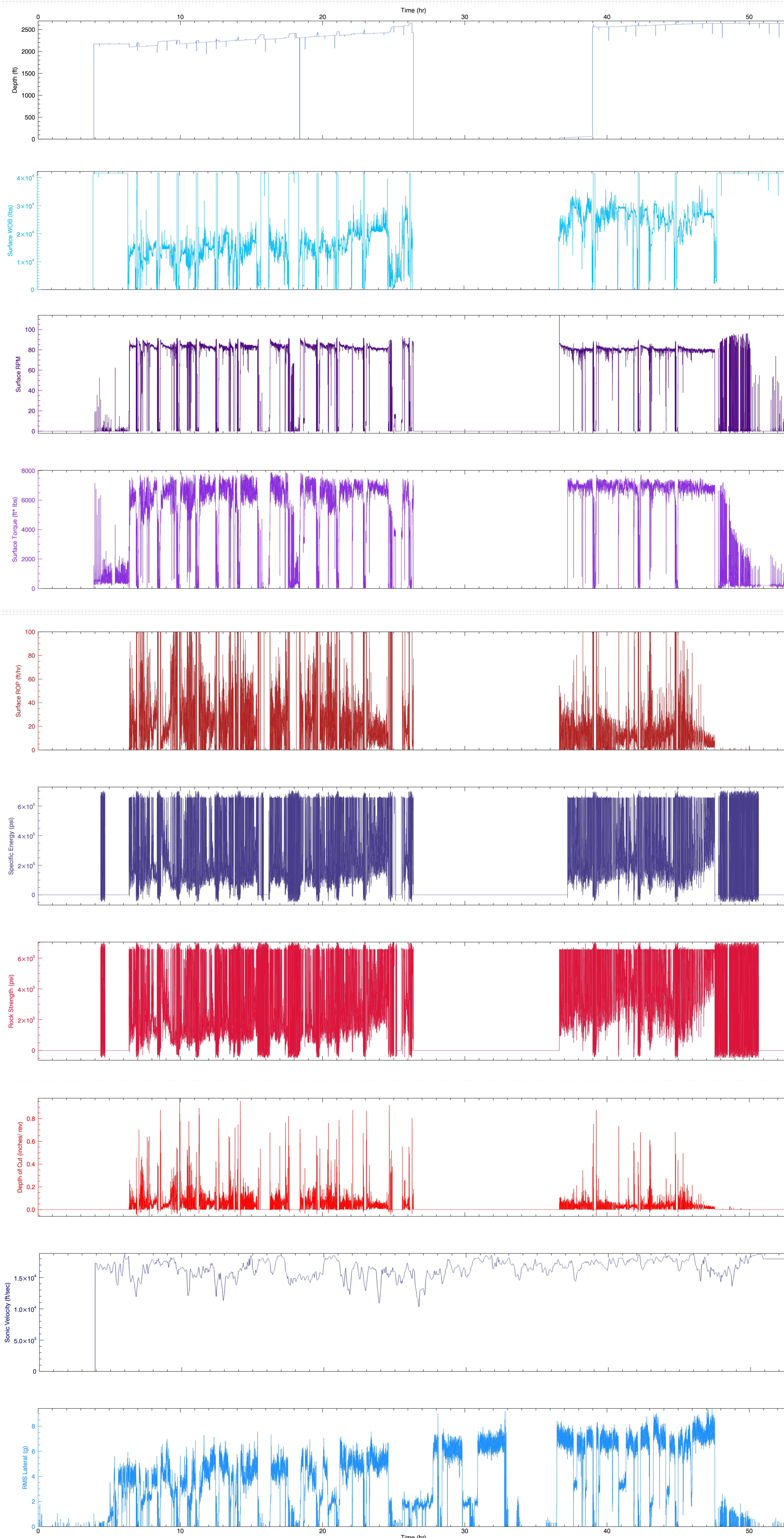


BIT 1 AFTER

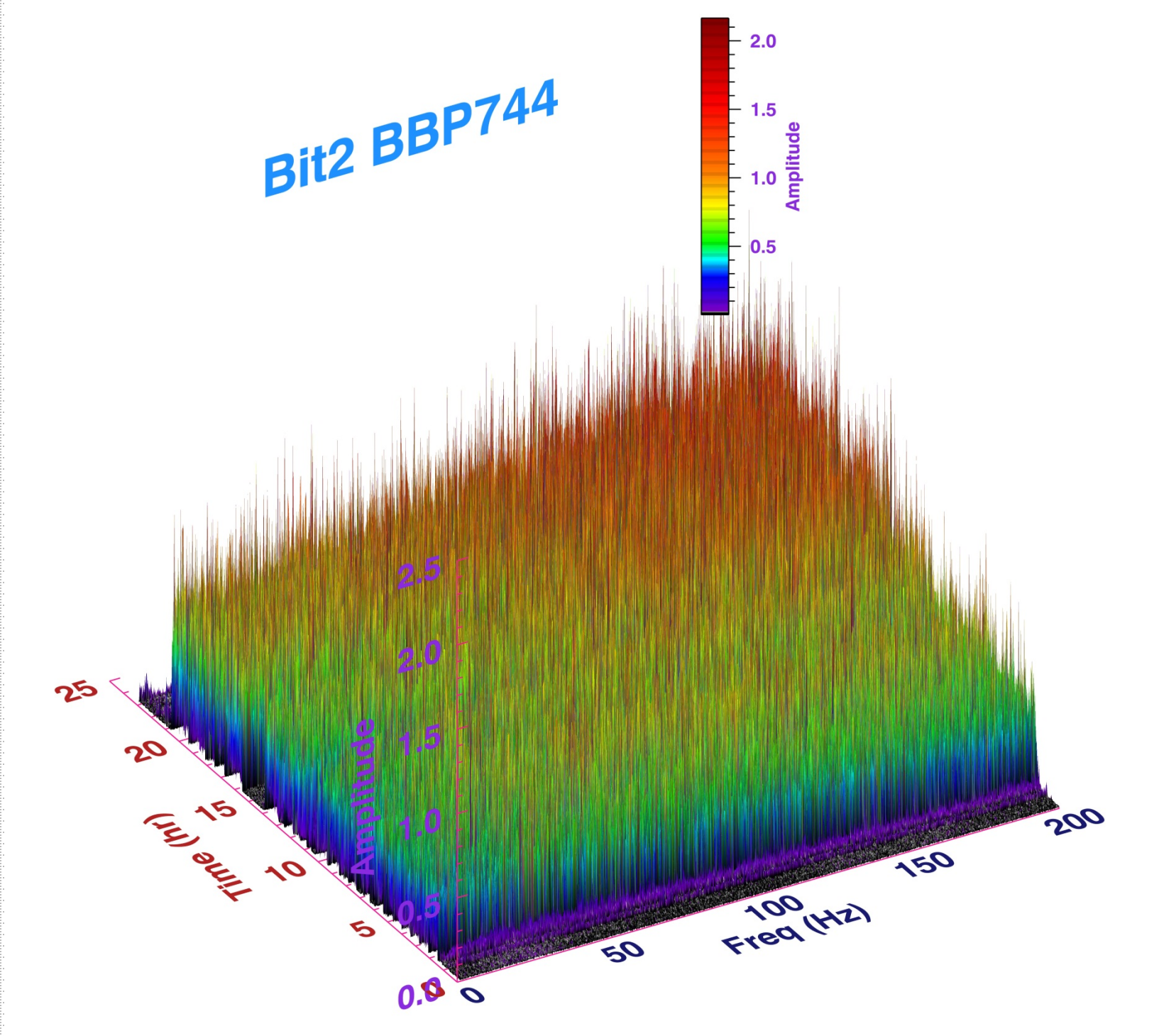


Sandia National Laboratories is a multi-program laboratory managed and operated by Sandia Corporation, a wholly owned subsidiary of Lockheed Martin Corporation, for the U.S. Department of Energy's National Nuclear Security Administration under contract DE-AC04-94AL85000
Sandia approval number: 2012-5535P

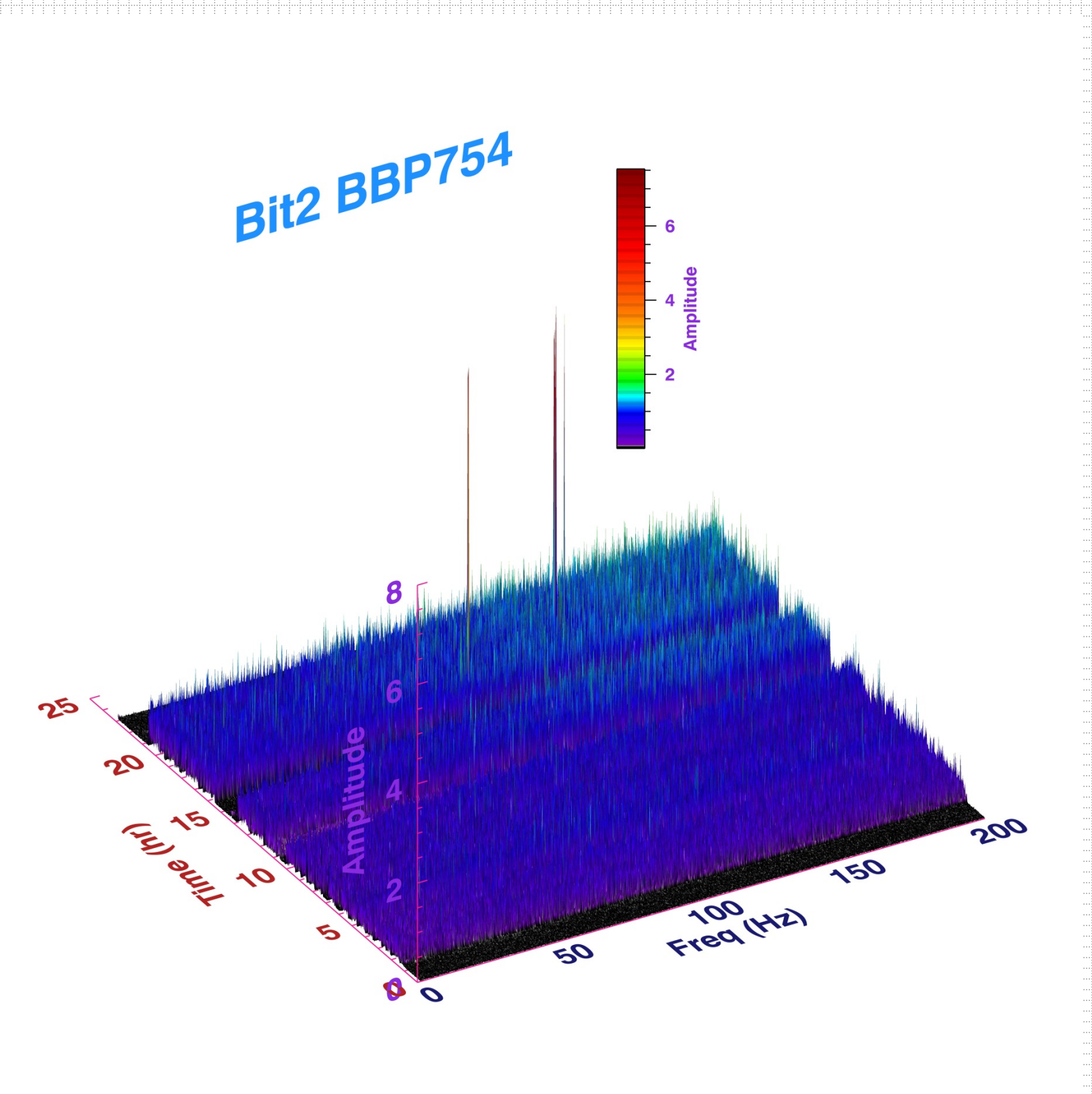
BIT 2 Chocolate Mountain



BIT 2 BEFORE



HIGH RATE
LATERAL
VIBRATION
SPECTRUM



BIT 2 AFTER



U.S. DEPARTMENT OF
ENERGY

Sandia National Laboratories is a multi-program laboratory managed and operated by Sandia Corporation, a wholly owned subsidiary of Lockheed Martin Corporation, for the U.S. Department of Energy's National Nuclear Security Administration under contract DE-AC04-94AL85000 Sandia approval number: 2012-5535P