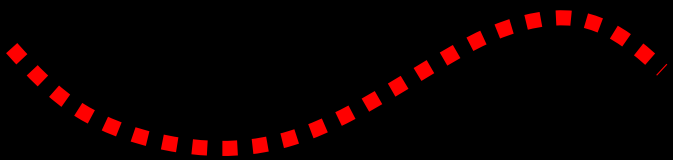


Utah FORGE Stimulation 2 Core Images with Annotated Features and Depths

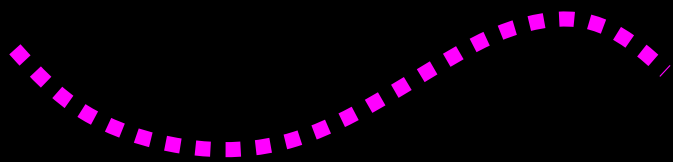
January 2025,
Clay Jones, PhD
Energy & Geoscience Institute at the University of Utah
cjones@egi.utah.edu

Core Images without annotations can be found here:
<https://gdr.openei.org/submissions/1566>

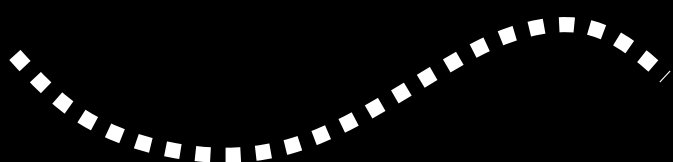
LEGEND



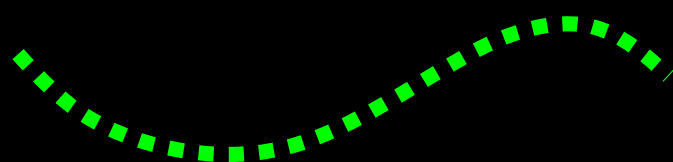
Planar Fracture



Semi-Planar Fracture



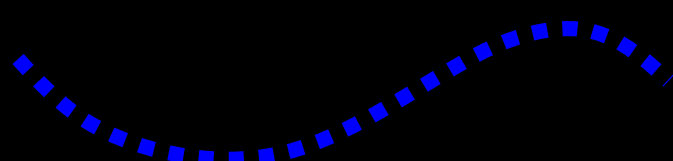
Unbroken Mineralized Fracture



Rough Fracture



Concave-Convex Surface



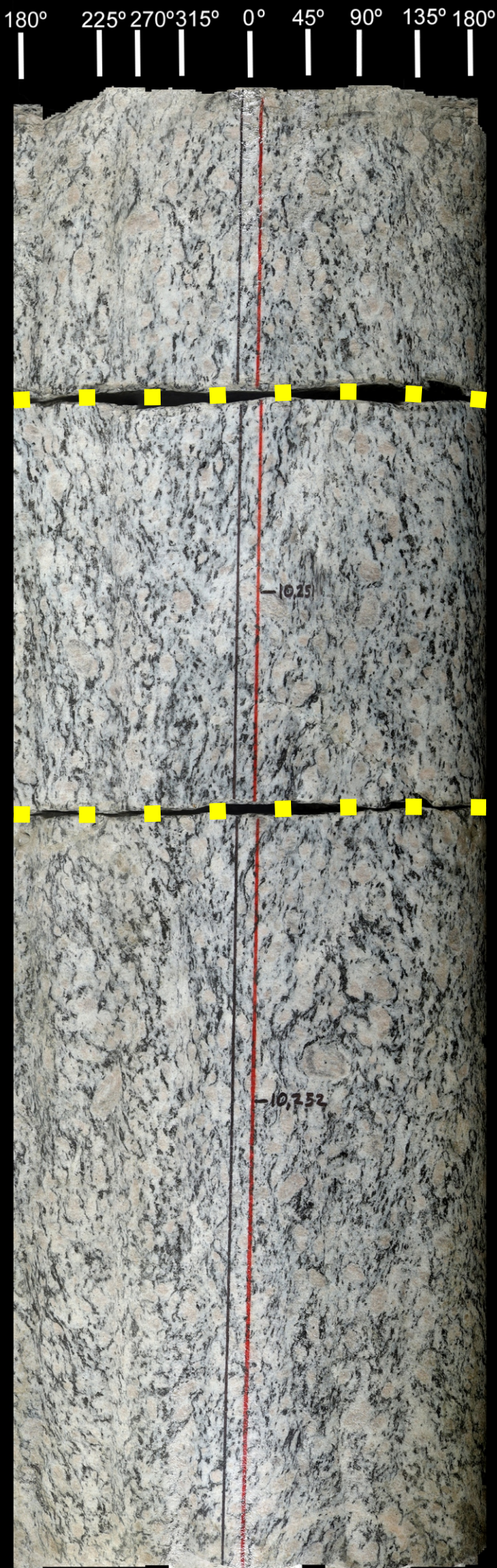
Curviplanar Surface



Effervescence with 10% Hcl

16B(78)-32

10250-10253



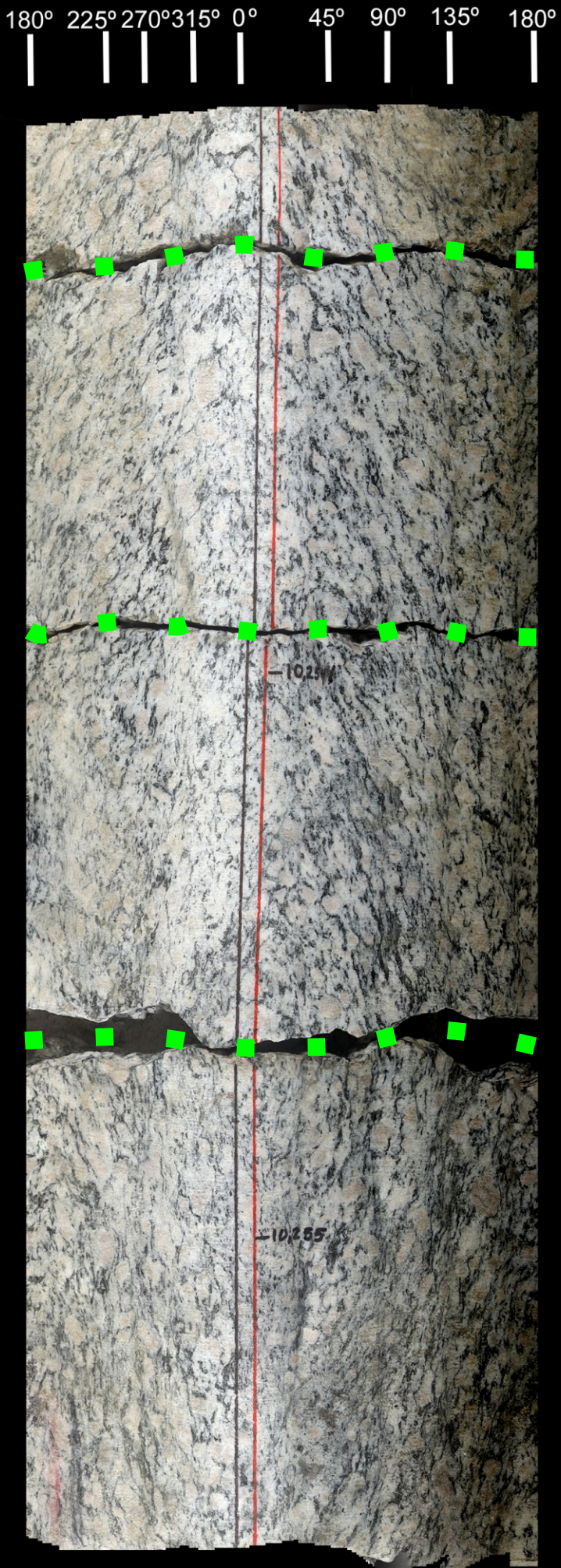
10,250.6 ft

10,251.4 ft



16B(78)-32

10253-10255.6



10,253.2 ft

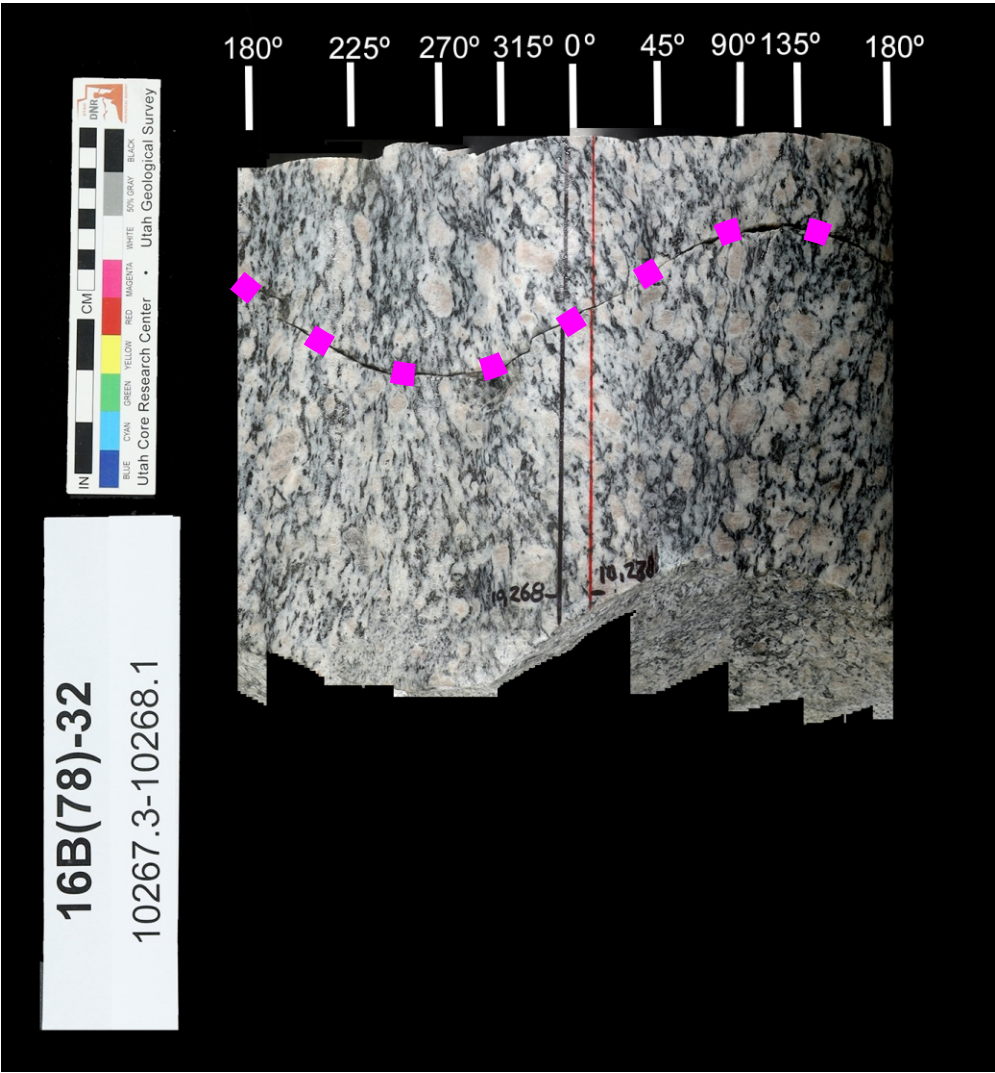
10,253.9 ft

10,254.7 ft

16B(78)-32

10264-10267.3





10,267.55 ft

16B(78)-32

10274-10277



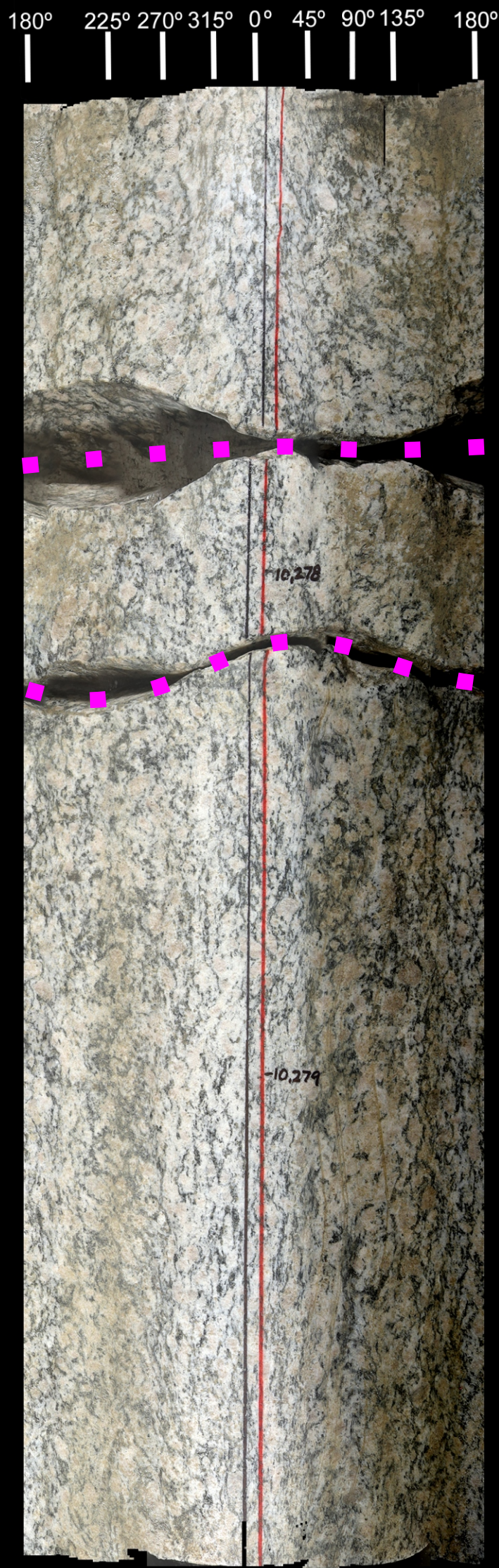
10,275.9 ft

10,276.1 ft

10,276.4 ft

16B(78)-32

10277-10280

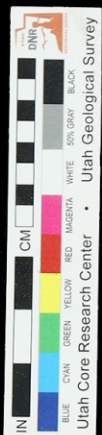


10,277.7 ft

10,278.2 ft

16B(78)-32

10280-10283



10,281.7 ft

10,282.3 ft



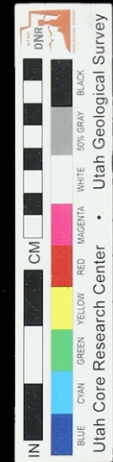
16B(78)-32

10283-10286



10,283.7 ft
Mylonite or dike?

10,285.15 ft
fracture partially
cuts vein



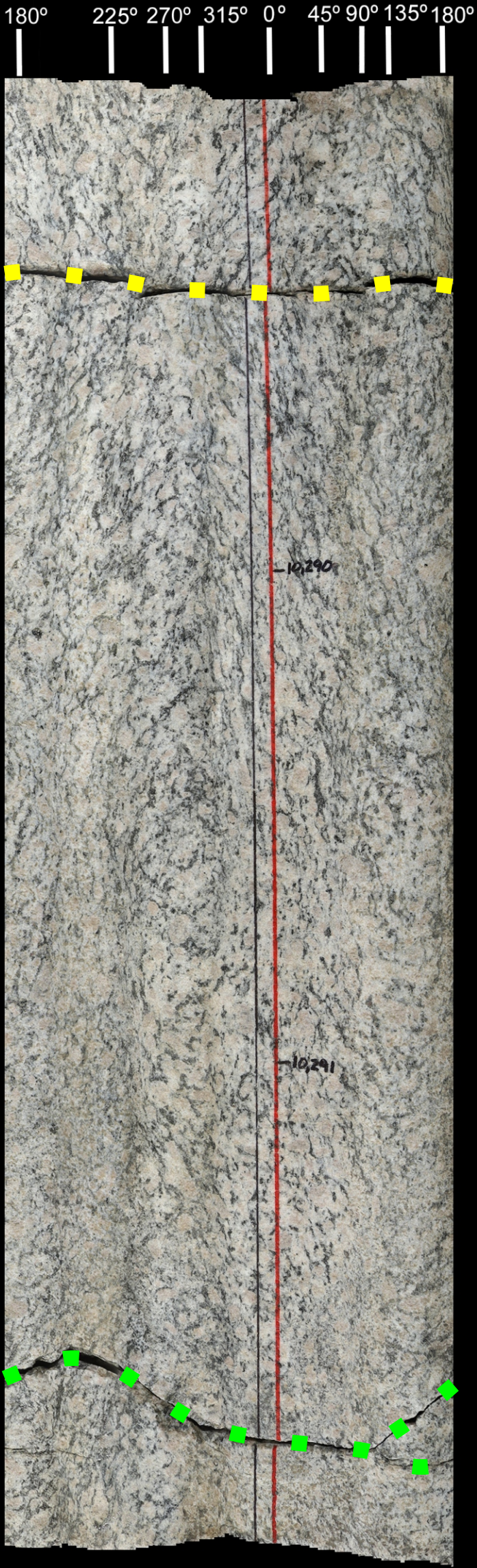
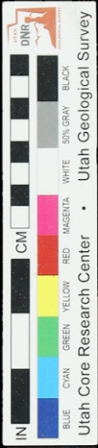
16B(78)-32

10286-10289



10,288 ft

16B(78)-32
10289-10292



10,289.4 ft

10,291.7 ft

16B(78)-32
10292-10295

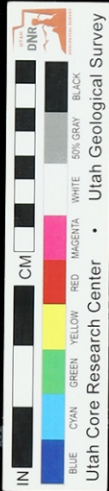


10,293.3 ft

10,294.9 ft

16B(78)-32

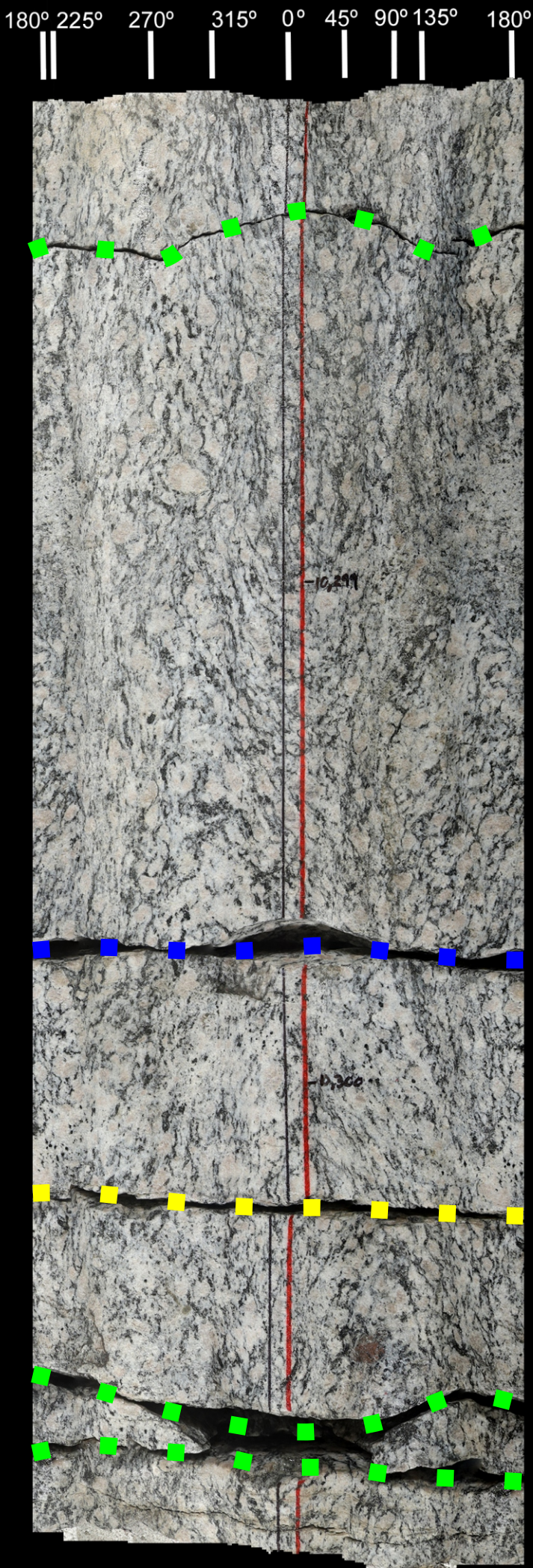
10295-10298



180° 225° 270° 315° 0° 45° 90° 135° 180°



16B(78)-32
10298-10301



10,298.3 ft

10,299.7 ft

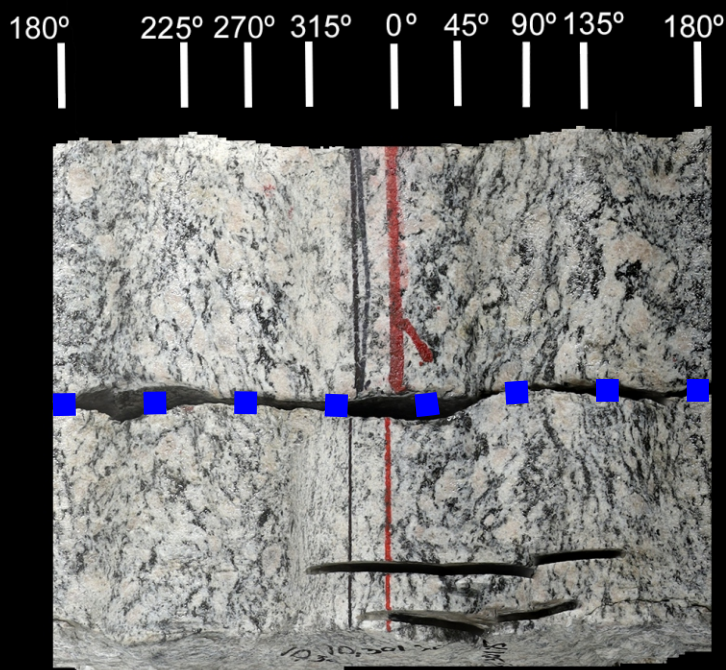
10,300.4 ft

10,300.7 ft

10,300.8 ft

16B(78)-32

10301-10301.75



10,301.3 ft