

Logical Model for Geothermal Data  
Concerning  
Wells, Fields, Power Plants and Related Analyses

Derived from Tables, Figures and other Content in Reports from the Raft River Geothermal Project:

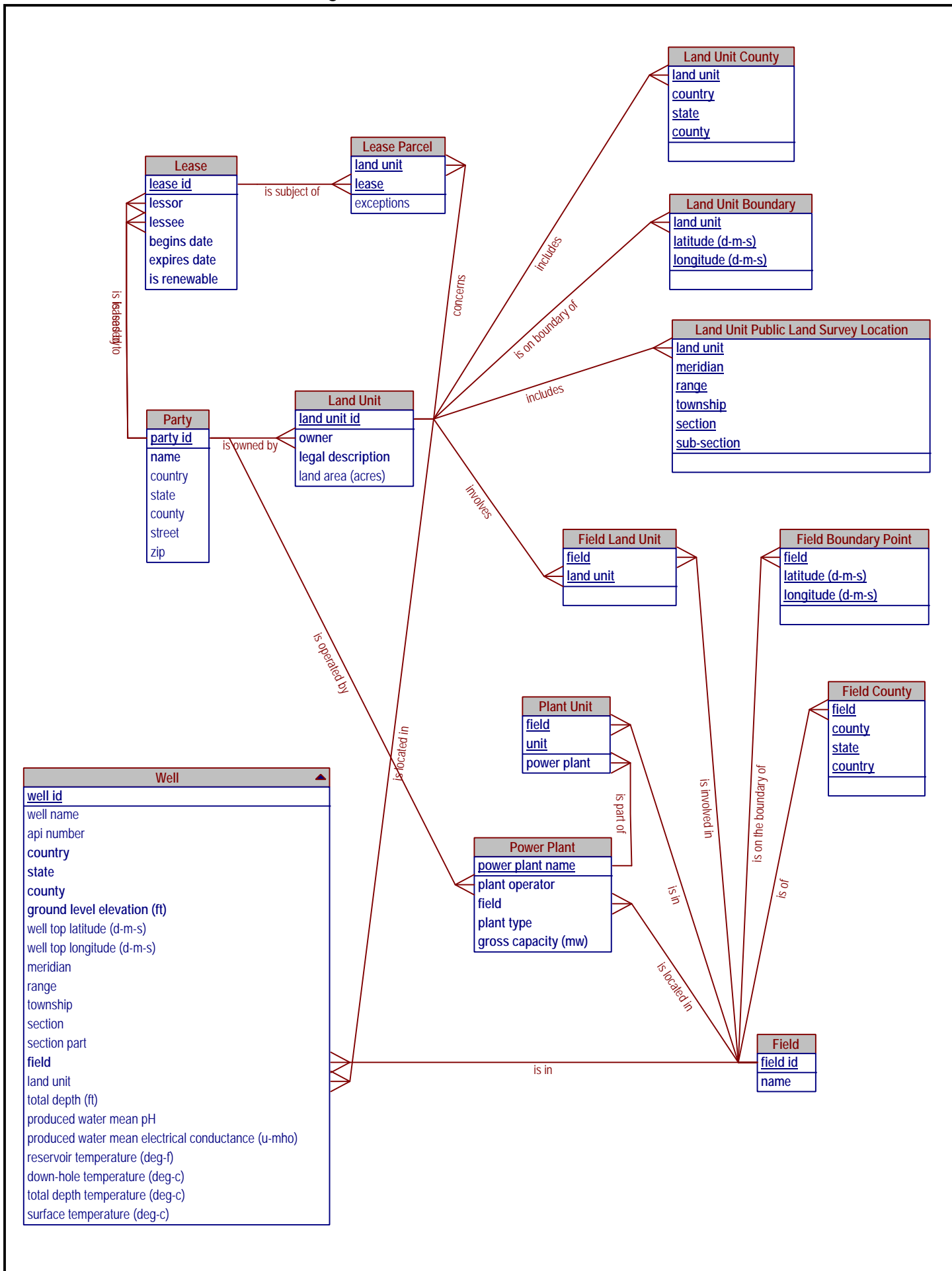
"Technical Report on the Raft River Geothermal Resource, Cassia County, Idaho,"  
GeothermEx, Inc., August 2002.

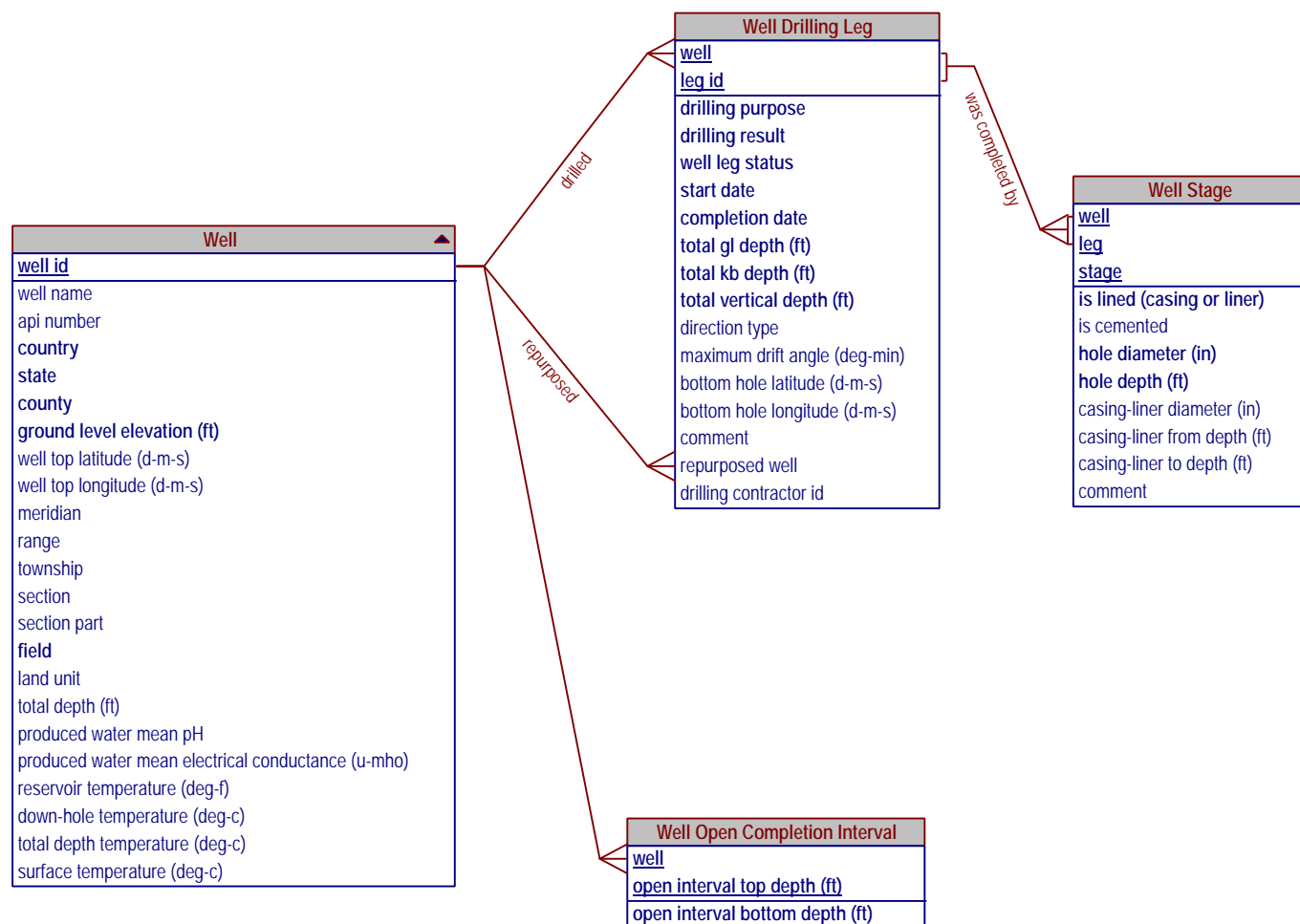
"Results from the Short-Term Well Testing Program at the Raft River Geothermal Field, Cassia County, Idaho,"  
GeothermEx, Inc., October 2004.

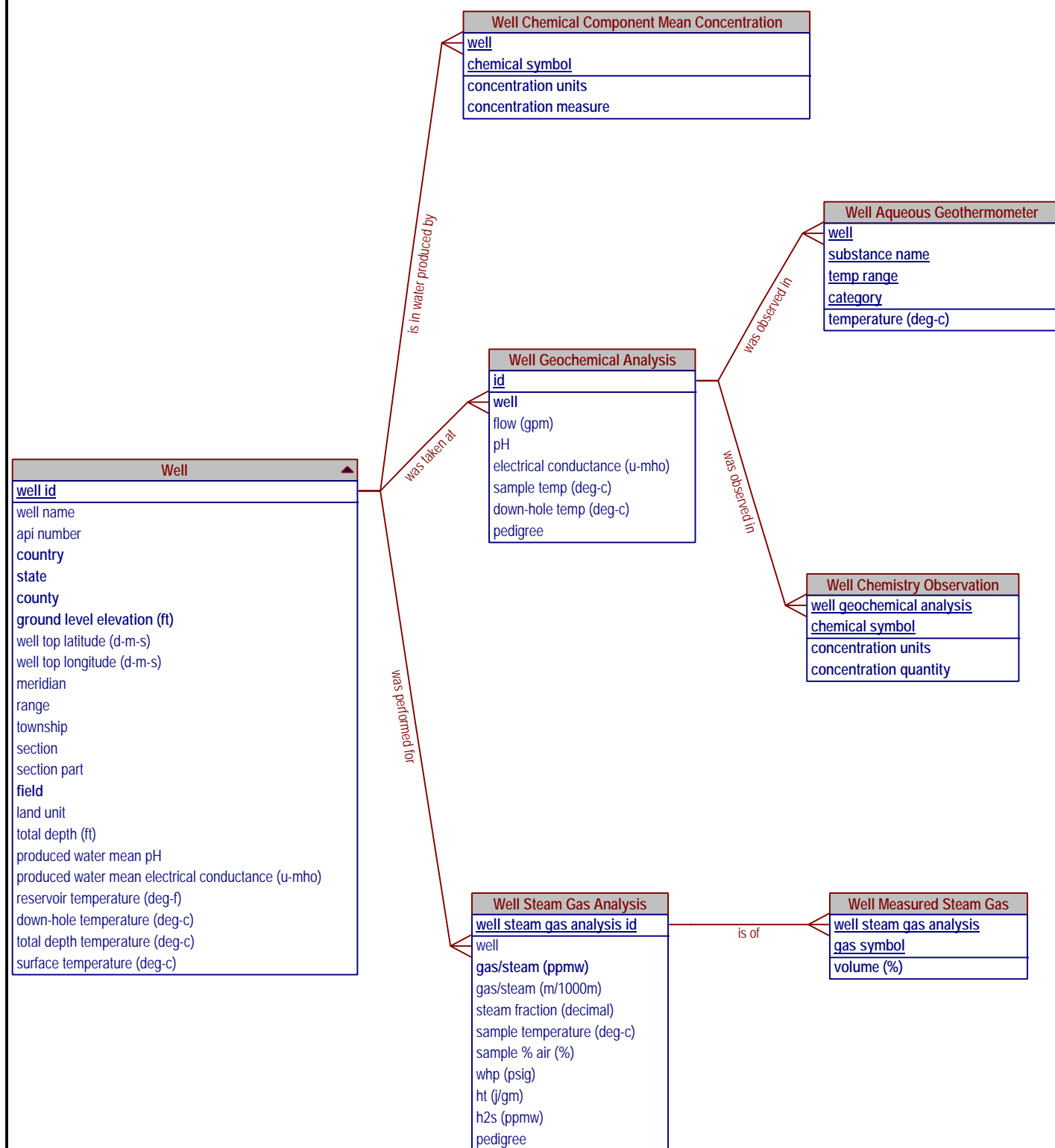
Prepared by:

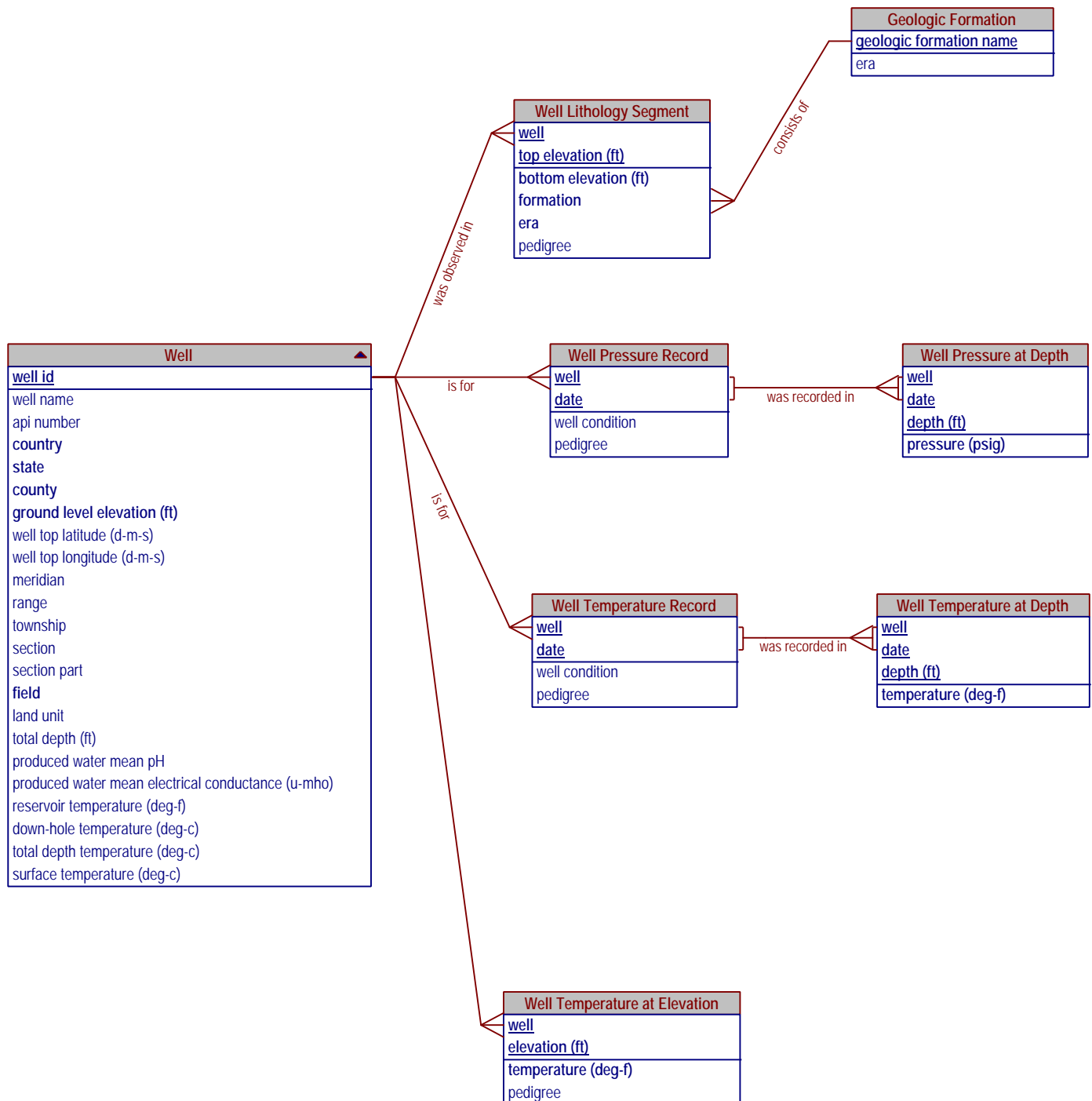
David Cuyler  
Geothermal Technologies Program  
Office of Energy Efficiency and Renewable Energy  
U.S. DOE

david.cuyler@ee.doe.gov  
202-586-2054

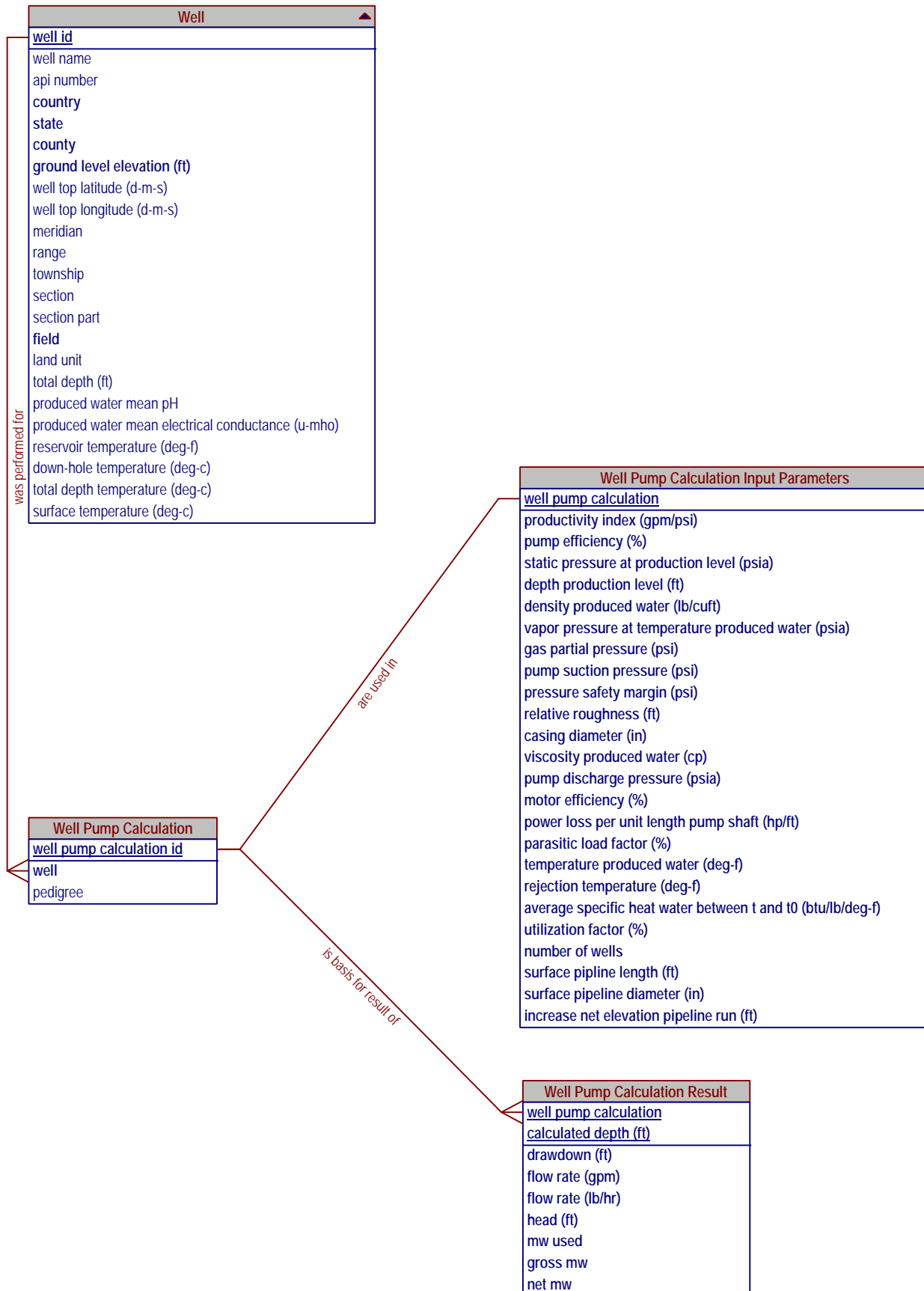


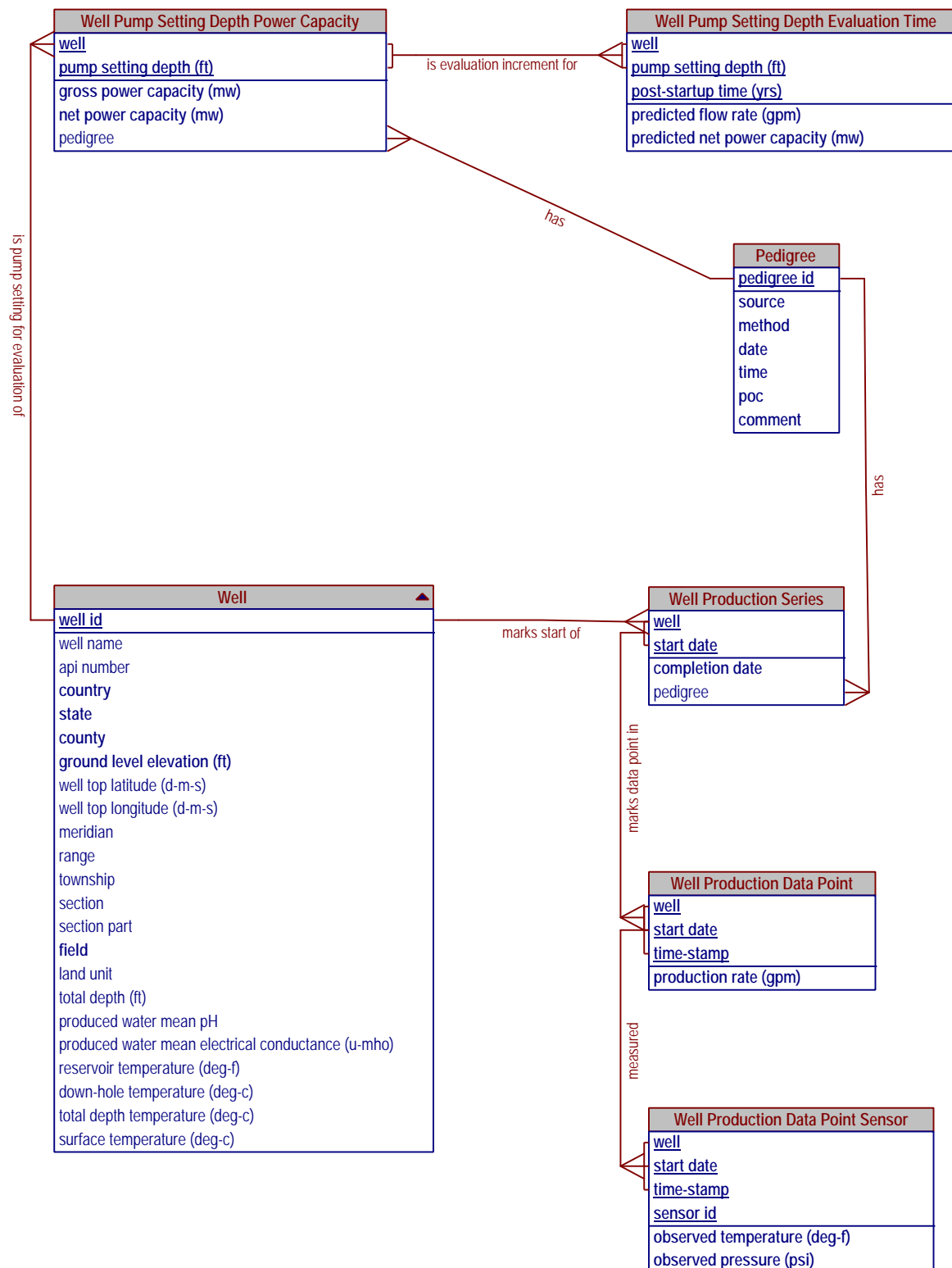






"Well Temperature at Elevation" and "Well Temperature at Depth" are redundant to some extent. The former is from the 2002 report and has low resolution; the latter is from the 2004 report and has considerably higher resolution and likely is of higher fidelity.





Note: figures 1.16, 2.1, 3.5-3.14, 3.23 (2004) have not been modeled - relevance needs to be understood.