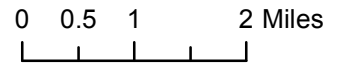
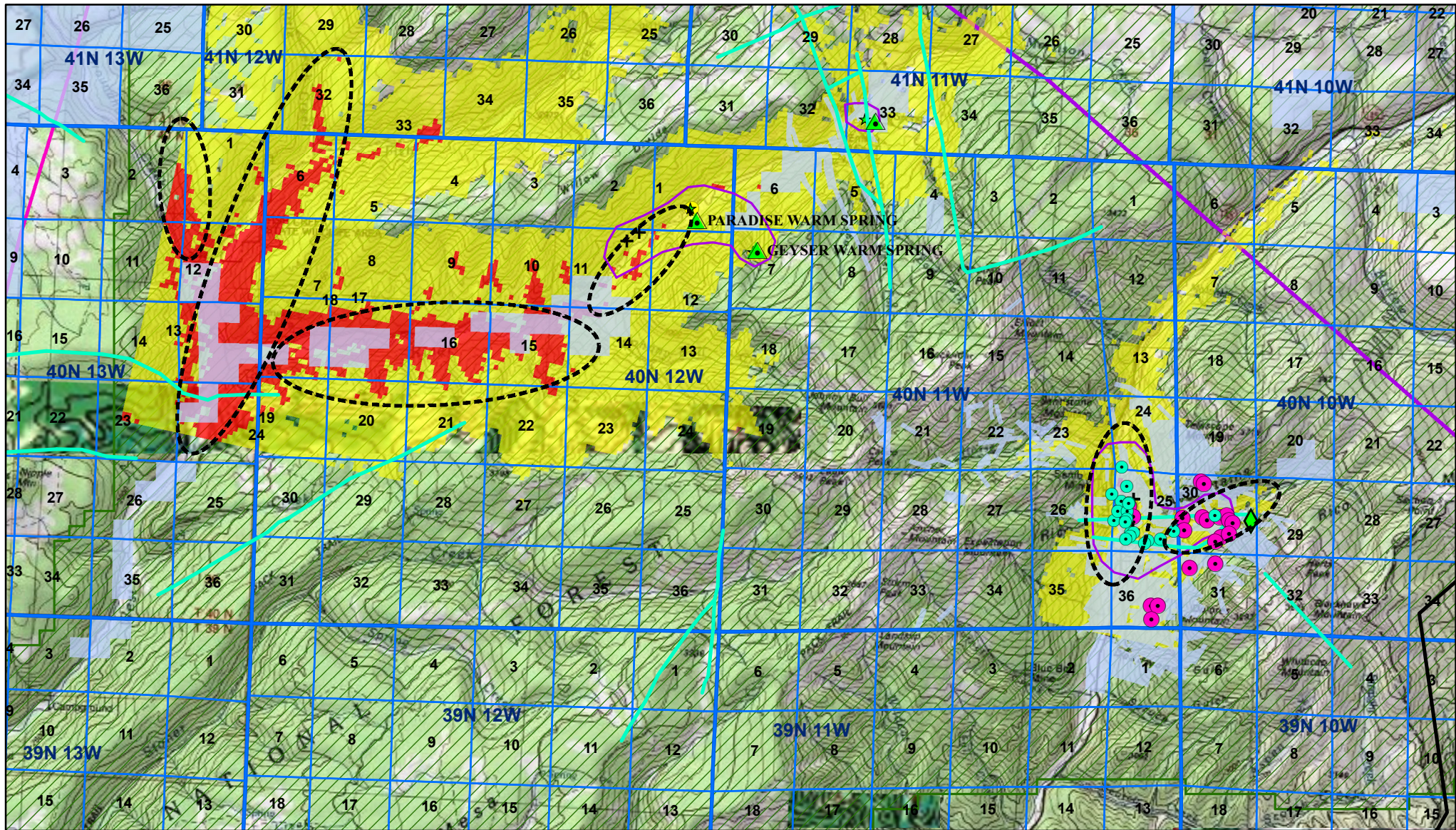


# Surface Temperature Anomalies derived from Night Time ASTER Data Corrected for Solar and Topographic Effects (dotted ellipses are anomalous areas), Dolores County



## Modeled Surface Temperature

- |                                       |                |                      |              |                   |
|---------------------------------------|----------------|----------------------|--------------|-------------------|
| Very Warm Modeled Surface Temperature | Surface Survey | 2m Survey            | Young Faults | Transmission Grid |
| Warm Modeled Surface Temperature      | Hot Wells      | IHFC Heat Flow Point | Faults       | Structural Data   |