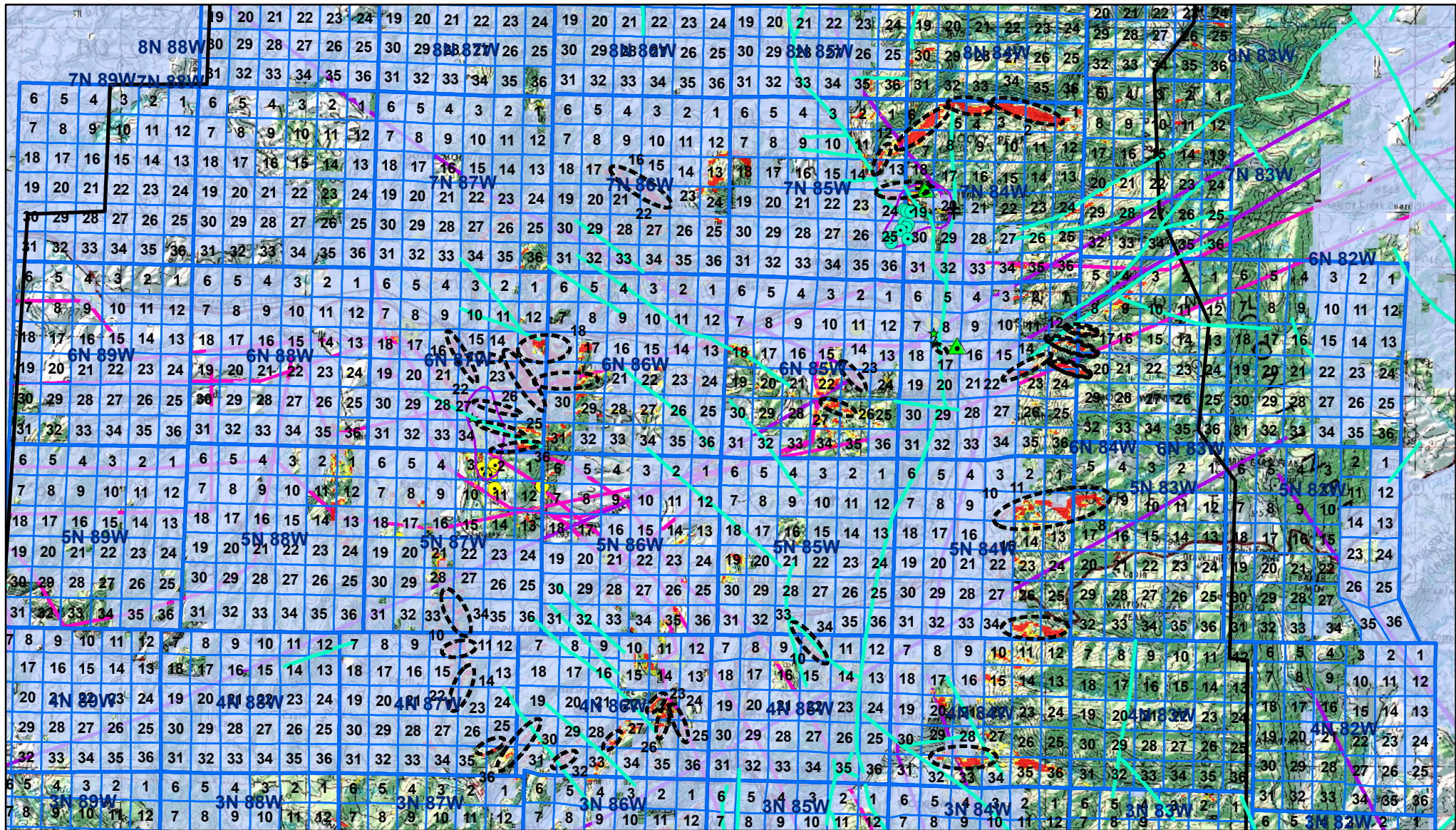


Surface Temperature Anomalies derived from Night Time ASTER Data Corrected for Solar and Topographic Effects (dotted ellipses are anomalous areas), Routt County



Modeled Surface Temperature

- Very Warm Modeled Surface Temperature
- Surface Survey
- Warm Modeled Surface Temperature
- Favorable Geochemistry
- 2m Survey
- IHFC Heat Flow Point
- Young Faults
- Transmission Grid
- Faults
- + Structural Data