


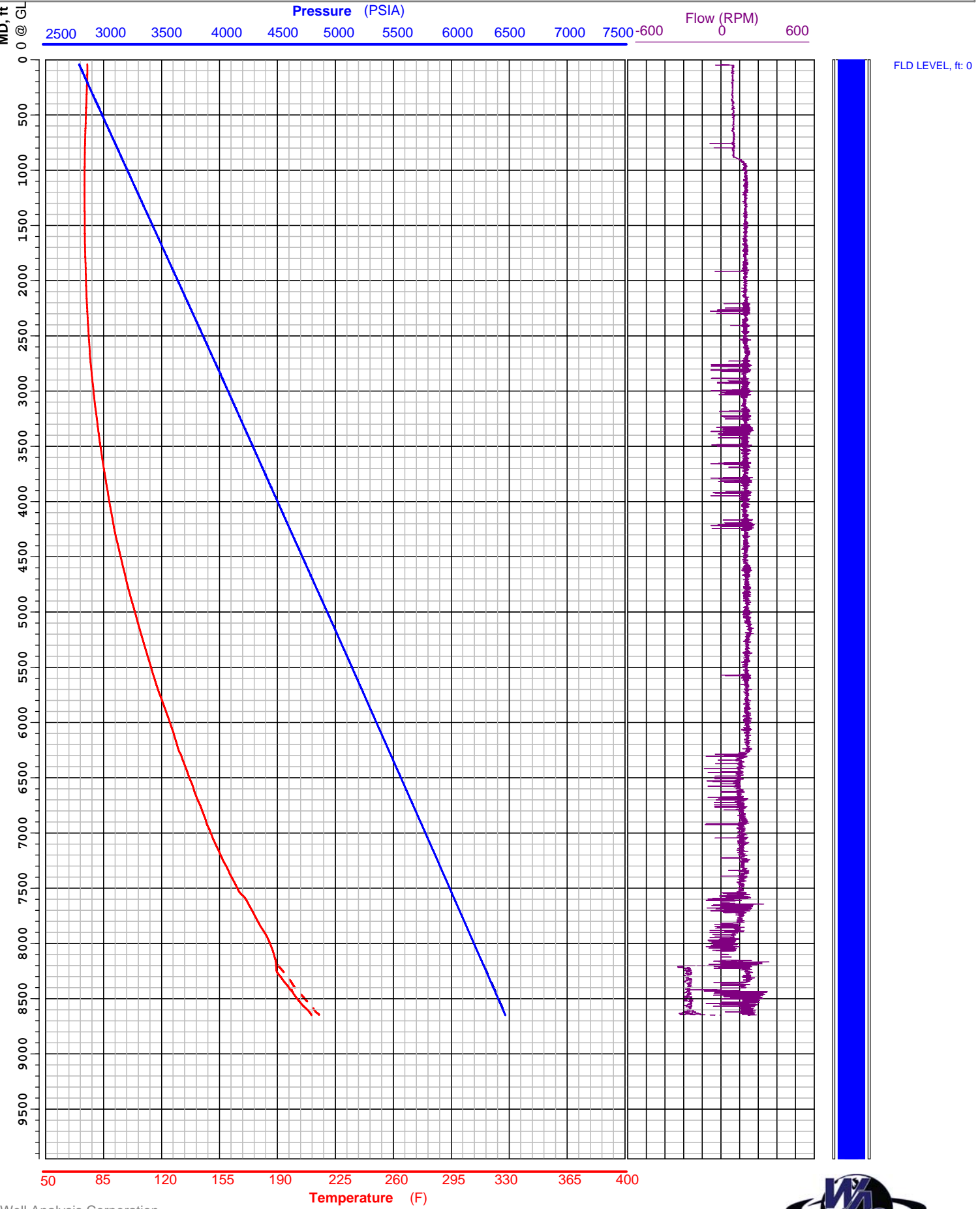
# Pressure, Temperature, Spinner Survey

**WELL: NWG 55-29**    **COMPANY: AltaRock Energy**  
**API#: -**    **FIELD: NWG**  
**DATE: 11/17/2014**    **STATE: OR**

FLUID LEVEL, ft: 0  
 TOTAL DEPTH, ft: N/A  
 LOGGED DEPTH, ft: 8652  
 GDA, ft: 9951  
 TBG, psia: 2792  
 CSG, psia: N/A  
 COMPILED BY: cGIS  
 RAN BY: L. Wiebenga

0 @ RF, ft: \_\_\_  
 RIH START: 11:10  
 ON BOTTOM: 12:23  
 POOH END: 12:27  
 STATUS: Injecting  
 GAUGE: 71  
 COMMENTS: \_\_\_\_\_

**Press**    **RIH**    **POOH**  
**Temp**    **RIH**    **POOH**  
**Spinner**    **RIH**    **POOH**  
**Perfs**    




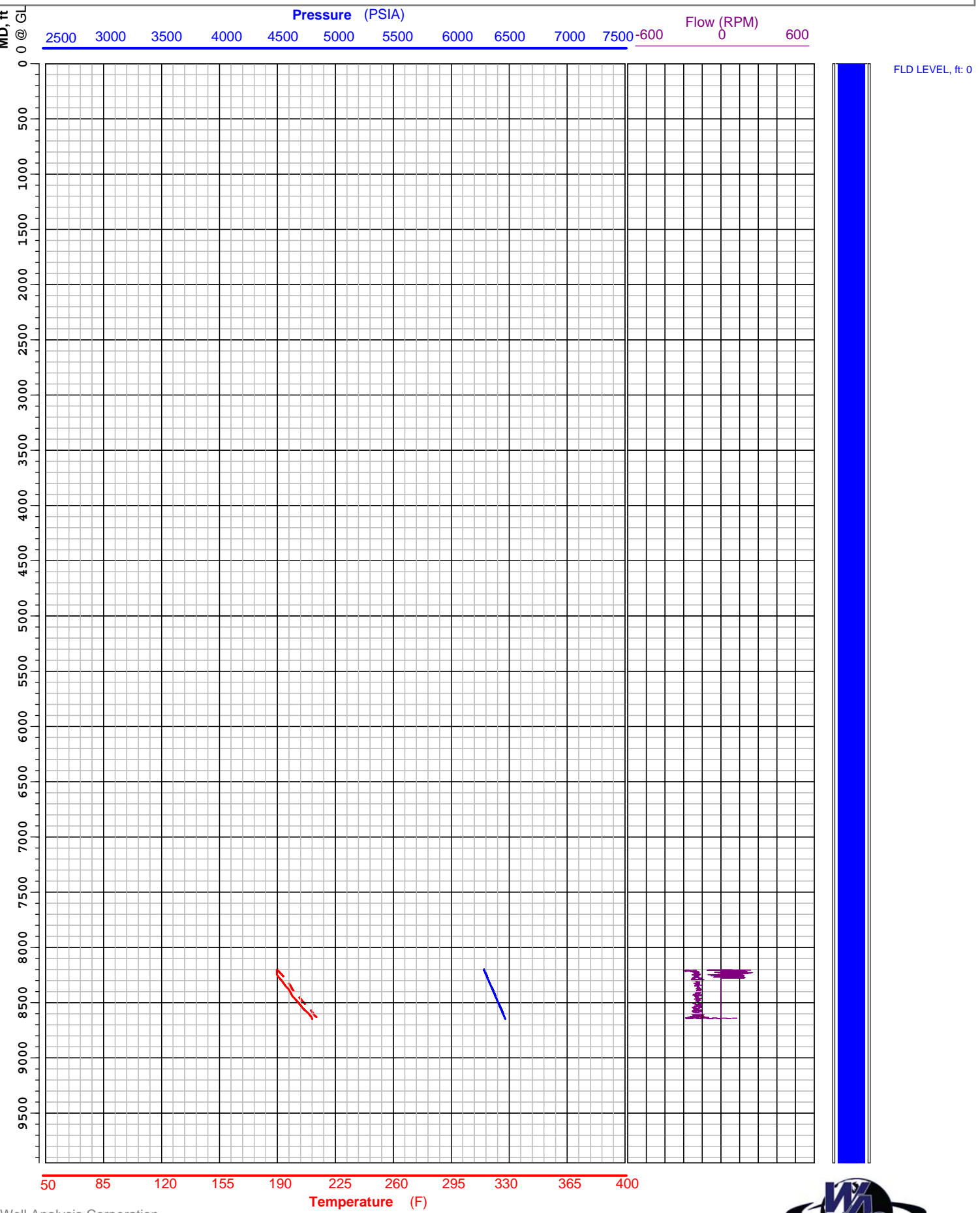
# Pressure, Temperature, Spinner Survey

**WELL: NWG 55-29**    **COMPANY: AltaRock Energy**  
**API#: -**    **FIELD: NWG**  
**DATE: 11/17/2014**    **STATE: OR**

FLUID LEVEL, ft: 0  
 TOTAL DEPTH, ft: N/A  
 LOGGED DEPTH, ft: 8652  
 GDA, ft: 9951  
 TBG, psia: 2792  
 CSG, psia: N/A  
 COMPILED BY: cGIS  
 RAN BY: L. Wiebenga

0 @ RF, ft: \_\_\_  
 RIH START: 12:28  
 ON BOTTOM: 12:32  
 POOH END: 12:38  
 STATUS: Injecting  
 GAUGE: 71  
 COMMENTS: \_\_\_\_\_

**Press**    **RIH**    **POOH**  
**Temp**    **RIH**    **POOH**  
**Spinner**    **RIH**    **POOH**  
**Perfs**    




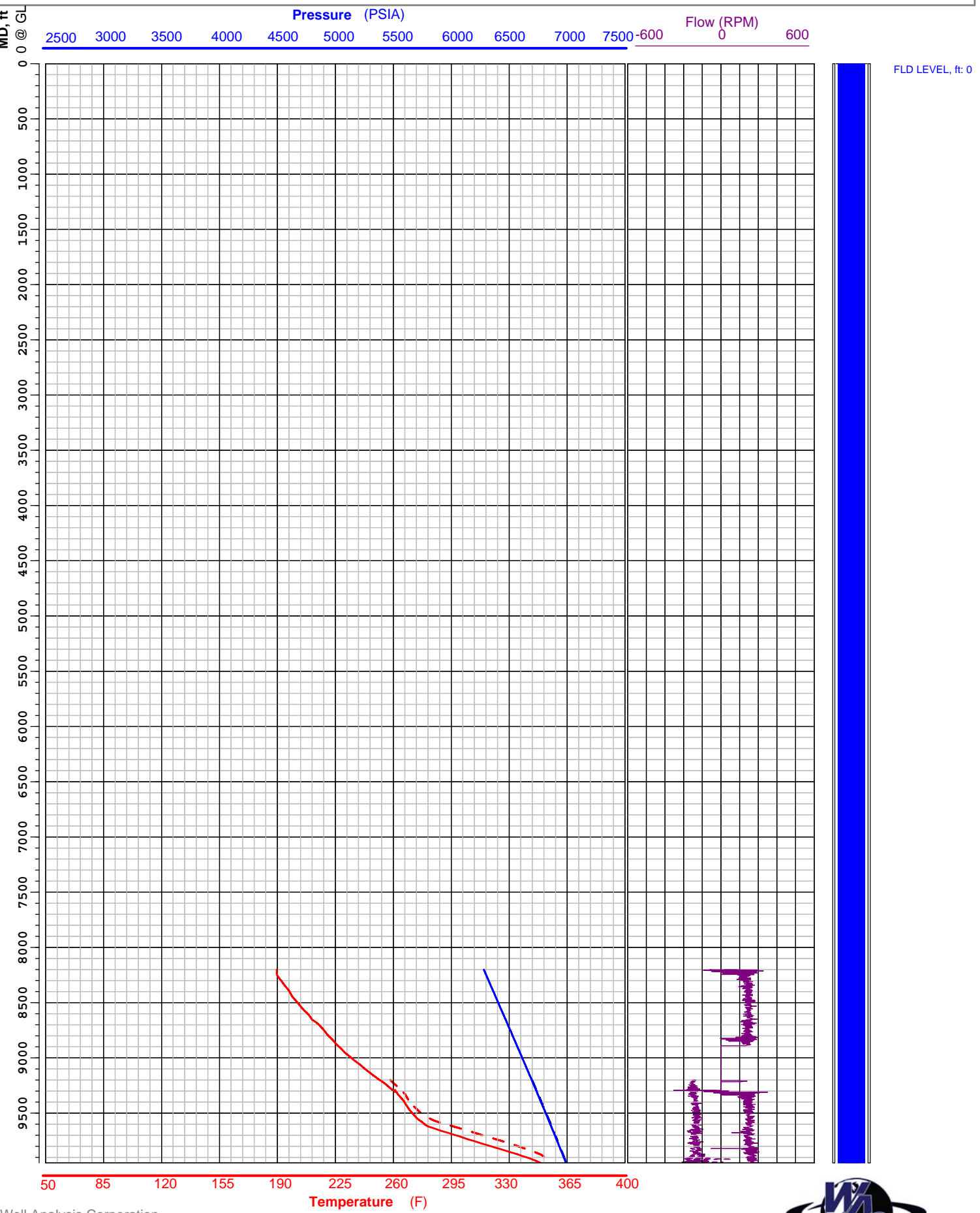
# Pressure, Temperature, Spinner Survey

**WELL: NWG 55-29**    **COMPANY: AltaRock Energy**  
**API#: -**    **FIELD: NWG**  
**DATE: 11/17/2014**    **STATE: OR**

FLUID LEVEL, ft: 0  
 TOTAL DEPTH, ft: N/A  
 LOGGED DEPTH, ft: 8652  
 GDA, ft: 9951  
 TBG, psia: 2792  
 CSG, psia: N/A  
 COMPILED BY: cGIS  
 RAN BY: L. Wiebenga

0 @ RF, ft: \_\_\_  
 RIH START: 12:40  
 ON BOTTOM: 12:52  
 POOH END: 13:01  
 STATUS: Injecting  
 GAUGE: 71  
 COMMENTS: \_\_\_\_\_


**Press**    **RIH**    **POOH**  
**Temp**    **RIH**    **POOH**  
**Spinner**    **RIH**    **POOH**  
**Perfs**    

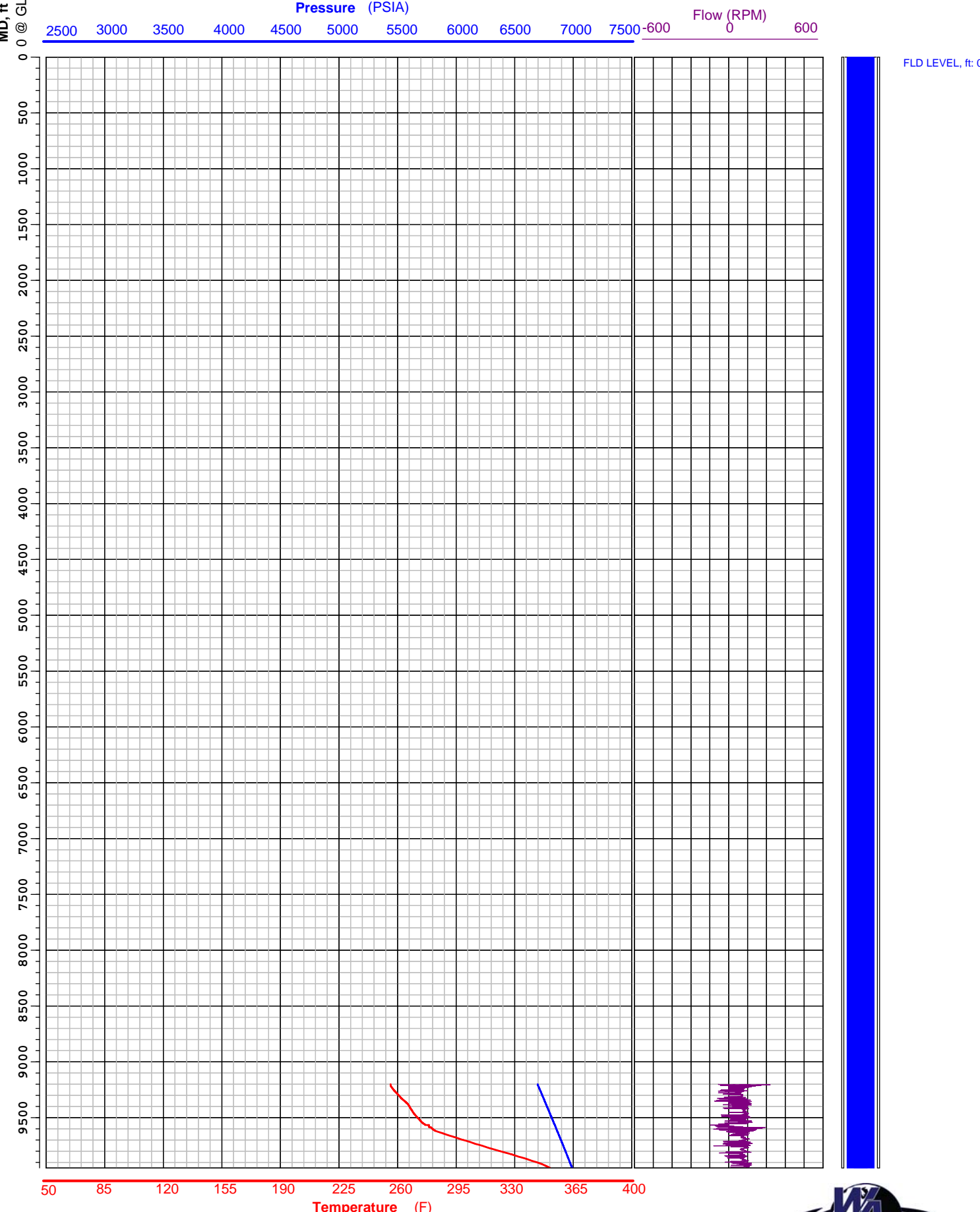


# Pressure, Temperature, Spinner Survey

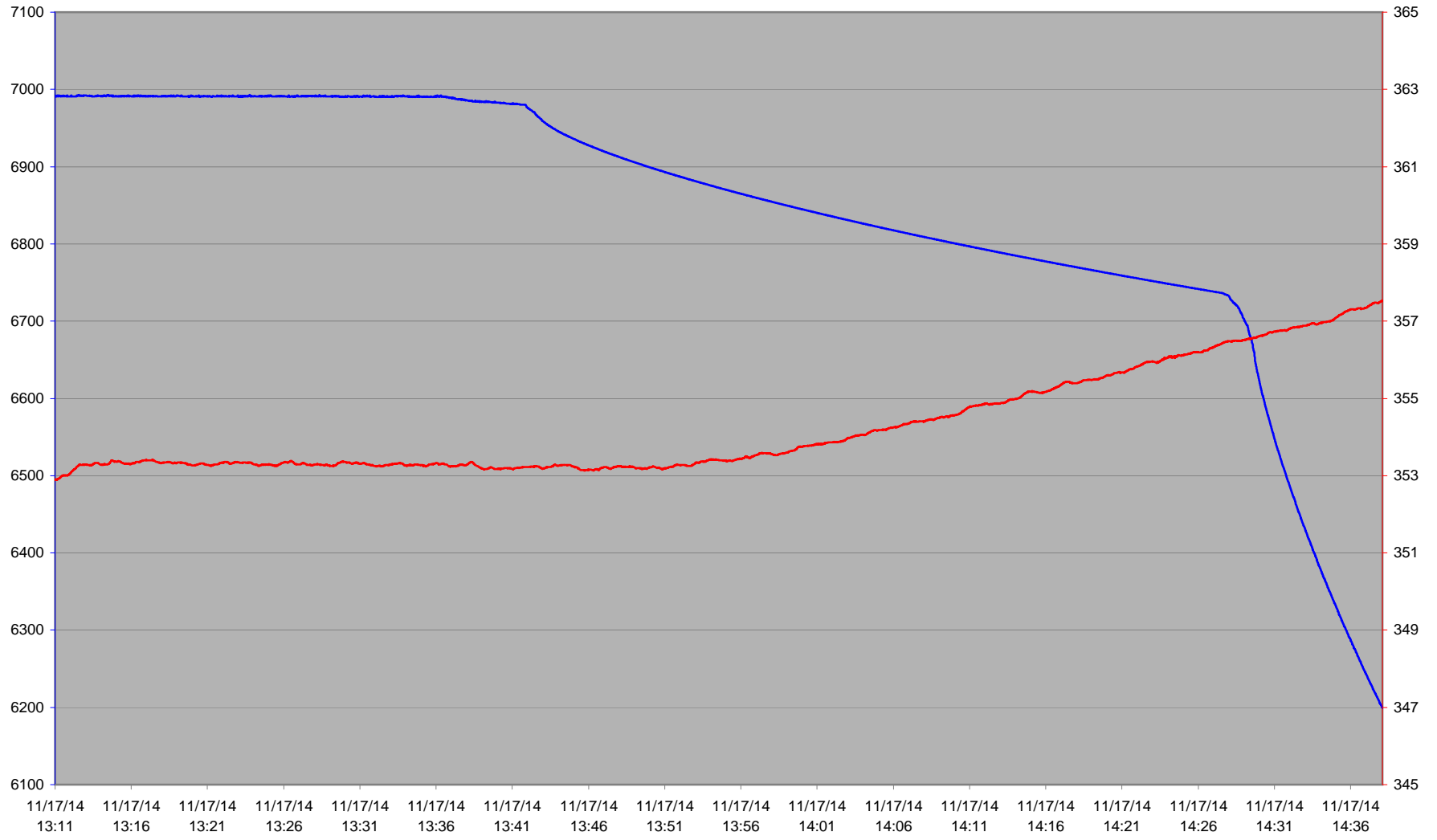
**WELL: NWG 55-29**    **COMPANY: AltaRock Energy**  
**API#: -**    **FIELD: NWG**  
**DATE: 11/17/2014**    **STATE: OR**

FLUID LEVEL, ft: 0    0 @ RF, ft: \_\_\_\_  
TOTAL DEPTH, ft: N/A    RIH START: 13:02  
LOGGED DEPTH, ft: 8652    ON BOTTOM: 13:10  
GDA, ft: 9951    POOH END: \_\_\_\_  
TBG, psia: 2792    STATUS: Injecting  
CSG, psia: N/A    GAUGE: 71  
COMPILED BY: cGIS    COMMENTS: \_\_\_\_  
RAN BY: L. Wiebenga

**Press**    RIH    POOH  
**Temp**                      
**Spinner**                      
**Perfs**    



### NWG 55-29 @ 9950' Injecting



— Press, psia — Temp, F




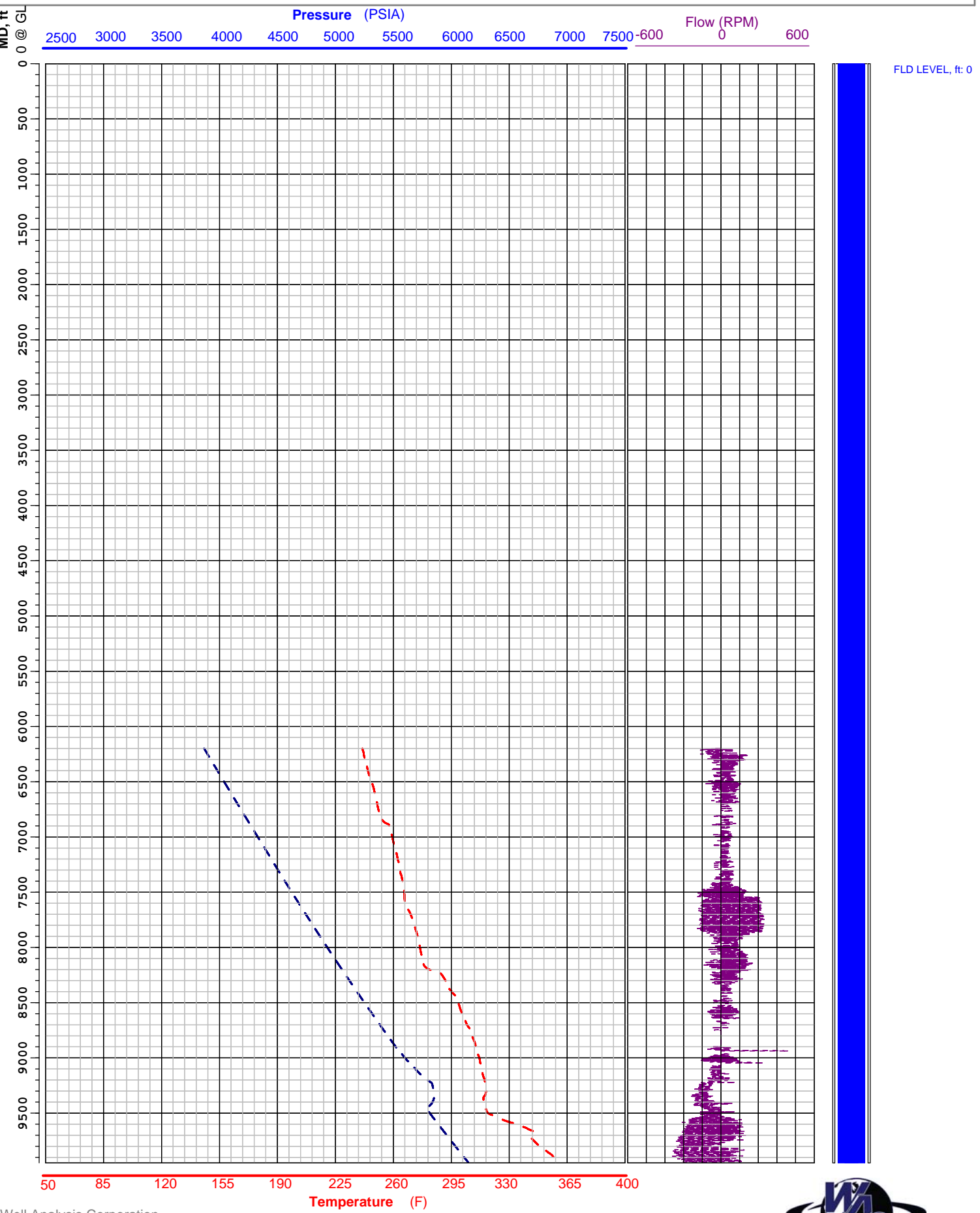
# Pressure, Temperature, Spinner Survey

**WELL: NWG 55-29**    **COMPANY: AltaRock Energy**  
**API#: -**    **FIELD: NWG**  
**DATE: 11/17/2014**    **STATE: OR**

FLUID LEVEL, ft: 0  
 TOTAL DEPTH, ft: N/A  
 LOGGED DEPTH, ft: 8652  
 GDA, ft: 9951  
 TBG, psia: 2792  
 CSG, psia: N/A  
 COMPILED BY: cGIS  
 RAN BY: L. Wiebenga

0 @ RF, ft: \_\_\_  
 RIH START: \_\_\_  
 ON BOTTOM: 14:38  
 POOH END: 15:17  
 STATUS: Flowing  
 GAUGE: 71  
 COMMENTS: \_\_\_

**Press**    **RIH**    **POOH**  
**Temp**    **---**    **---**  
**Spinner**    **---**    **---**  
**Perfs**    



# Pressure, Temperature, Spinner Survey

**WELL: NWG 55-29**    **COMPANY: AltaRock Energy**  
**API#: -**    **FIELD: NWG**  
**DATE: 11/17/2014**    **STATE: OR**

FLUID LEVEL, ft: 0  
 TOTAL DEPTH, ft: N/A  
 LOGGED DEPTH, ft: 8652  
 GDA, ft: 9951  
 TBG, psia: 2792  
 CSG, psia: N/A  
 COMPILED BY: cGIS  
 RAN BY: L. Wiebenga

0 @ RF, ft: \_\_\_\_  
 RIH START: 15:19  
 ON BOTTOM: 15:36  
 POOH END: 15:50  
 STATUS: Flowing  
 GAUGE: 71  
 COMMENTS: \_\_\_\_\_

**Press**    **RIH**    **POOH**  
**Temp**    \_\_\_\_\_  
**Spinner**    \_\_\_\_\_  
**Perfs**    