


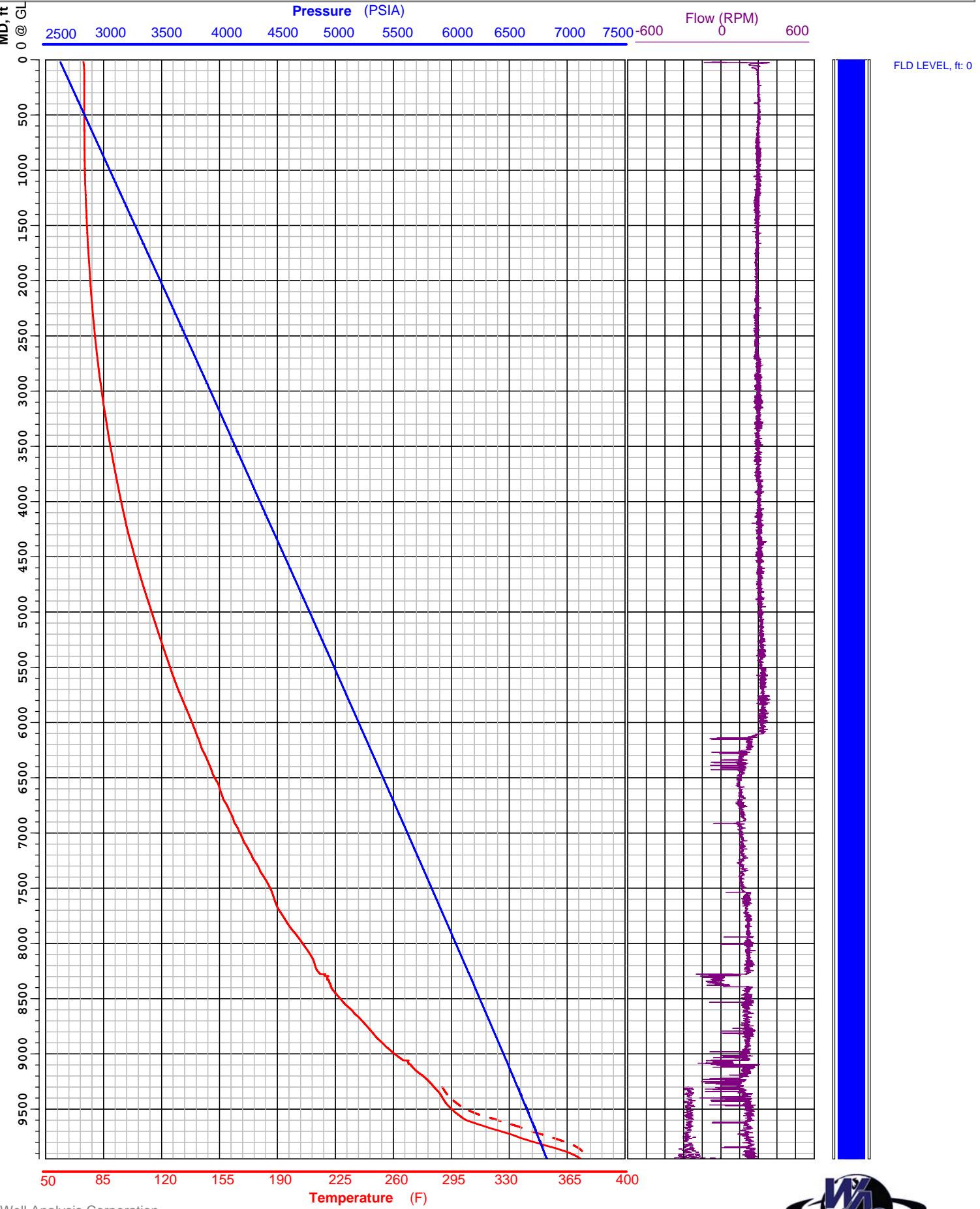
Pressure, Temperature, Spinner Survey

WELL: NWG 55-29 **COMPANY: AltaRock Energy**
API#: - **FIELD: NWG**
DATE: 11/18/2014 **STATE: OR**

FLUID LEVEL, ft: 0
 TOTAL DEPTH, ft: N/A
 LOGGED DEPTH, ft: 9950
 GDA, ft: 9951
 TBG, psia: 2627
 CSG, psia: N/A
 COMPILED BY: cGIS
 RAN BY: L. Wiebenga

0 @ RF, ft: ___
 RIH START: ___
 ON BOTTOM: 18:19
 POOH END: 18:26
 STATUS: Injecting
 GAUGE: 71
 COMMENTS: ___

Press **RIH** **POOH**
Temp **---** **---**
Spinner **---** **---**
Perfs 




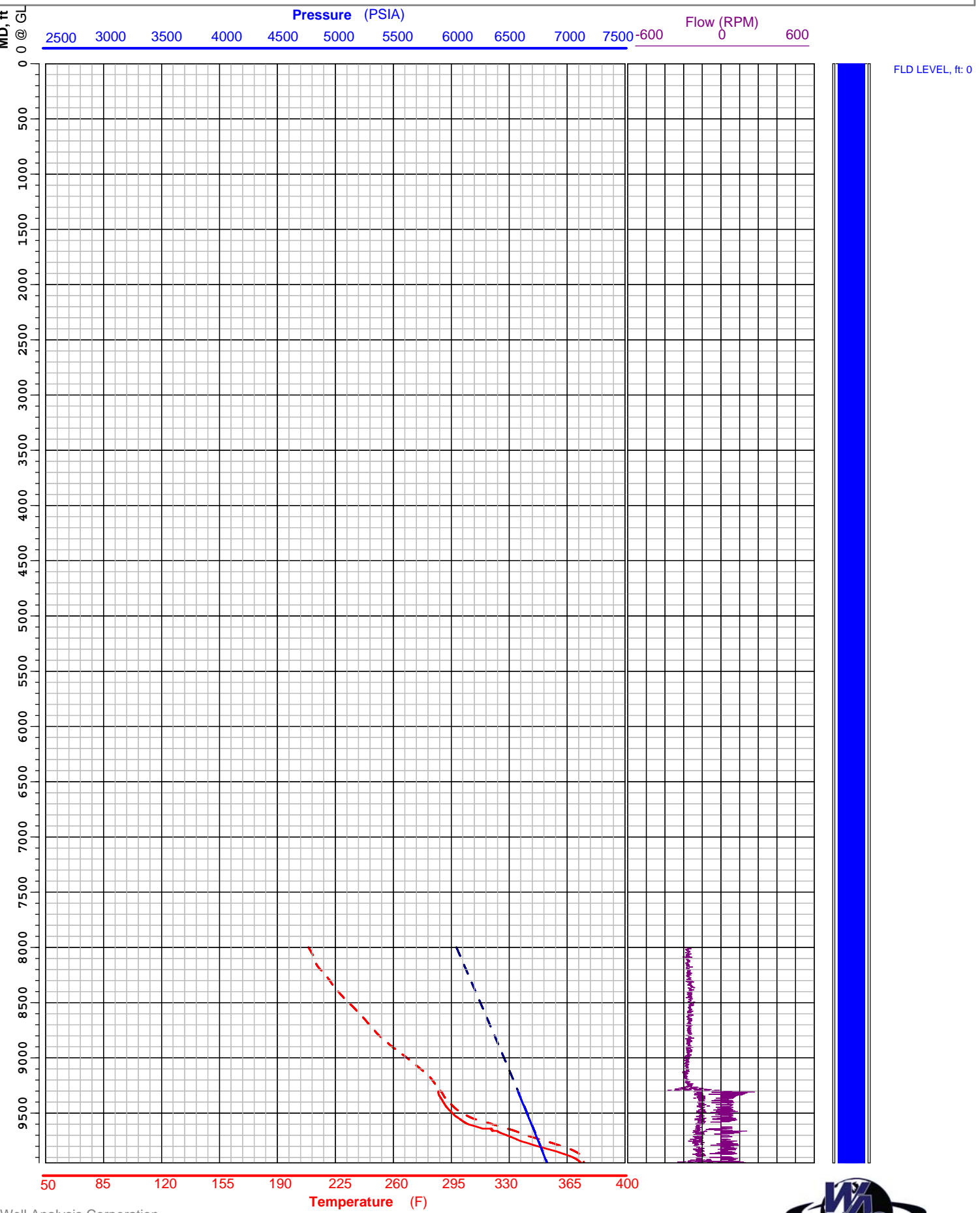
Pressure, Temperature, Spinner Survey

WELL: NWG 55-29 **COMPANY: AltaRock Energy**
API#: - **FIELD: NWG**
DATE: 11/18/2014 **STATE: OR**

FLUID LEVEL, ft: 0
 TOTAL DEPTH, ft: N/A
 LOGGED DEPTH, ft: 9950
 GDA, ft: 9951
 TBG, psia: 2627
 CSG, psia: N/A
 COMPILED BY: cGIS
 RAN BY: L. Wiebenga

0 @ RF, ft: ___
 RIH START: 18:27
 ON BOTTOM: 18:33
 POOH END: 18:40
 STATUS: Injecting
 GAUGE: 71
 COMMENTS: _____

Press **RIH** **POOH**
Temp **---** **---**
Spinner **---** **---**
Perfs 



Pressure, Temperature, Spinner Survey

WELL: NWG 55-29 **COMPANY: AltaRock Energy**
API#: - **FIELD: NWG**
DATE: 11/18/2014 **STATE: OR**

FLUID LEVEL, ft: 0
 TOTAL DEPTH, ft: N/A
 LOGGED DEPTH, ft: 9950
 GDA, ft: 9951
 TBG, psia: 2627
 CSG, psia: N/A
 COMPILED BY: cGIS
 RAN BY: L. Wiebenga

0 @ RF, ft: ____
 RIH START: 18:58
 ON BOTTOM: 19:07
 POOH END: 19:20
 STATUS: Injecting
 GAUGE: 71
 COMMENTS: _____

Press **RIH** **POOH**
Temp **RIH** **POOH**
Spinner **RIH** **POOH**
Perfs 