

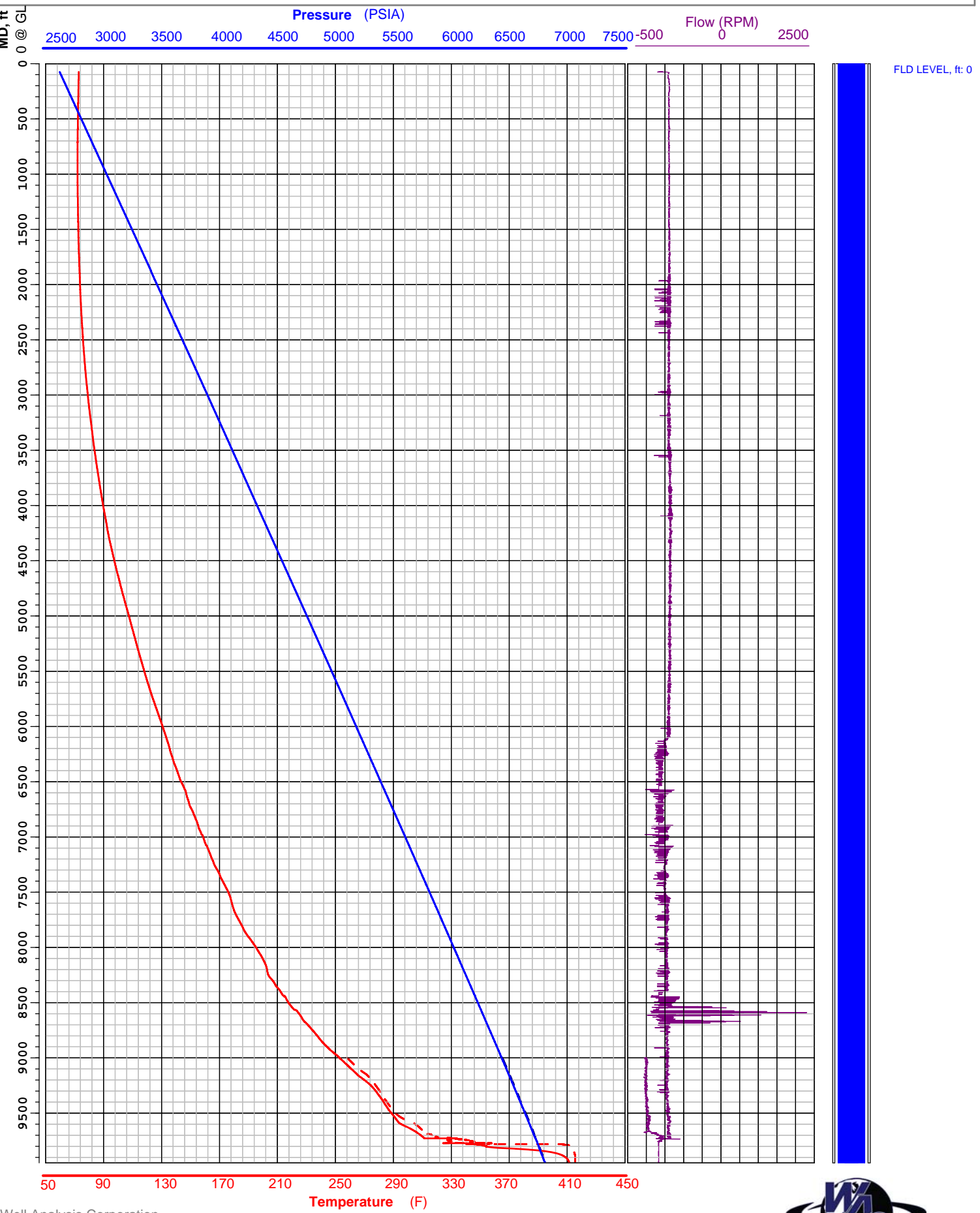
# Pressure, Temperature, Spinner Survey

**WELL: NWG 55-29**    **COMPANY: AltaRock Energy**  
**API#: -**    **FIELD: NWG**  
**DATE: 11/19/2014**    **STATE: OR**

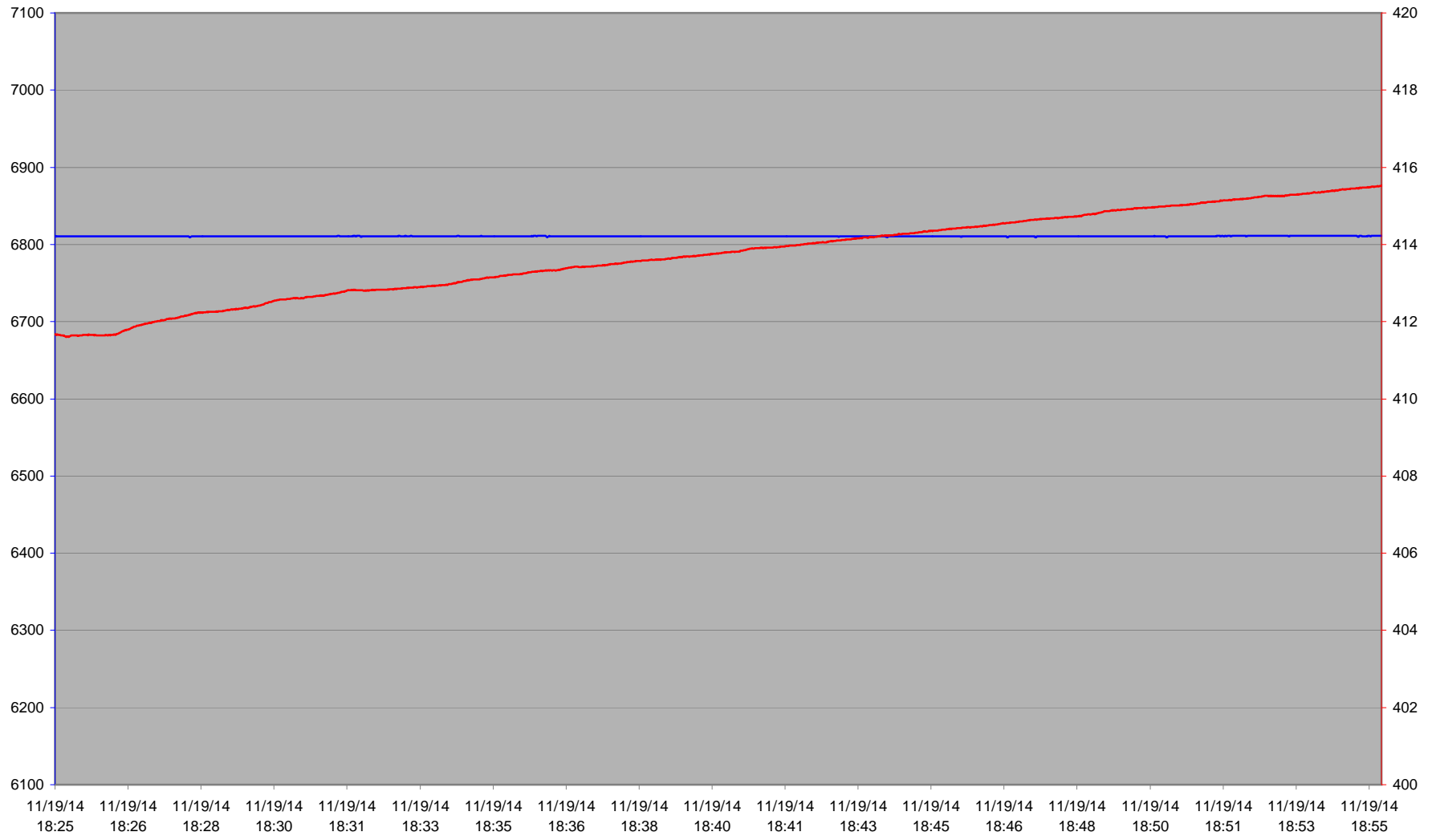
FLUID LEVEL, ft: 0  
 TOTAL DEPTH, ft: N/A  
 LOGGED DEPTH, ft: 9950  
 GDA, ft: 9951  
 TBG, psia: 2621  
 CSG, psia: N/A  
 COMPILED BY: cGIS  
 RAN BY: L. Wiebenga

0 @ RF, ft: \_\_\_  
 RIH START: \_\_\_  
 ON BOTTOM: 18:24-18:55  
 POOH END: 19:07  
 STATUS: Injecting  
 GAUGE: 71  
 COMMENTS: \_\_\_

**Press**    **RIH**    **POOH**  
**Temp**    **---**    **---**  
**Spinner**    **---**    **---**  
**Perfs**    



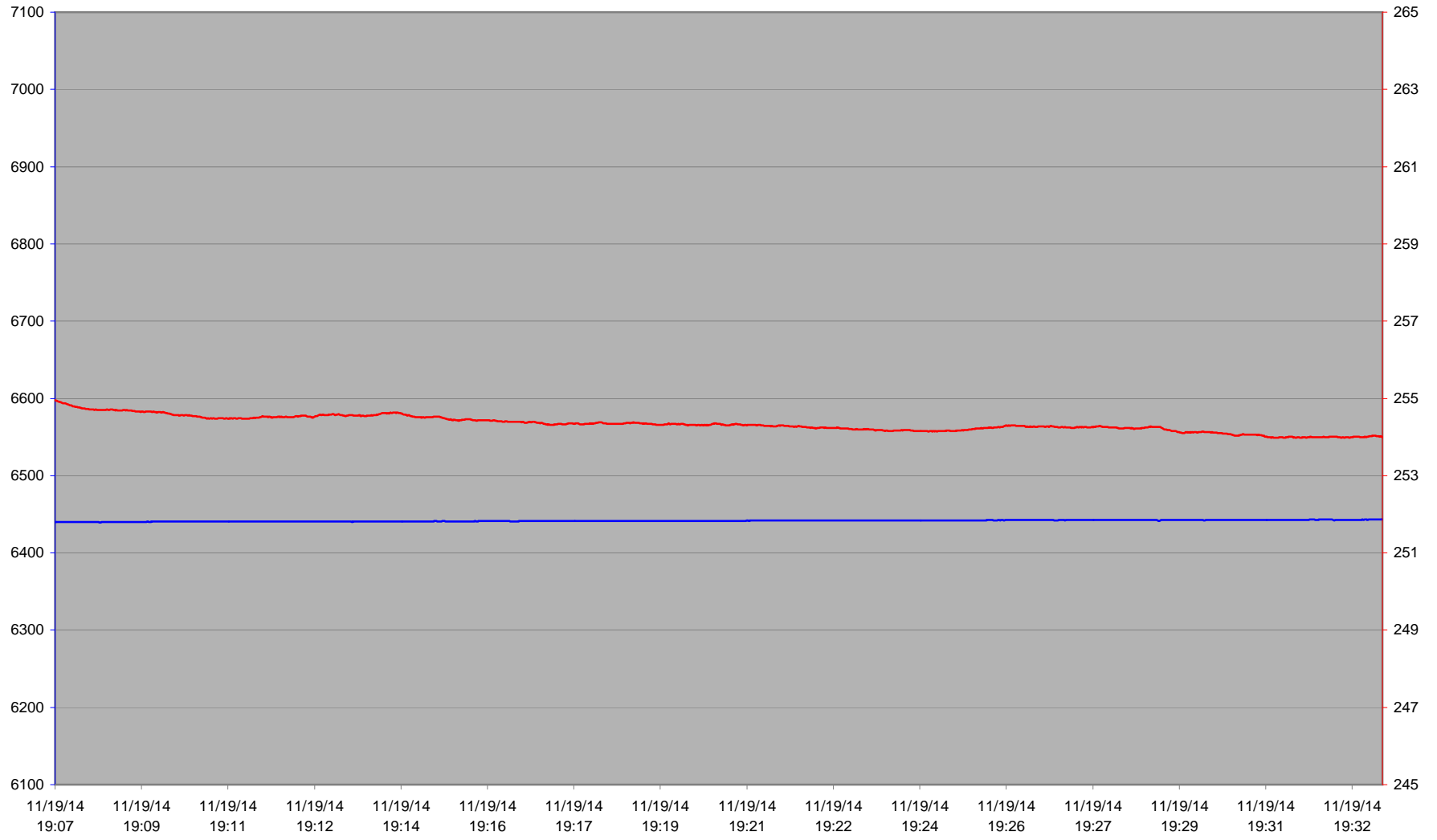
NWG 55-29 @ 9952'



— Press, psia — Temp, F



NWG 55-29 @ 9000'



— Press, psia — Temp, F



# Pressure, Temperature, Spinner Survey

**WELL: NWG 55-29**    **COMPANY: AltaRock Energy**  
**API#: -**    **FIELD: NWG**  
**DATE: 11/19/2014**    **STATE: OR**

FLUID LEVEL, ft: 0  
 TOTAL DEPTH, ft: N/A  
 LOGGED DEPTH, ft: 9950  
 GDA, ft: 9951  
 TBG, psia: 2621  
 CSG, psia: N/A  
 COMPILED BY: cGIS  
 RAN BY: L. Wiebenga

0 @ RF, ft: \_\_\_  
 RIH START: \_\_\_  
 ON BOTTOM: 19:07  
 POOH END: 20:00  
 STATUS: Injecting  
 GAUGE: 71  
 COMMENTS: \_\_\_\_\_

**Press**    **RIH**    **POOH**  
**Temp**    **---**    **---**  
**Spinner**    **---**    **---**  
**Perfs**    