

**BAKER  
HUGHES**

**LOGS**  
BOREHOLE PROFILE LOG

**Baker Atlas**

FILE NO: 15368 COMPANY: GRADIENT RESOURCES, INC.  
APN NO: 27-001-80440 WELL: 13-36  
FIELD: FALLON 1  
COUNTY: CHURCHILL STATE: NEVADA

Ver. 3.87 LOCATION: 354742 E 4390820 N MDM  
UTM NAD 83 ZONE 11N

OTHER SERVICES  
DISBUR  
XUAC  
TEMP  
HDL/ZDL/CM  
GYRO

PERMANENT DATUM LOG MEASURED FROM G.L. ELEVATION 3920 FT  
K.B. 5 FT ABOVE P.D.  
DRILL MEAS. FROM K.B.

ELEVATIONS:  
KB 3920 FT  
DF 3923 FT  
OL 3920 FT

DATE	13-NOV-2010
RUN	TRIP
SERVICE ORDER	1 2
DEPTH DRILLER	3827 FT
DEPTH LOGGER	3823 FT
BOTTOM LOGGED INTERVAL	3823 FT
TOP LOGGED INTERVAL	730 FT
CASING DRILLER	7 IN
CASING LOGGER	730 FT
BT SIZE	8.125 IN
TYPE OF FLUID IN HOLE	GEL BASED
DENSITY	8.5 LB/G
PH	11
SOURCE OF SAMPLE	MUD TANK
RM AT MEAS. TEMP.	1.62 CHM
RMF AT MEAS. TEMP.	1.30 CHM
RAG AT MEAS. TEMP.	2.28 CHM
SOURCE OF RIF	MEASURED
RM AT BHT	0.52 CHM
TIME SINCE CIRCULATION	14 HOURS
MAX. RECORDED TEMP.	180 DEGF
EQUIP. NO.	ML 4232
RECORDED BY	M. GASTIN
WITNESSED BY	N. PETERSON

IN MAKING INTERPRETATIONS OF LOGS OUR EMPLOYEES WILL GIVE CUSTOMER THE BENEFIT OF THEIR BEST JUDGEMENT. BUT SINCE ALL INTERPRETATIONS ARE OPINIONS BASED ON INFERENCES FROM ELECTRICAL OR OTHER MEASUREMENTS, WE CANNOT, AND WE DO NOT GUARANTEE THE ACCURACY OR CORRECTNESS OF ANY INTERPRETATION. WE SHALL NOT BE LIABLE OR RESPONSIBLE FOR ANY LOSS, COST, DAMAGES, OR EXPENSES WHATSOEVER INCURRED OR SUSTAINED BY THE CUSTOMER RESULTING FROM ANY INTERPRETATION MADE BY ANY OF OUR EMPLOYEES.

# REMARKS

RUN 1 TRIP 2: GYRODATA GYRO WAS HOISTED ON RUN 1 TRIP 1

BOVOL AND CVOL IN CUBIC FEET  
CVOL COMPUTED USING 3.5" CASING  
CALIPER VERIFIED IN CASING

WELL WAS LAST CIRCULATED ON 11/12/10 AT 16:30, REACHED BOTTOM ON 11/13/10 AT 6:00, STARTED RECORDING MAIN PASS AT 6:45

MAX TEMP THERMOMETER RANGE 100 TO 400 DEG F READ: 180 DEG F  
MAX TEMP THERMOMETER RANGE 100 TO 400 DEG F READ: 181 DEG F

THANK YOU FOR CHOOSING BAKER ATLAS...THE BEST CHOICE!!!  
CREW: KERN AND WILLIS  
RIG: WELSCD #7

# EQUIPMENT DATA

RUN	TRIP	TOOL	SERIES NO.	SERIAL NO.	POSITION
1	2	SNVL	3844KD	10332207	SNVFI
1	2	TIRM	3881KB	10217218	FREE
1	2	WTS	3514KB	368782	FREE
1	2	DSL	1328KB	10203001	FREE
1	2	CN	2446XA	10202048	FREE
1	2	ZDL	2234XA	173878	PAD / DE-CENTRALIZED
1	2	KNUT	3638XA	10143809	DOUBLE KNUCKLE
1	2	HDL	1515EA/MA	10340485/10089832	0.7" STUCK-OFF
1	2	CENT	4341XA	10500017	CENTRALIZED
1	2	GRIT	4401XB	10089288	CENTRALIZED
1	2	AC ELEC.	1677EA	10366234	CENTRALIZED
1	2	AC REC.	1678MC	10338528	CENTRALIZED
1	2	AC ISO.	1678PB	10200307	CENTRALIZED
1	2	AC TRANS.	1678QA	10108348	CENTRALIZED
1	2	AC PWR.	1678FA	370675	CENTRALIZED
1	2	CENT	4341XA	10238054	CENTRALIZED
1	2	SLAM	3516XA	72848	CENTRALIZED
1	2	TEMP	2806XA	77803	CENTRALIZED

## BOREHOLE PROFILE LOG

ECLIPS 6.11 Aug 06, 2010

Sat Nov 13 10:33:45 2010

Perplot /main/62

Cplot

Plot\_Cpp /main/16

Fileview 5.50

### PARAMETER AND FILTER SUMMARY REPORT

FILE: /data/15358/w7711208.prm  
 LOGGING MODE: DEPTH DIRECTION: UP  
 TOP DEPTH: 722.000 ft BOTTOM DEPTH: 3528.843 ft

### SYMMETRIC FILTER

MEASUREMENT TYPE	PARAMETER	VALUE	UNITS	INTERVAL (ft)	
Y AXIS CALIPER	FILTER ( )	medium (1)		TOP	BOTTOM
TENSION	FILTER ( )	medium (1)		"	"
GR	FILTER ( )	medium (1)		"	"
CALIPER	FILTER ( )	medium (1)		"	"
	FILTER (.h)	medium (1)		"	"
	FILTER (.l)	medium (1)		"	"
SP-SPDH	FILTER ( )	medium (1)		"	"

### BOREHOLE & CEMENT

MEASUREMENT TYPE	PARAMETER	VALUE	UNITS	INTERVAL (ft)	
CASING - BOREHOLE & CEMENT VOLUME	CASING O.D.	3.500	1n	TOP	BOTTOM
BIT SIZE	BIT SIZE	6.125	1n	"	"

### CURVE DESCRIPTION REPORT

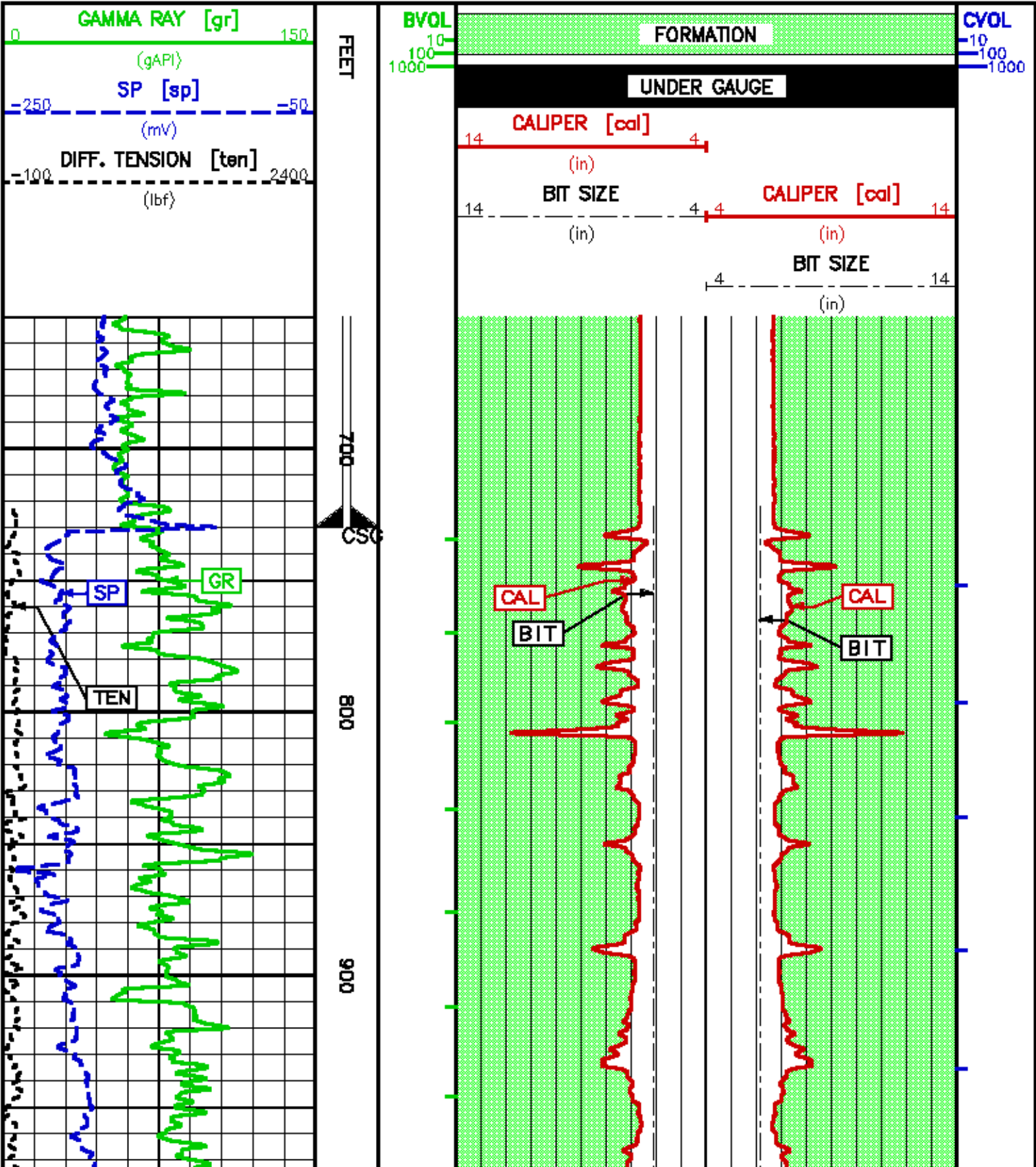
CURVE NAME	CREATION DATE	CURVE DESCRIPTION
F1:BIT	Nov 13 06:52:20 2010	BIT SIZE
F1:BVOL	Nov 13 06:52:20 2010	BOREHOLE VOLUME
F1:CAL	Nov 13 06:52:20 2010	CALIPER
F1:CVOL	Nov 13 06:52:20 2010	CEMENT VOLUME
F1:GR	Nov 13 06:52:20 2010	GAMMA RAY
F1:SP	Nov 13 06:52:20 2010	SPONTANEOUS POTENTIAL
F1:TEN	Nov 13 06:52:20 2010	DIFFERENTIAL TENSION

### CURVE MEASURE POINT OFFSET

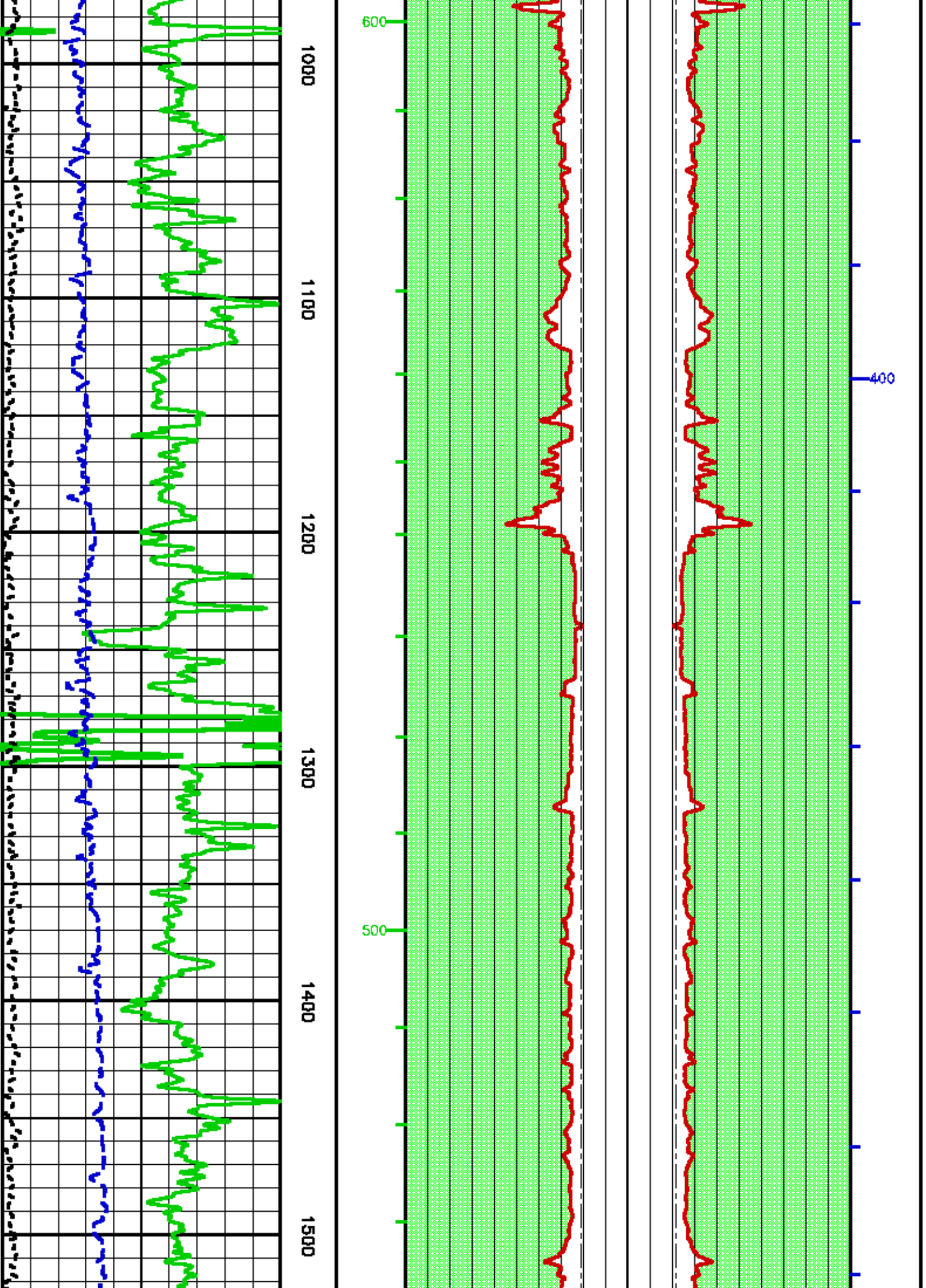
CURVE	OFFSET (ft)	CURVE	OFFSET (ft)	CURVE	OFFSET (ft)	CURVE	OFFSET (ft)
-------	-------------	-------	-------------	-------	-------------	-------	-------------

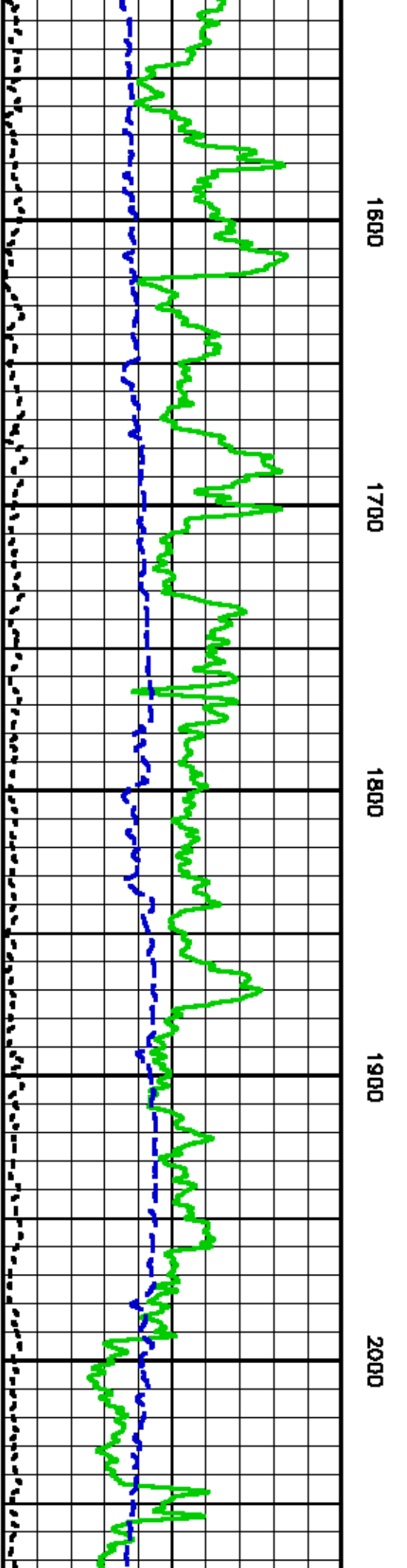
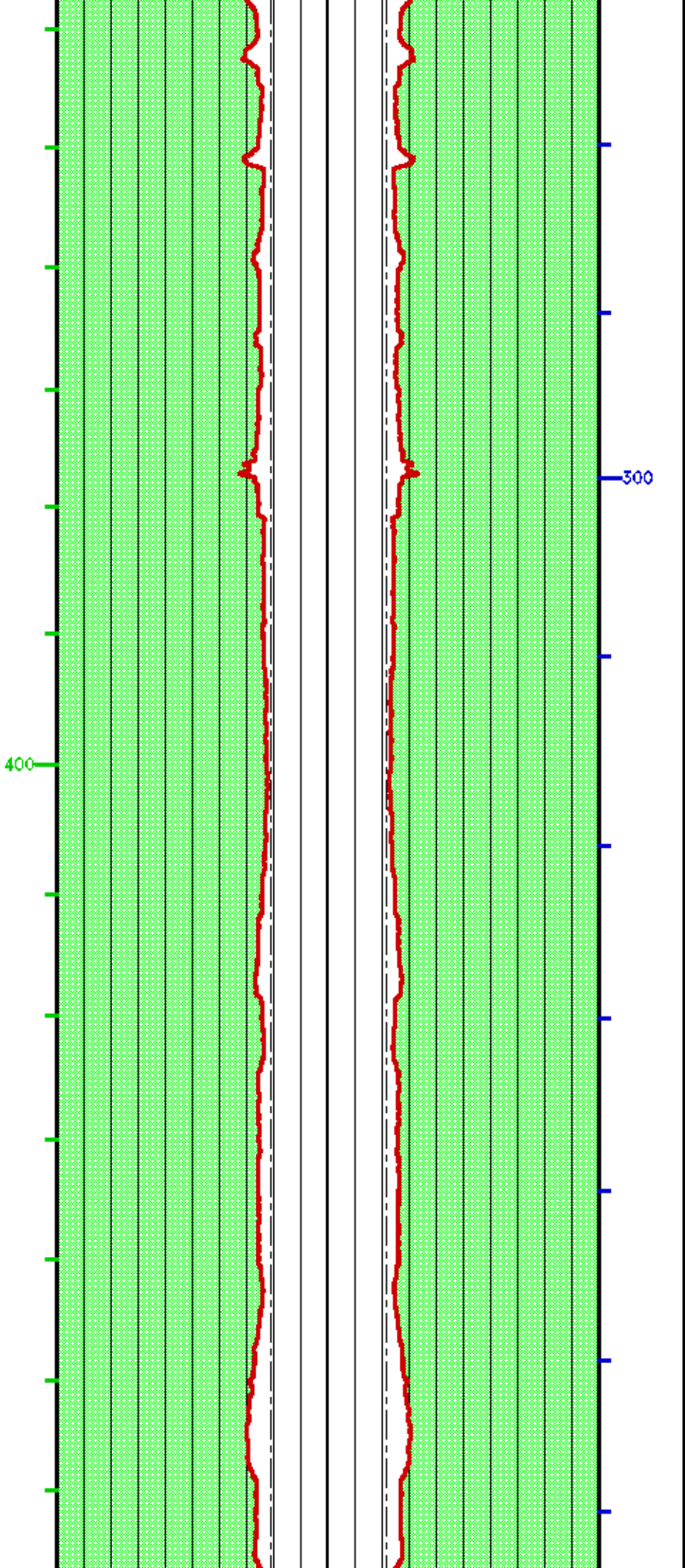
BIT	0.00	GR	114.00	TEN	0.00
CAL	96.50	SP	75.75		

Presentation	: rka4232:/dat1a/15358/bhp1cal.pdf [2"/100' Scale]
Plot Interval	: 650 - 3528.5 Feet
Data File 1	: F1 : rka4232:/dat1a/15358/m771206.off
Created On	: Nov 13 06:52:20 2010
Company	: GRADIENT RESOURCES, INC.
Well	: 13-36
Field	: FALLON I
File Interval	: 594.75 - 3528.5 Feet
Oct	: m7712

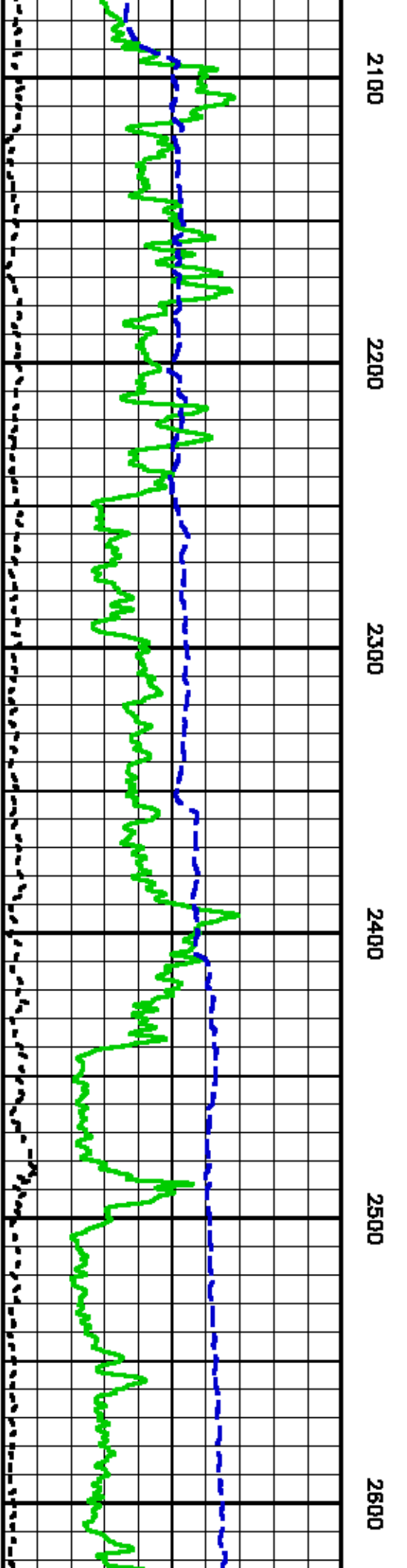
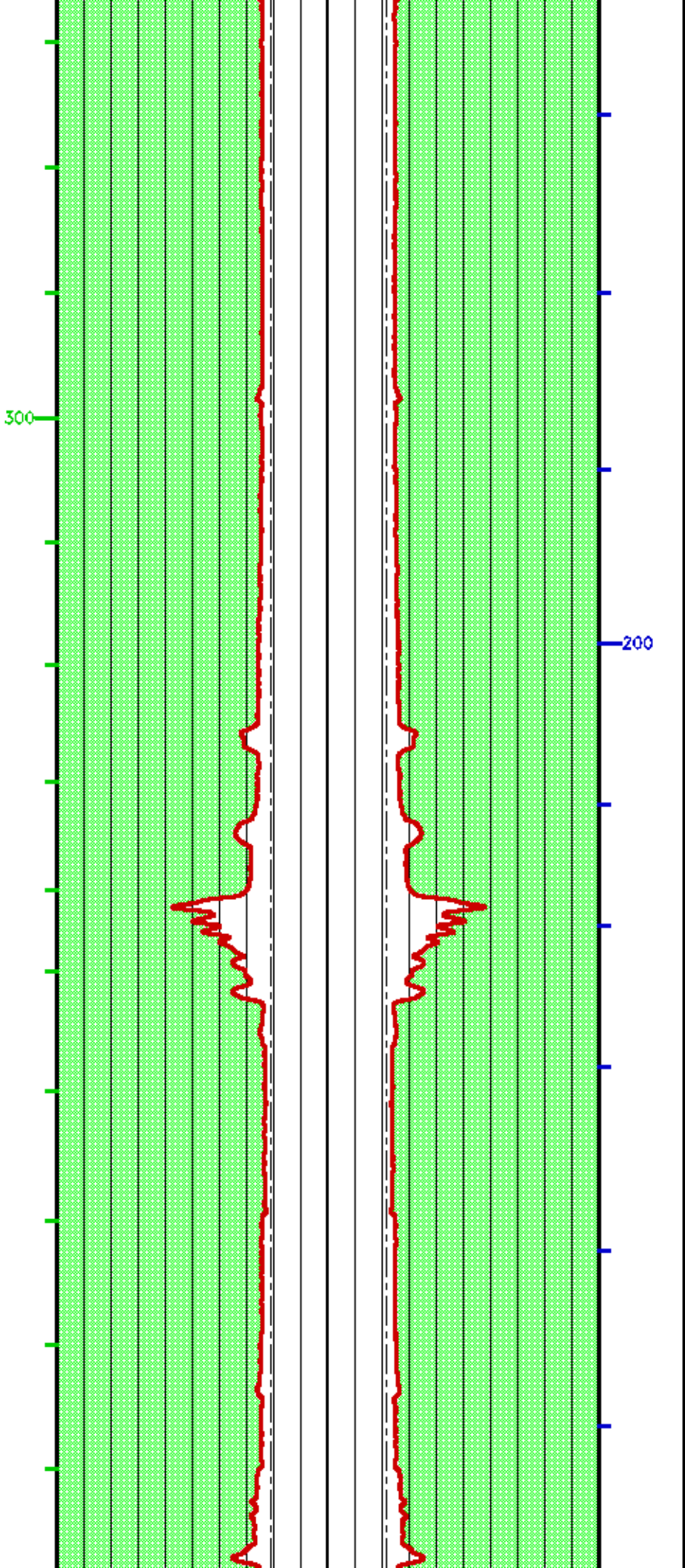


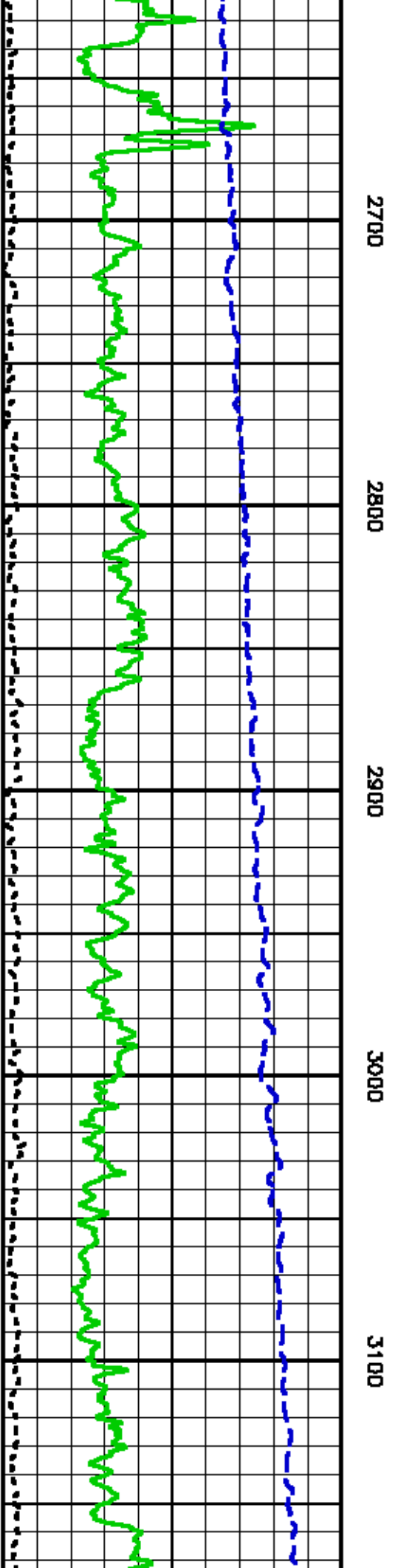
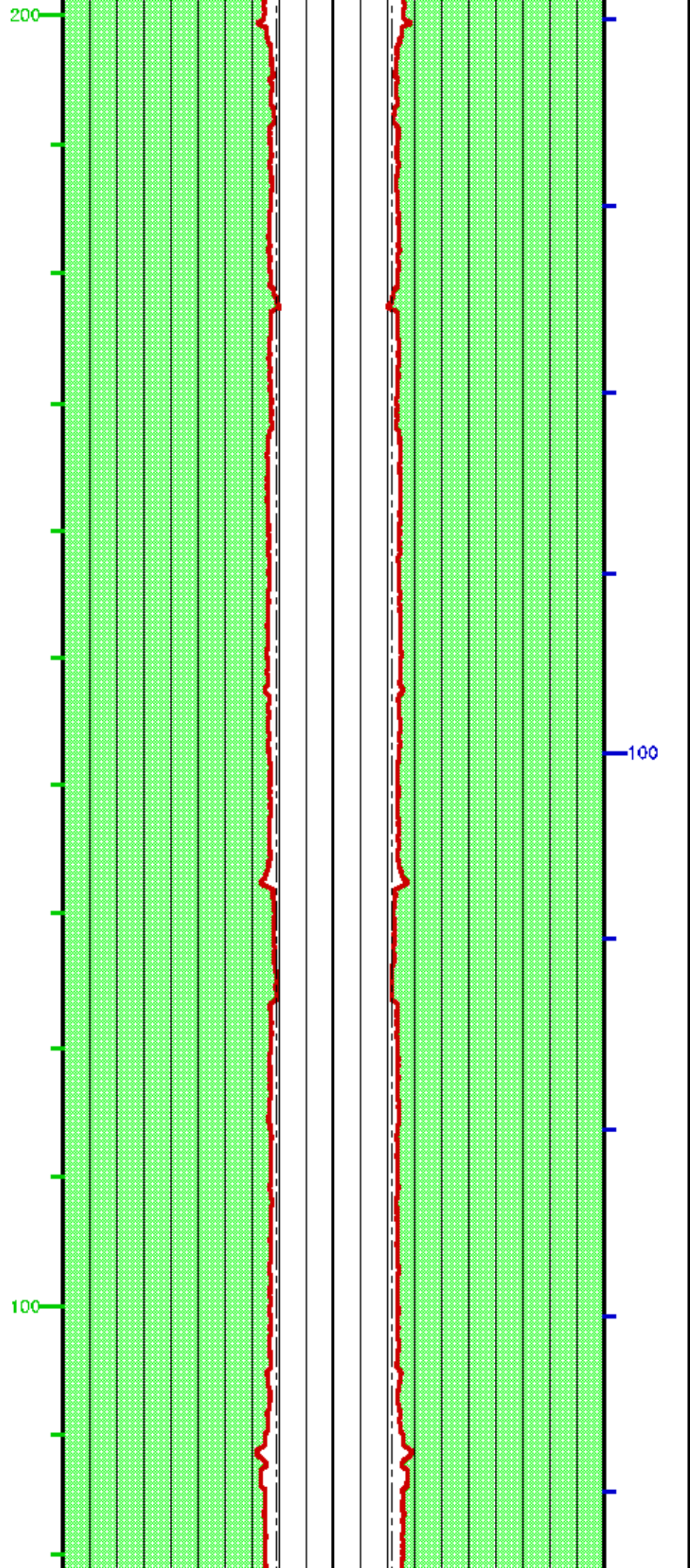




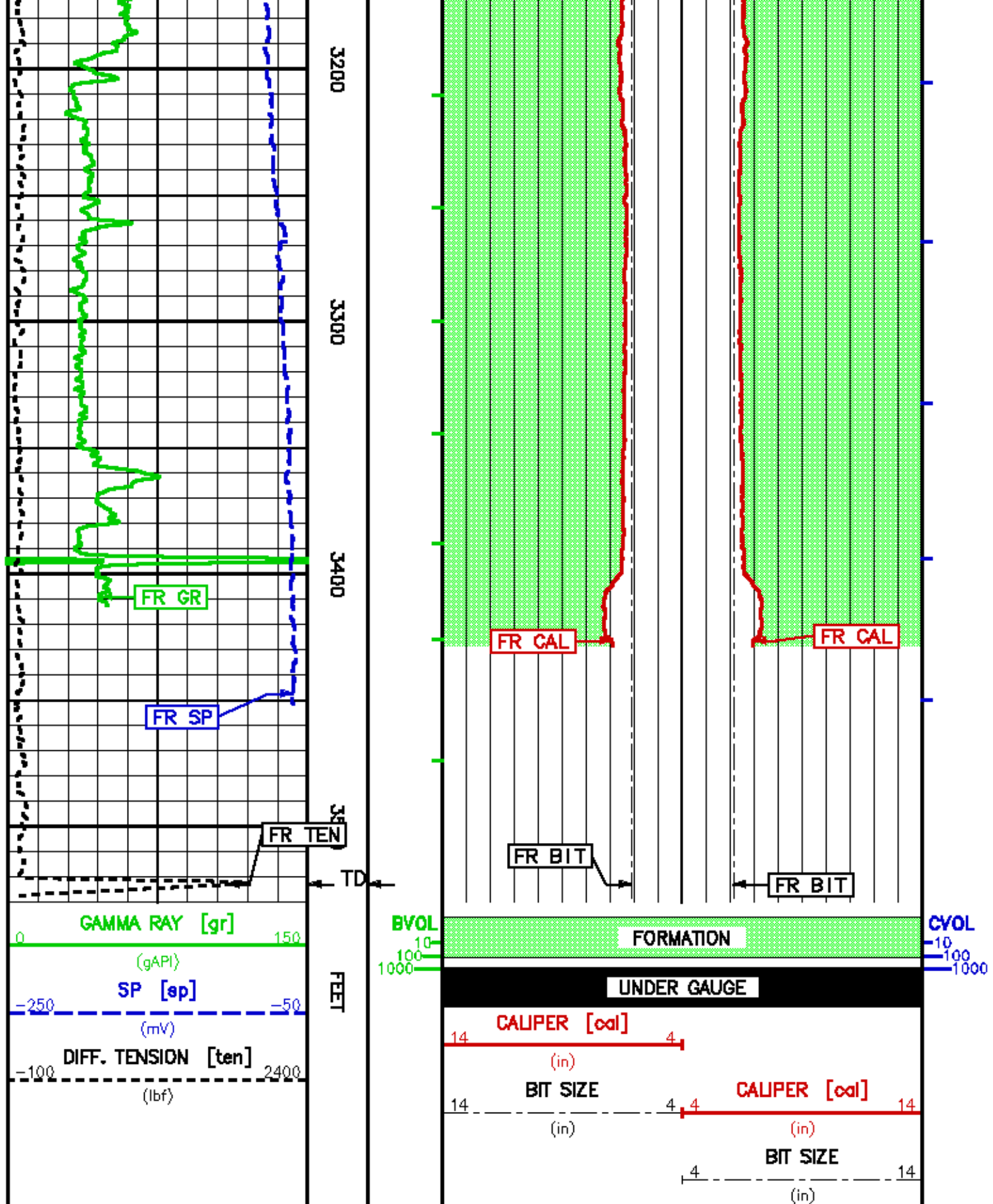












COMPANY  
WELL  
FIELD  
COUNTY

GRADIENT RESOURCES, INC.

13-36

FALLON I

CHURCHILL

STATE NEVADA

FILE NO:

15358

API NO:

27-001-90440





## LOCATION:

354742 E 4380820 N MDM  
UTM NAD 83 ZONE 11N

## ELEVATIONS:

KB 3925 FT

DF 3923 FT

GL 3920 FT

DATE

13-NOV-2010