

HALLIBURTON

FULL WAVE
SONIC
LOG
5"=100'

COMPANY VULCAN POWER COMPANY

WELL SW3A 17-16 OBS

FIELD SALT WELLS

COUNTY CHURCHILL STATE NEVADA

COMPANY VULCAN POWER COMPANY

WELL SW3A 17-16 OBS

FIELD SALT WELLS

COUNTY CHURCHILL STATE NEVADA

API No. 27-001-90332
Location SW 1/4 SW 1/4 SEC16,
T17N,R30E

Other Services
FWS

Sect 16 Twp 17N Rge 30E

Permanent Datum G.L. _____ Elev. 4079'

Log measured from K.B. _____, 18.0' above perm. datum

Drilling measured from K.B. _____

Date FEB-07-2008

Run No. ONE

Depth - Driller 7213'

Depth - Logger 7209'

Bottom - Logged Interval 7200'

Top - Logged Interval 3798'

Casing - Driller 9.625" @ 3796'

Casing - Logger 3798'

Bit Size 7.875"

Type Fluid in Hole NA

Dens. | Visc. 9.0 | 51.0

Ph | Fluid Loss 8.3 | 11.6

Source of Sample FLOWLINE

Rm @ Meas. Temp. 2.50 @ 45 F @ @

Rmf @ Meas. Temp. 2.62 @ 54 F @ @

Rmc @ Meas. Temp. 2.64 @ 41 F @ @

Source Rmf | Rmc MEAS | MEAS

Rm @ BHT 0.63 @ 198 F @ @

Time Since Circ. 2200 02-06

Time on Bottom 0800 02-07

Max. Rec. Temp. 198 F @ TD @ @

Equip. | Location 1118 | WDL D

Recorded By J.OBIKOYA


Witnessed By V.WELCH

Service Ticket No.: 5669502				API Serial No.: 27-001-90332				PGM Version: XL v5.8							
CHANGE IN MUD TYPE OR ADDITIONAL SAMPLES								RESISTIVITY SCALE CHANGES							
Date Sample No.								Type Log		Depth		Scale Up Hole		Scale Down Hole	
Depth – Driller															
Type Fluid															
in Hole															
Dens. Visc.															
Ph Fluid Loss															
Source of Sample								RESISTIVITY EQUIPMENT DATA							
Rm @ Meas. Temp.		@		@		Run No.		Tool Type & No.		Pad Type		Tool Pos.		Other	
Rmf @ Meas. Temp.		@		@		ONE		HRIT 087_248W		NA		1.50" SO		NA	
Rmc @ Meas. Temp.		@		@											
Source Rmf Rmc															
Rm @ BHT		@		@											
Rmf @ BHT		@		@											
Rmc @ BHT		@		@											
EQUIPMENT DATA															
GAMMA				ACOUSTIC				DENSITY				NEUTRON			
Run No.		ONE		Run No.		ONE		Run No.		ONE		Run No.		ONE	
Serial No.		X029		Serial No.		4601 324		Serial No.		I022P037		Serial No.		004	
Model No.		D4TG_X		Model No.		305B FWS		Model No.		SDLT-DA		Model No.		DSNT-X	
Diameter		3.625"		No. of Cent.		TWO		Diameter		5.500"		Diameter		3.625'	
Detector Model No.		432		Spacing		2 FEET		Log Type		GAM-GAM		Log Type		NEU-NEU	
Type		SCINT						Source Type		CS-137		Source Type		AM241BE	
Length		4.00"		LSA [Y / N]		NO		Serial No.		5101 GW		Serial No.		DSN-367	
Distance to Source		45.0'		FWDA [Y / N]		NO		Strength		1.5 CI		Strength		15.0 CI	
LOGGING DATA															
GENERAL				GAMMA		ACOUSTIC			DENSITY			NEUTRON			
Run		Depth		Speed		Scale		Scale		Scale		Scale			
No.	From	To	Ft / Min	L	R	L	R	Matrix	L	R	Matrix	L	R	Matrix	
ONE	7209'	3798'	60	0	200	0	8000	SAND	1.65	2.65	2.65	60	0	SAND	
				API	API	US	US		GMCC	GMCC	GMCC	%	%		

— Fold Here

DIRECTIONAL INFORMATION									
Maximum Deviation		deg. @		KOP					
Remarks:									
HRID-FWS-FIAC-SDLT-ML-DSNT-D4TG_X-HRTT-RWCH RUN IN COMBINATION.									
ANNULAR HOLE VOLUME CALCULATED USING 4.5" CASING									
BIT SIZE 8.5" FROM 5254' TO CASING SHOE									
BIT SIZE 7.875" FROM T.D TO 5254'									
LOG RESPONSE REPEATED ON BOTH DOWNLOG AND REPEAT SECTION									
CREW: CARRASCO,PYLES, J.GUZMAN					RIG: ROCKET DRILLCO #2				
HALLIBURTON DOES NOT GUARANTEE THE ACCURACY OF ANY INTERPRETATION OF THE LOG DATA, CONVERSION OF LOG DATA TO PHYSICAL ROCK PARAMETERS OR RECOMMENDATIONS WHICH MAY BE GIVEN BY HALLIBURTON PERSONNEL OR WHICH APPEAR ON THE LOG OR IN ANY OTHER FORM. ANY USER OF SUCH DATA, INTERPRETATIONS, CONVERSIONS, OR RECOMMENDATIONS AGREES THAT HALLIBURTON IS NOT RESPONSIBLE EXCEPT WHERE DUE TO GROSS NEGLIGENCE OR WILLFUL MISCONDUCT, FOR ANY LOSS, DAMAGES, OR EXPENSES RESULTING FROM THE USE THEREOF.									
HALLIBURTON									

MAIN PASS 5"=100'



Version No: | hc:3.0

Data File: main.cls

Format File: wave.spc

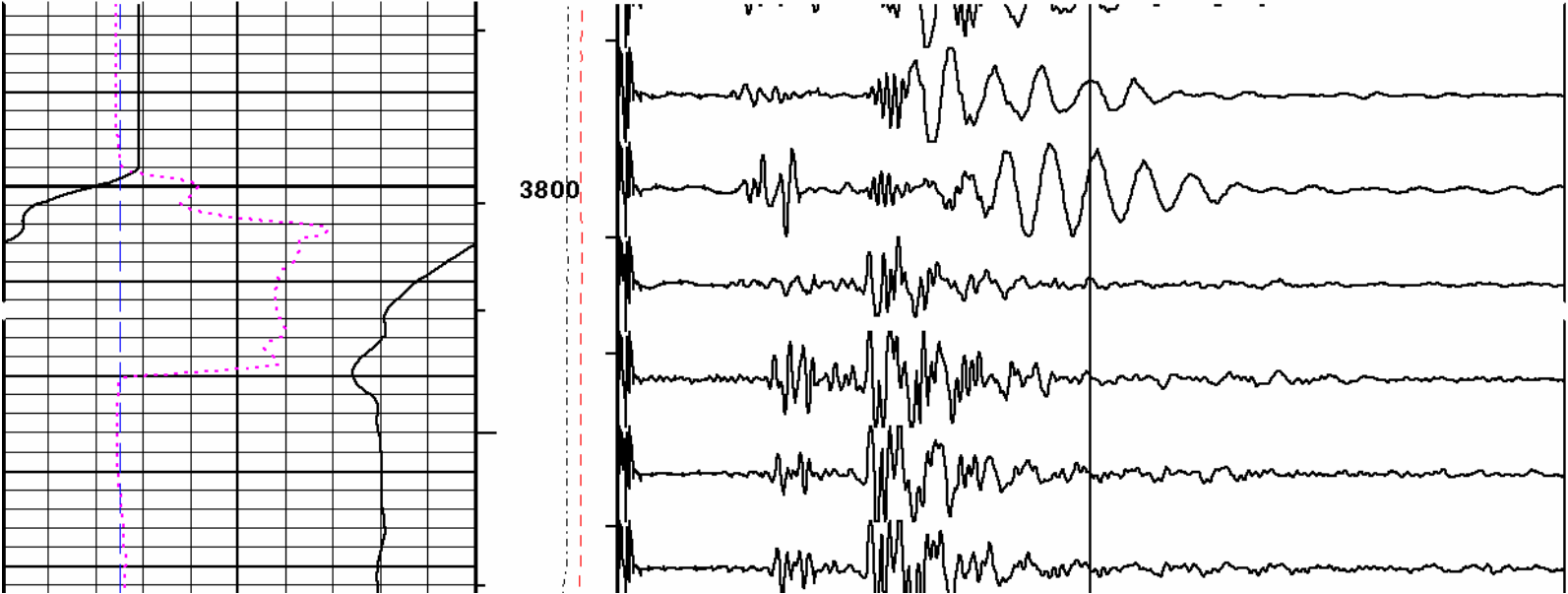
Plot Time: 2008-02-07 12:45:56

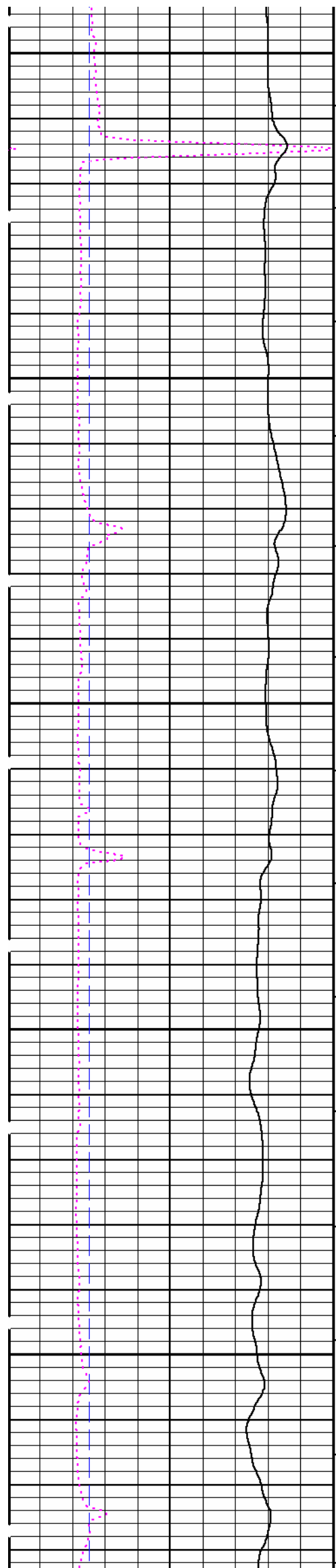
Database Time: 12:11:46

Top Depth: 3780.00

Bottom Depth: 7220.25

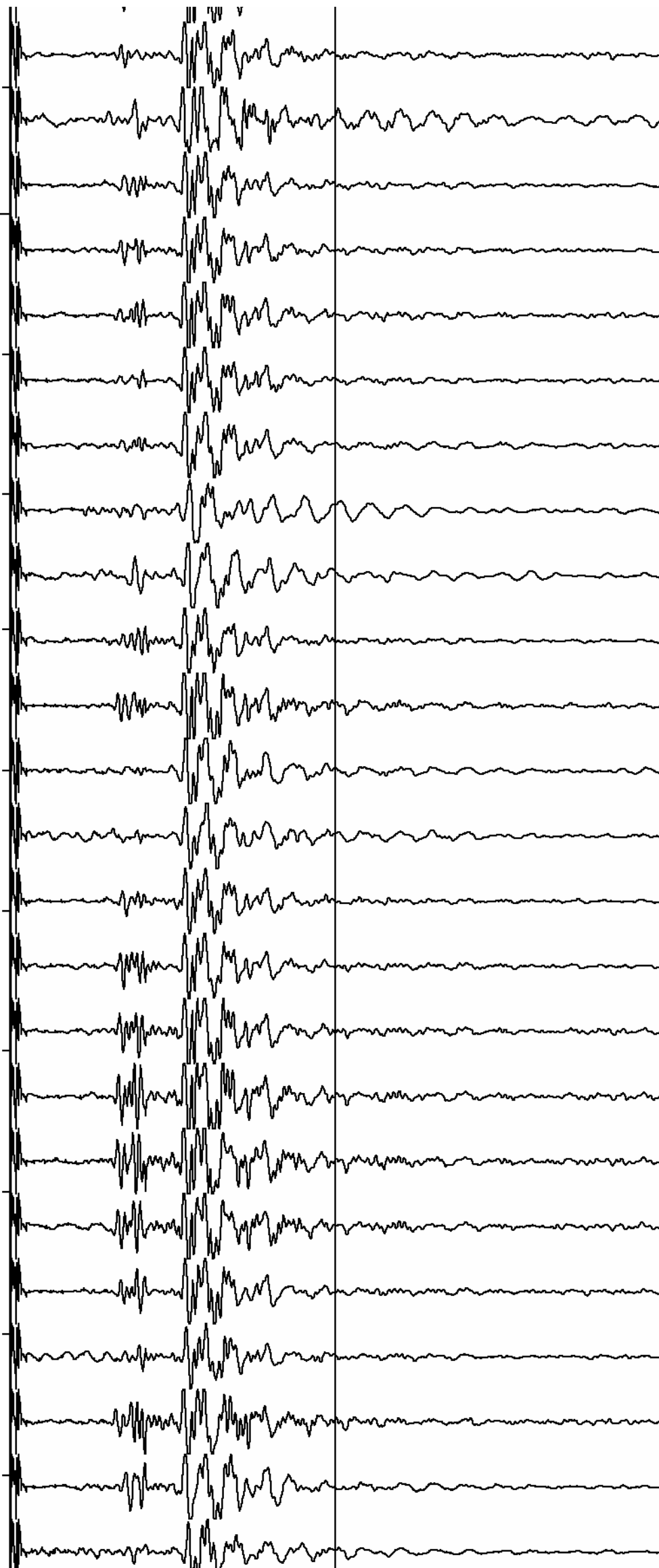
CALA			AHV		RECEIVER 1	
6	INCH	16	100 FT3	0 0		8000
BS			BHV			
6	INCH	16	0	FT3 100		
SP			STEN			
-]10[+			10500 500			
			CHTEN			
			10000 0			
			1:240			
			FT.			
					8000	

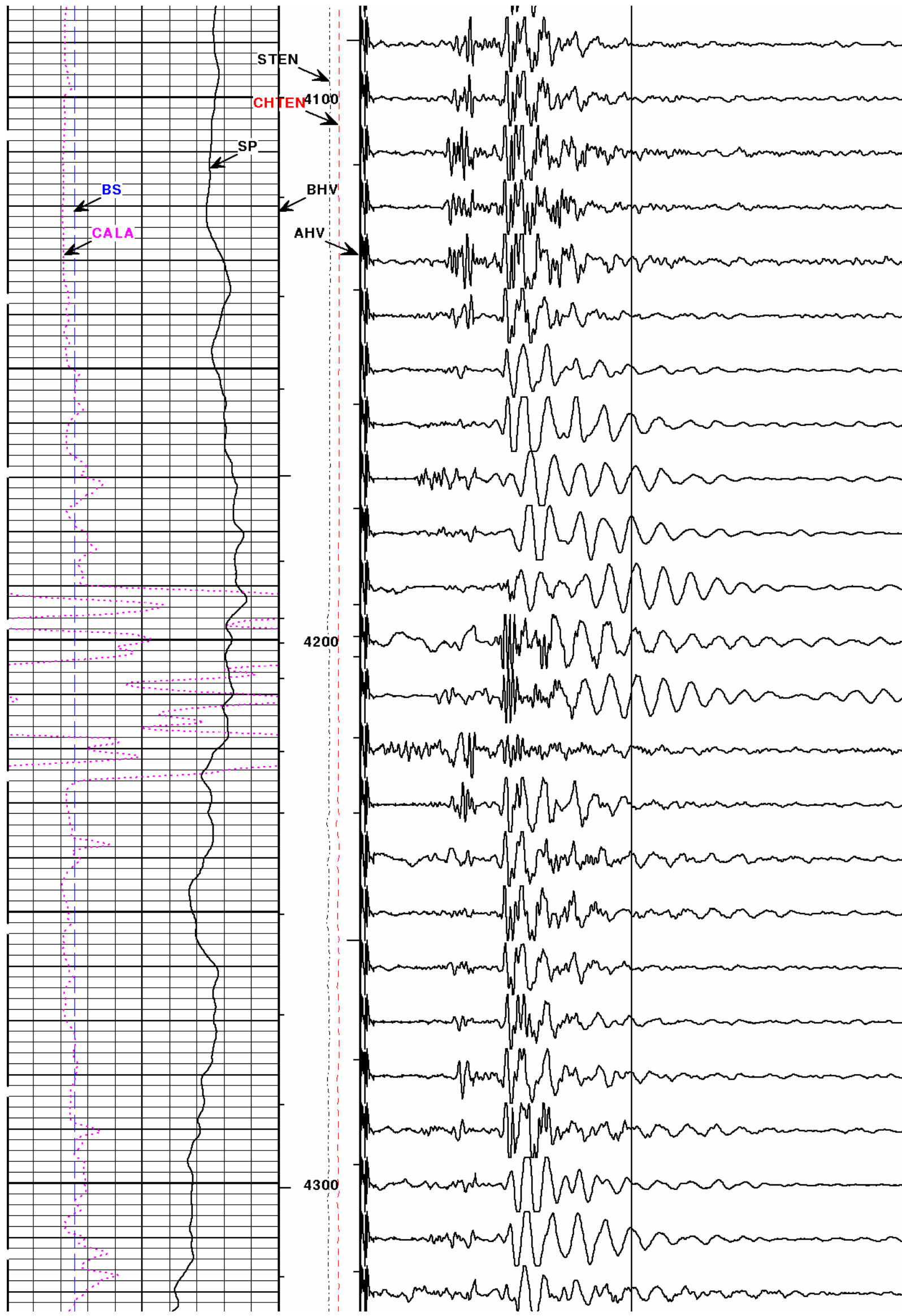


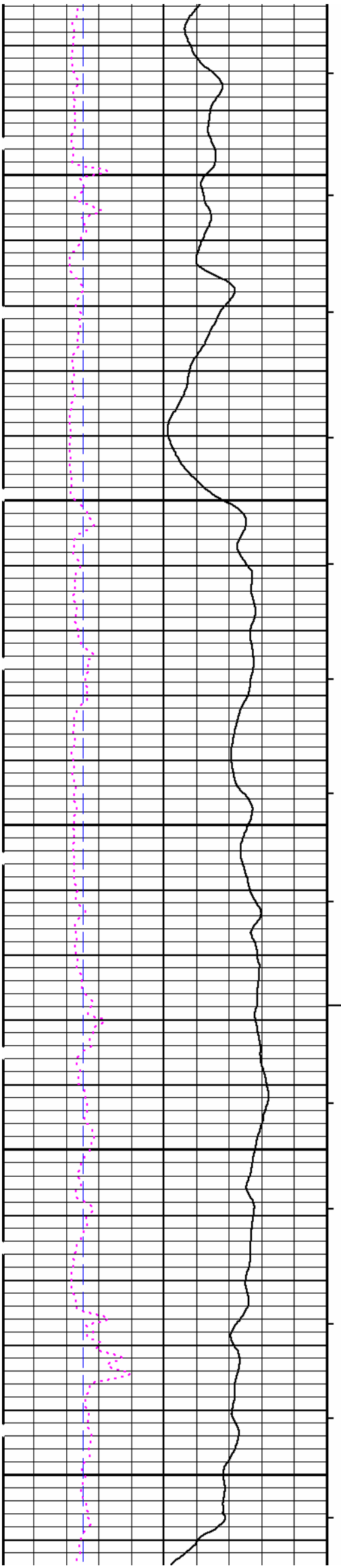


3900

4000

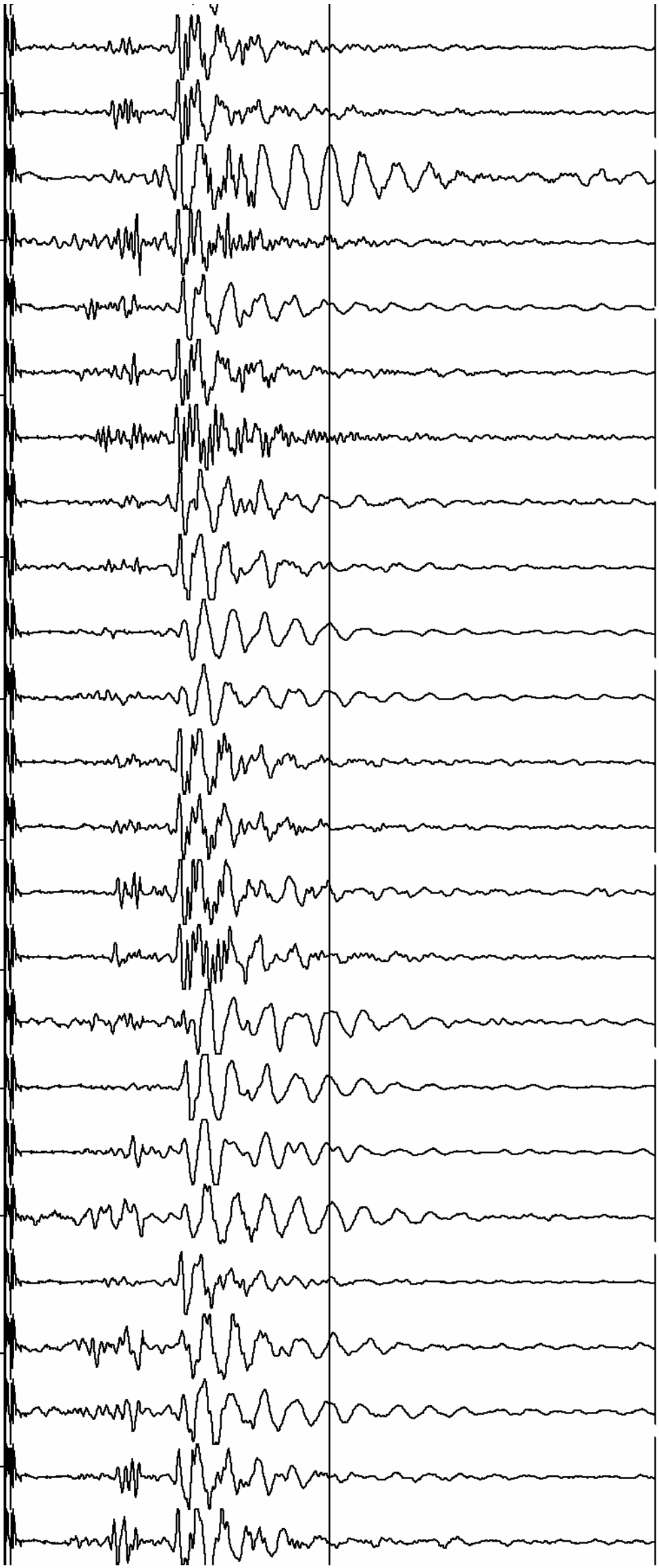


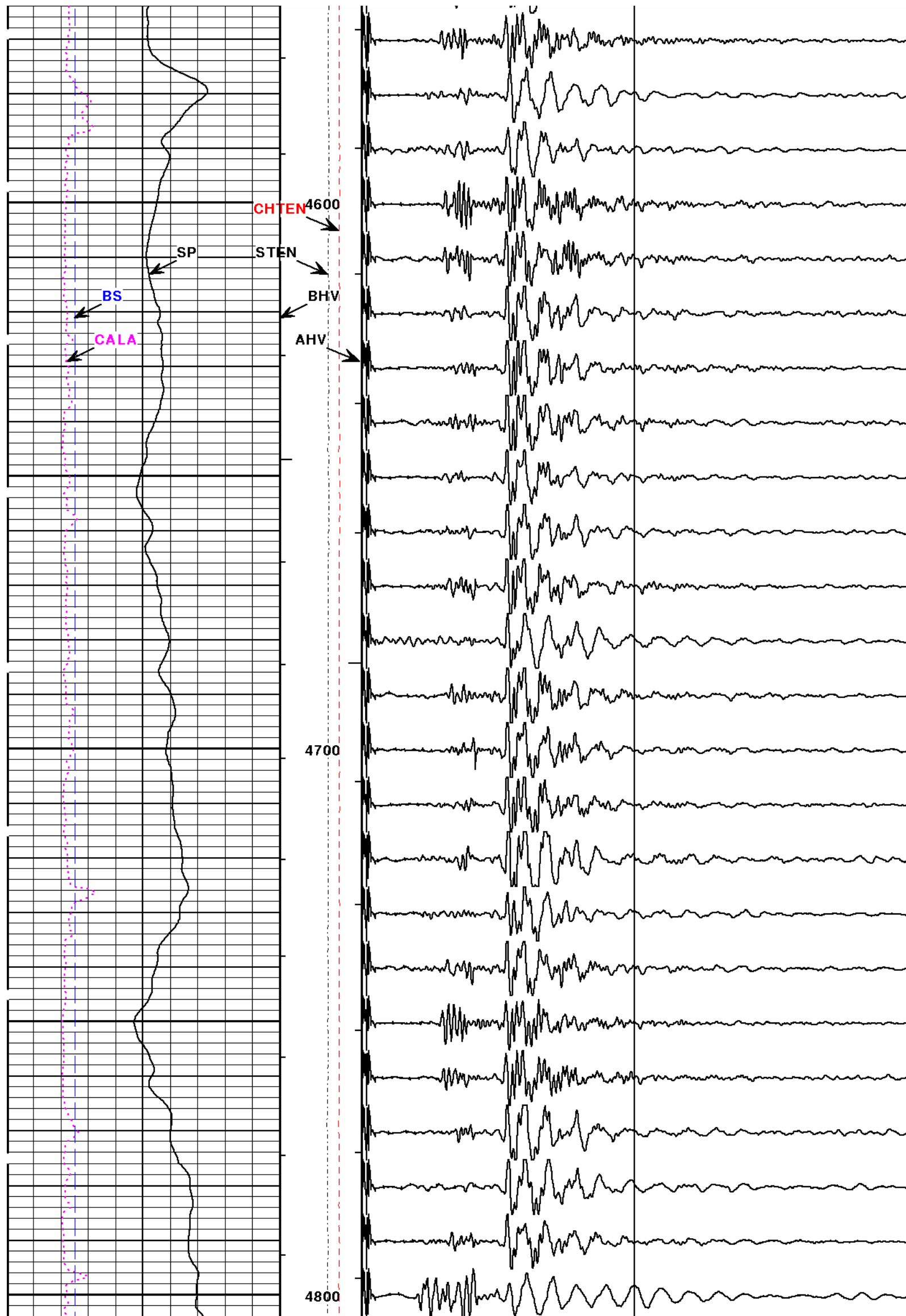


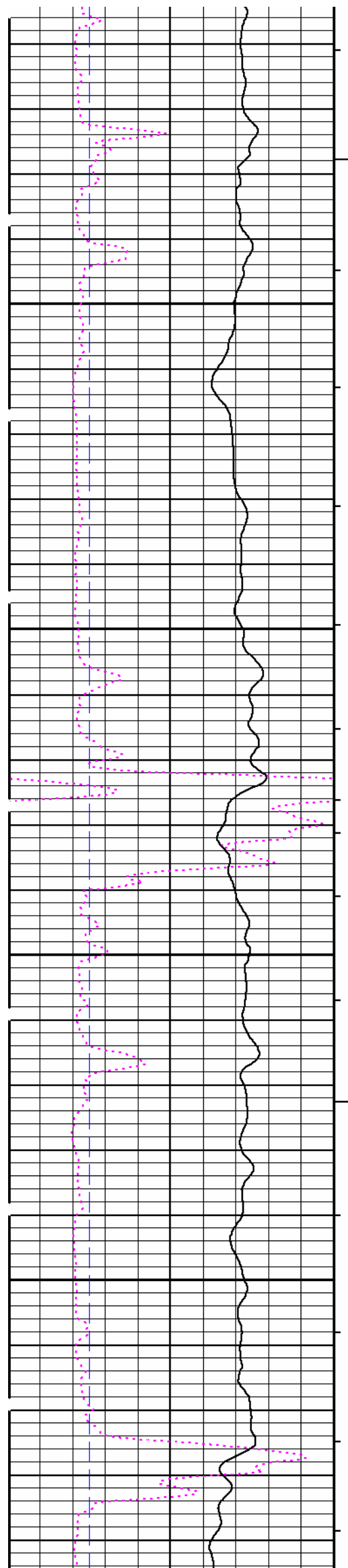


4400

4500

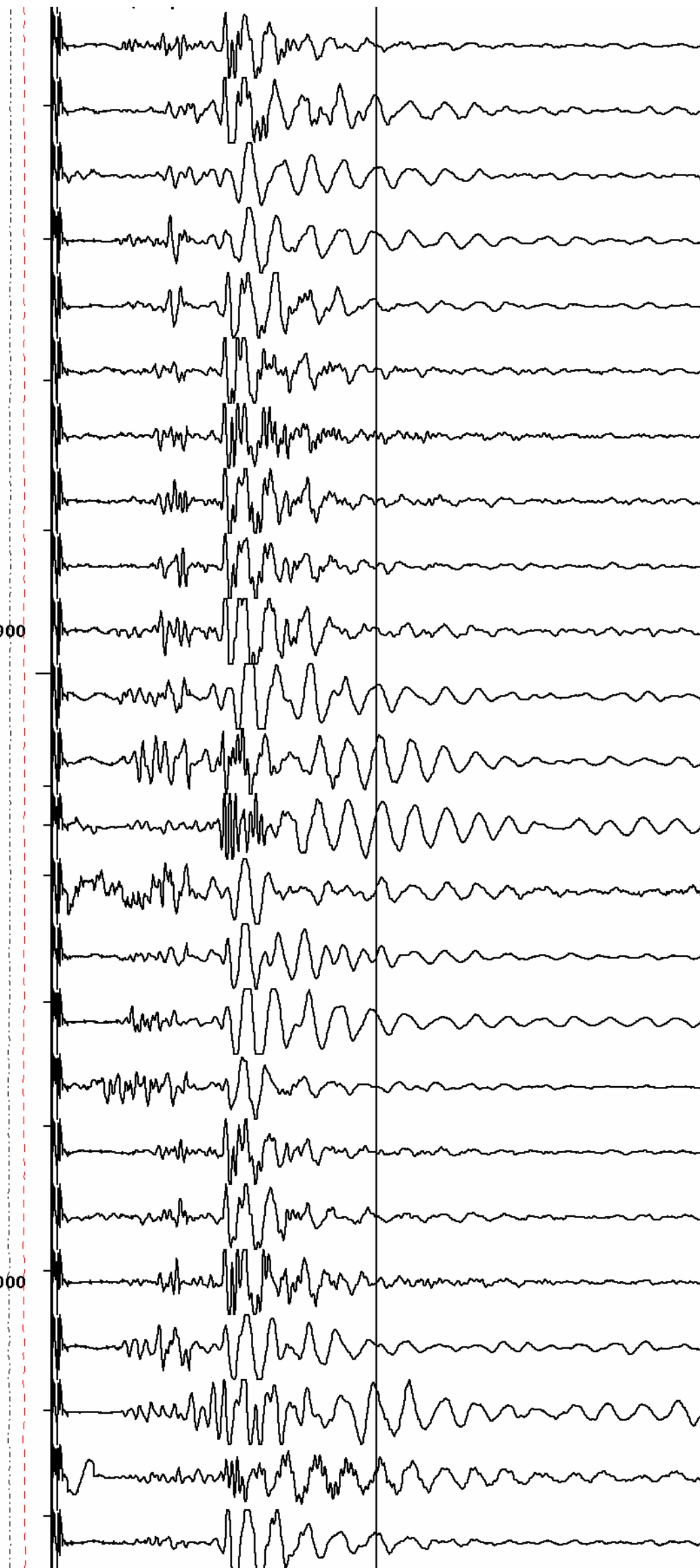


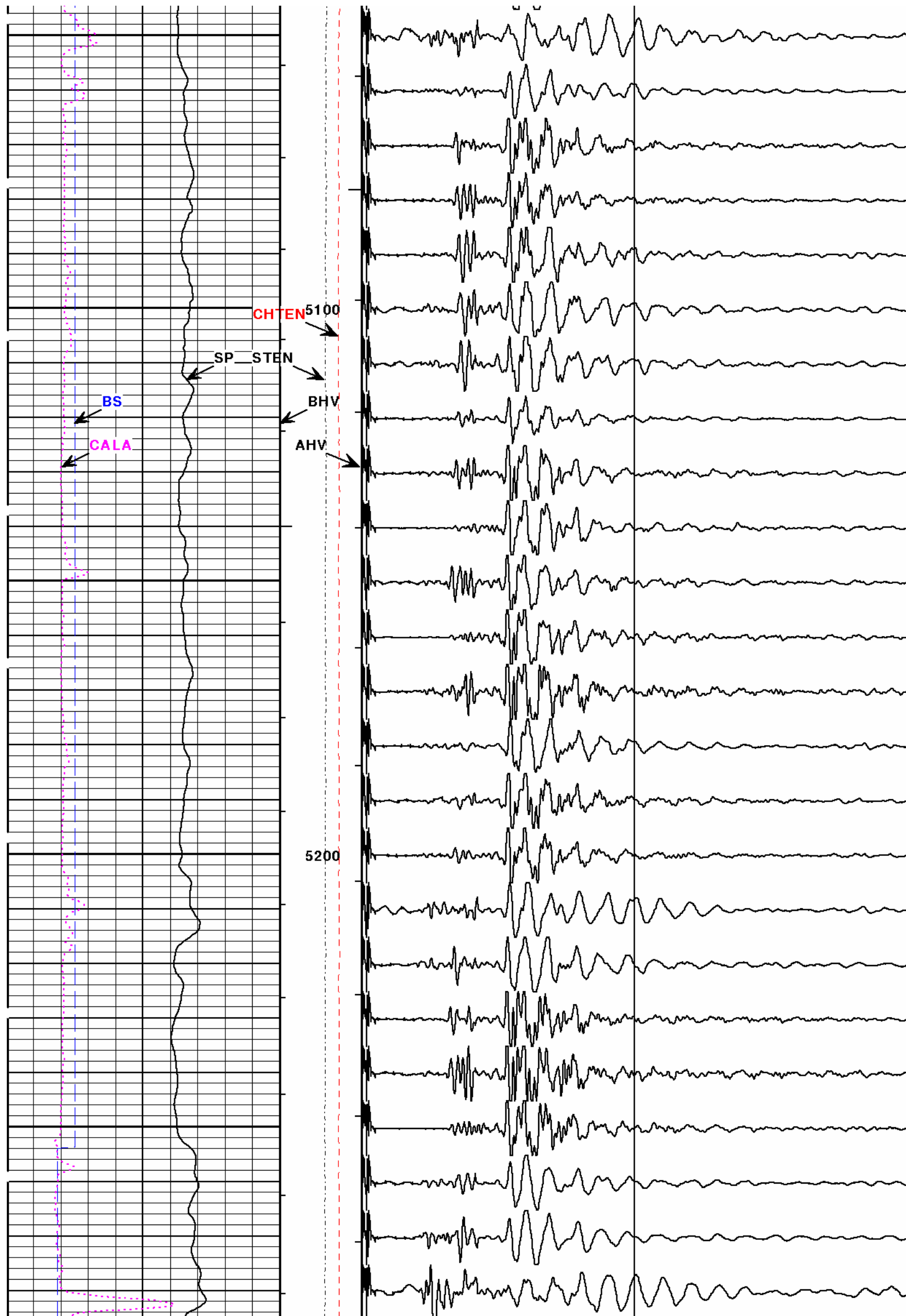


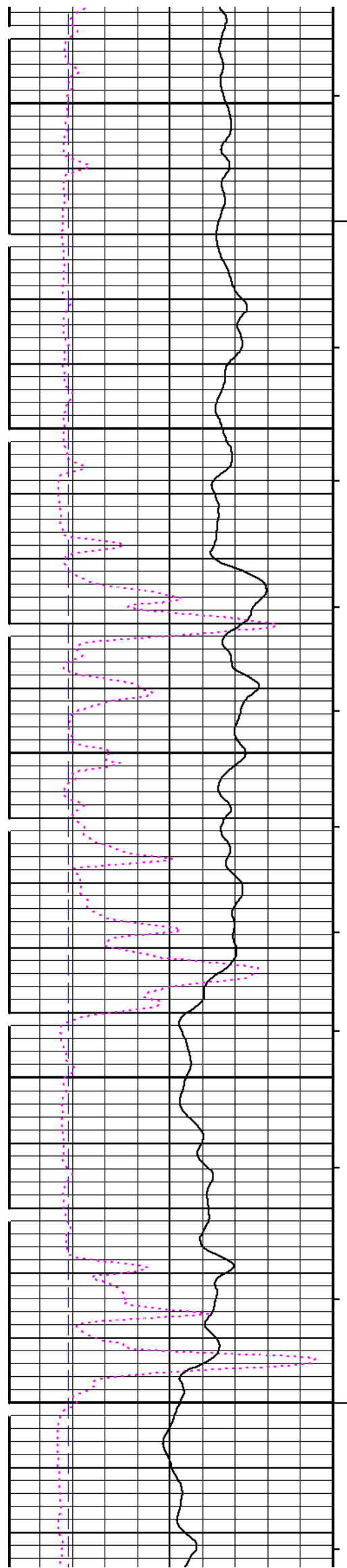


4900

5000



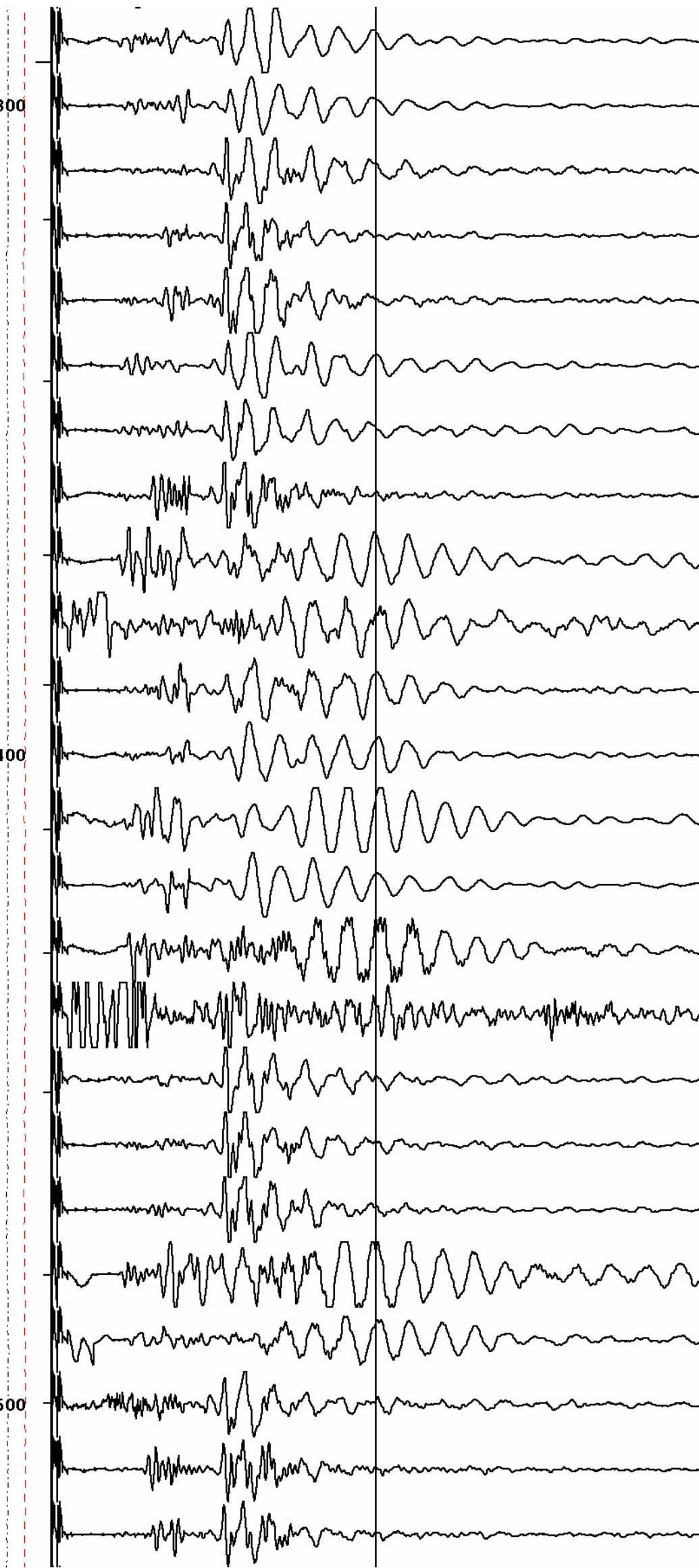


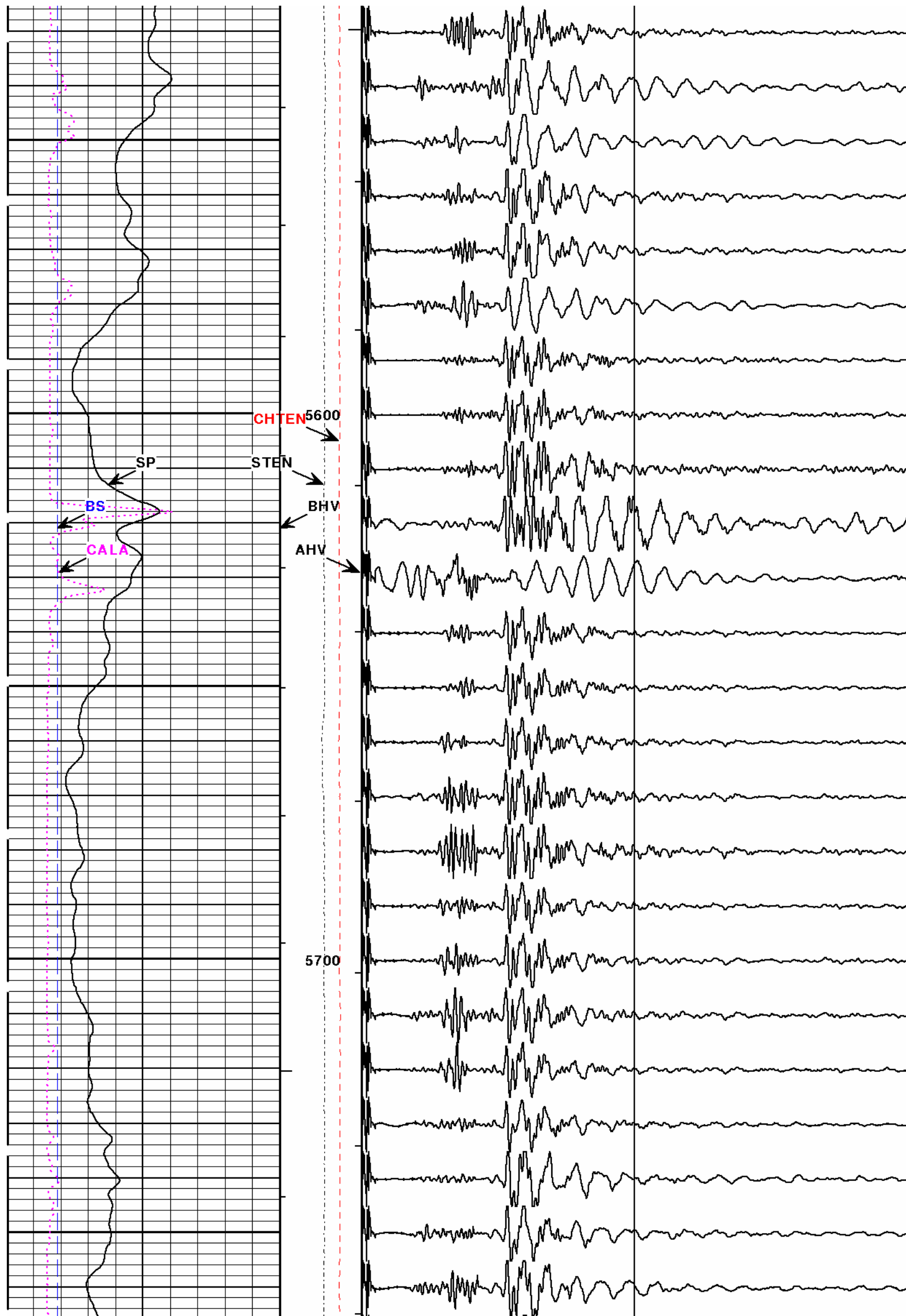


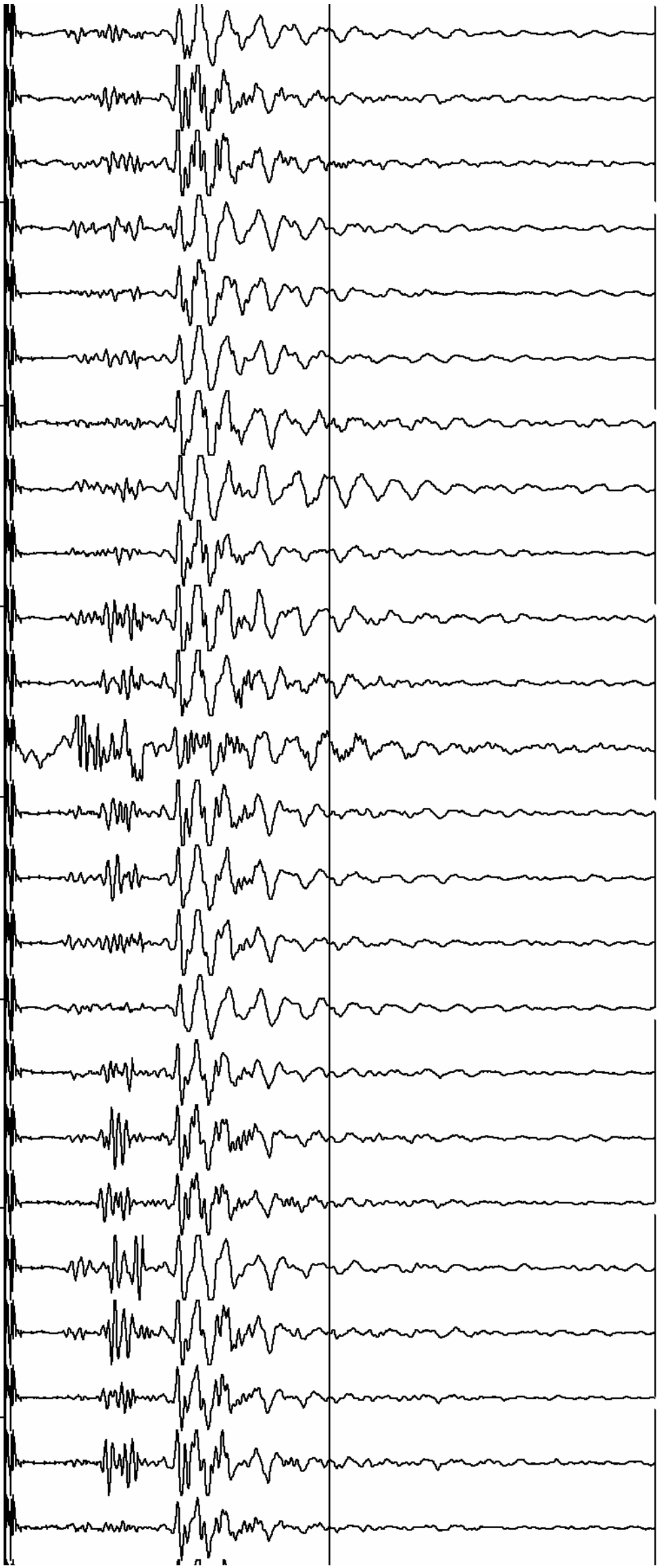
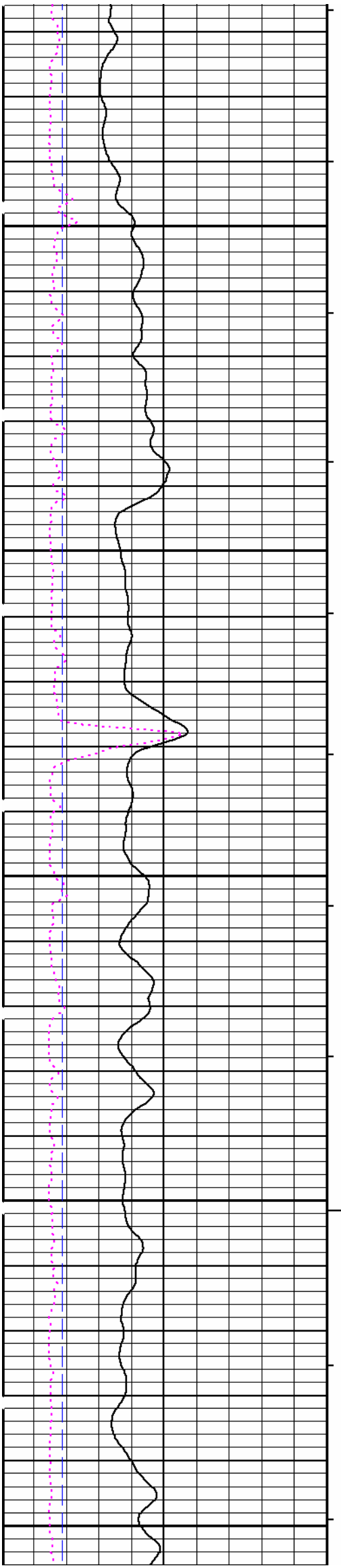
5300

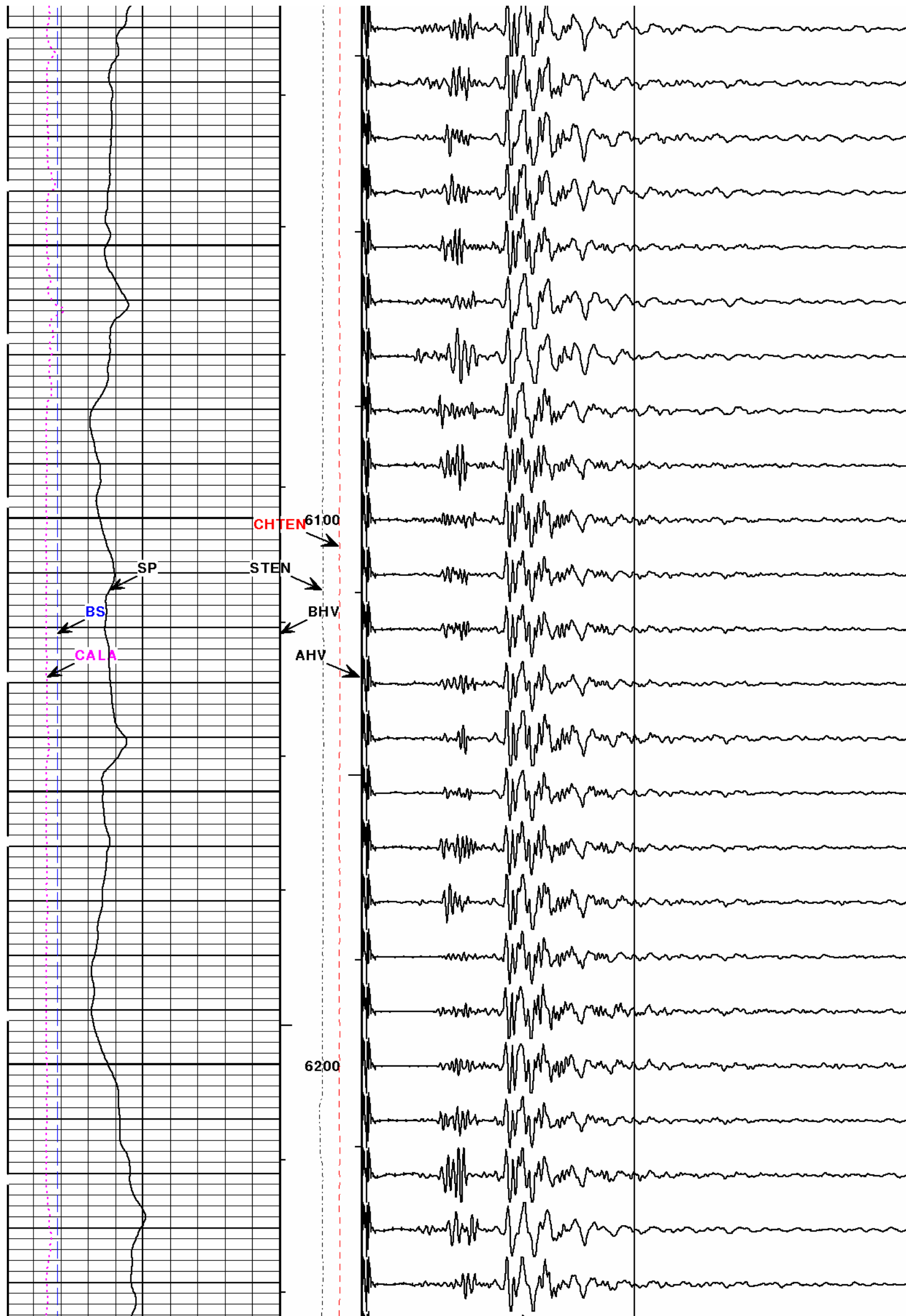
5400

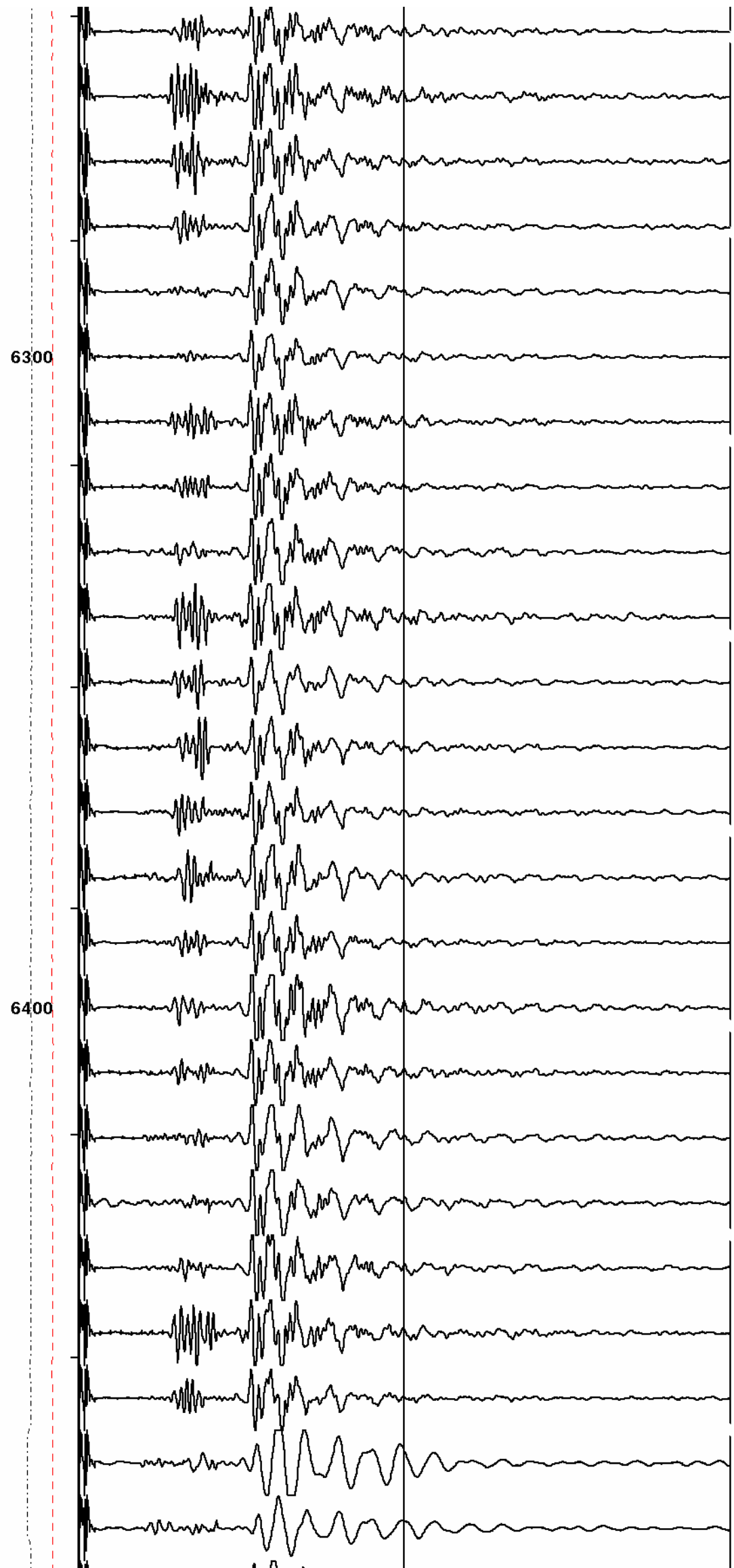
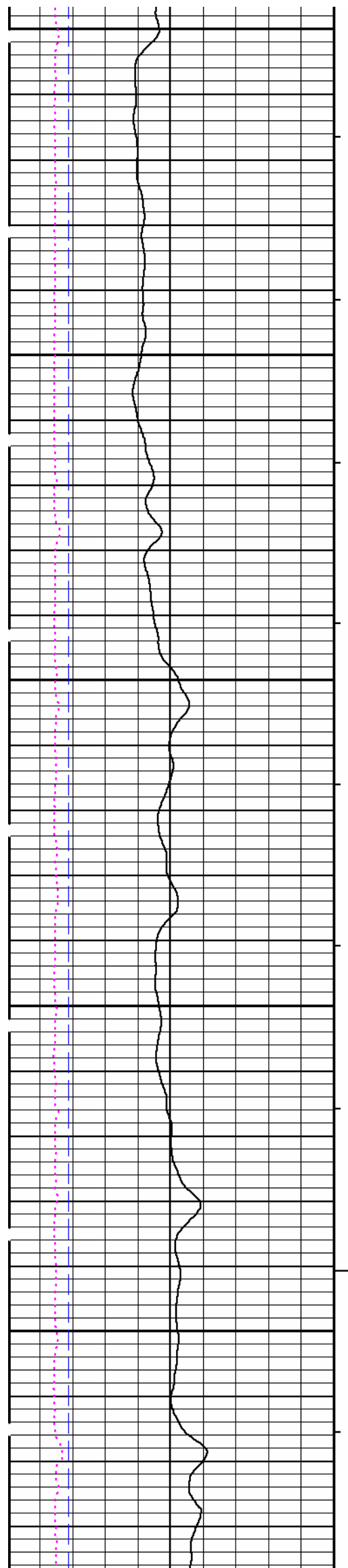
5500

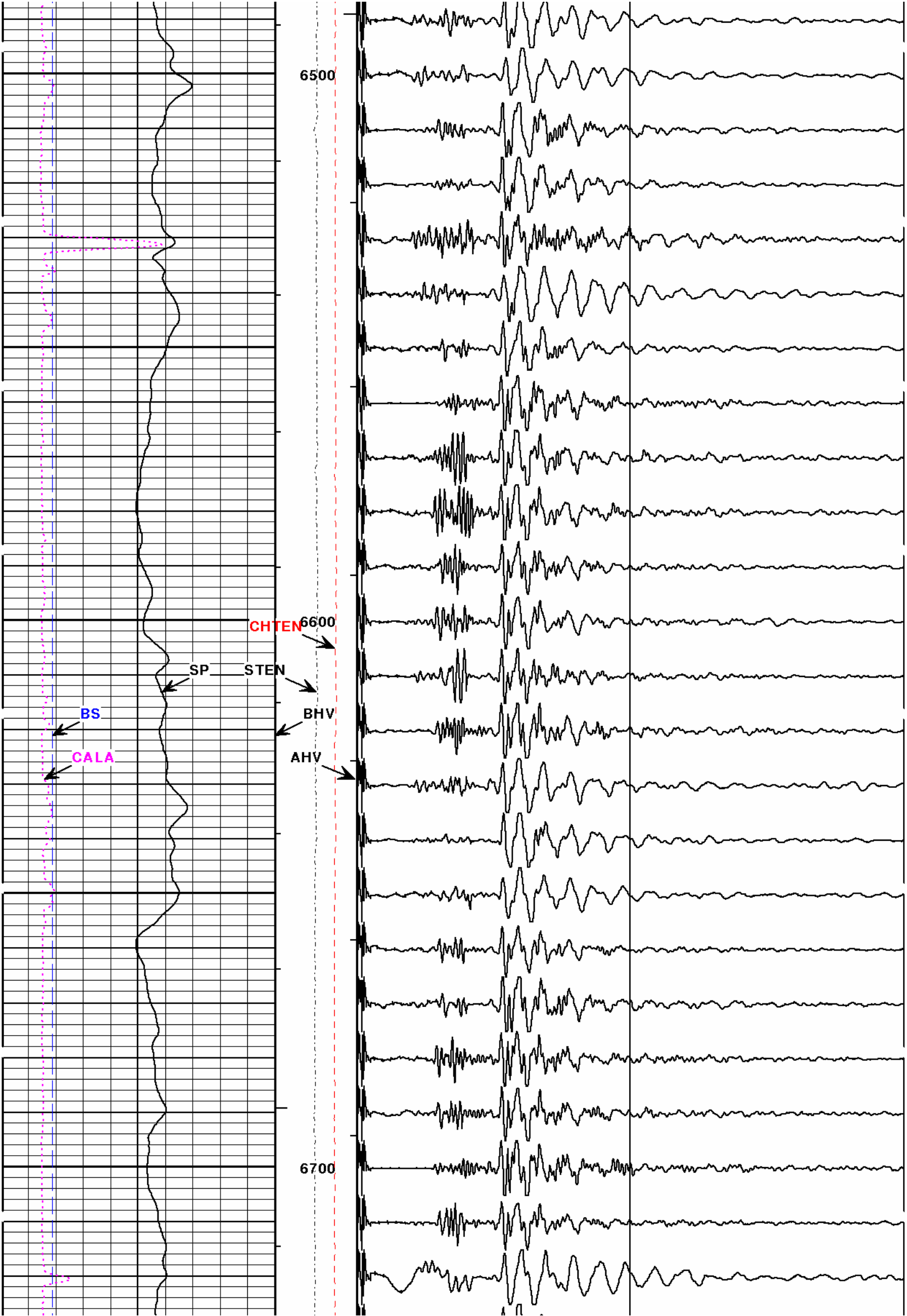


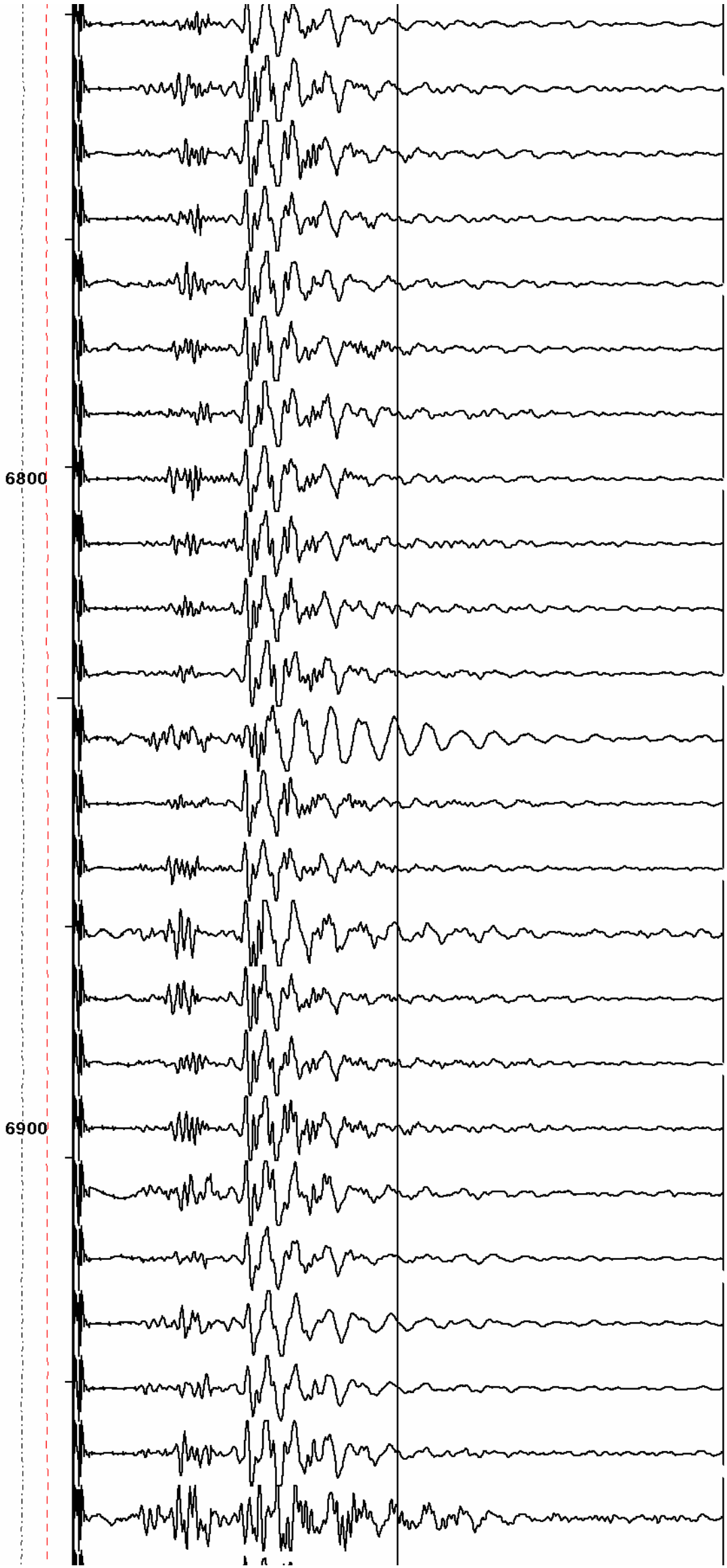
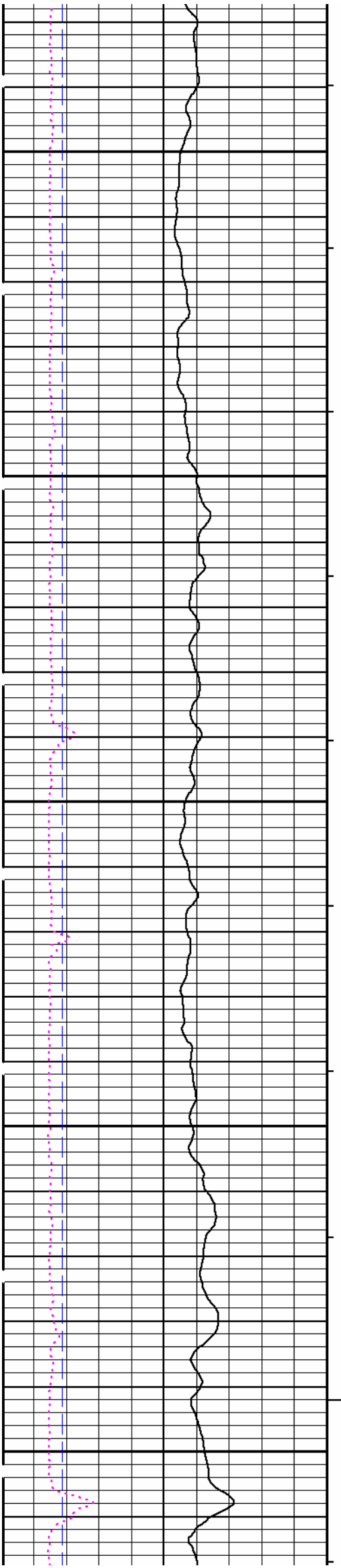


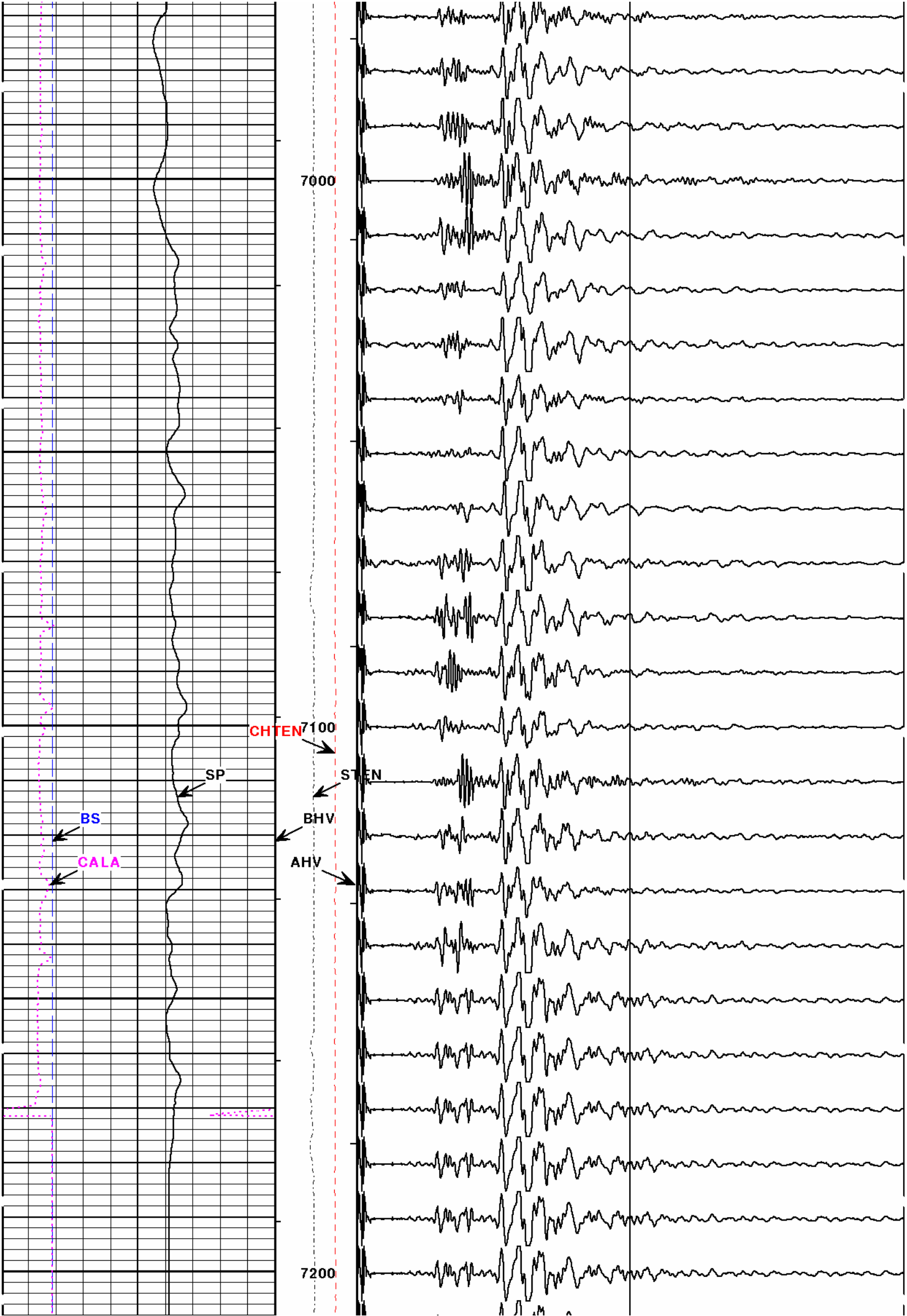















		1:240 FT.				
		CHTEN				
		10000	0			
SP		STEN				
-]10[+		10500	500			
BS		BHV				
6	INCH	16	0	FT3	100	
CALA		AHV				
6	INCH	16	100	FT3	0	0
					RECEIVER 1	8000



Version No: | hc:3.0

Data File: main.cls

Format File: wave.spc


Plot Time: 2008-02-07 12:45:38

Database Time: 12:11:46

Top Depth: 3780.00

Bottom Depth: 7220.25

COMPANY	VULCAN POWER COMPANY		
WELL	SW3A 17-16 OBS		
FIELD	SALT WELLS		
COUNTY	CHURCHILL	STATE	NEVADA



FULL WAVE
SONIC
LOG

5"=100'