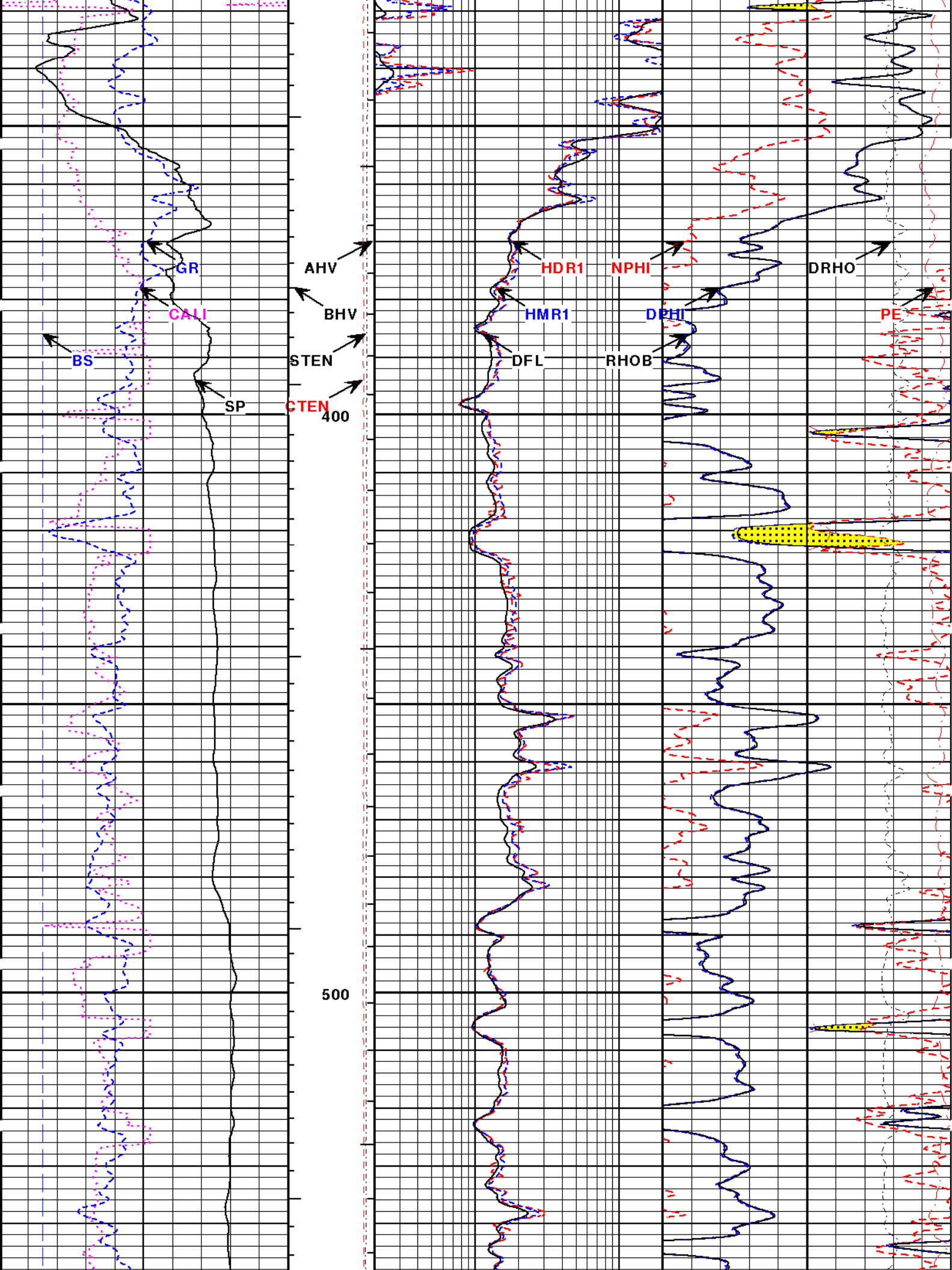
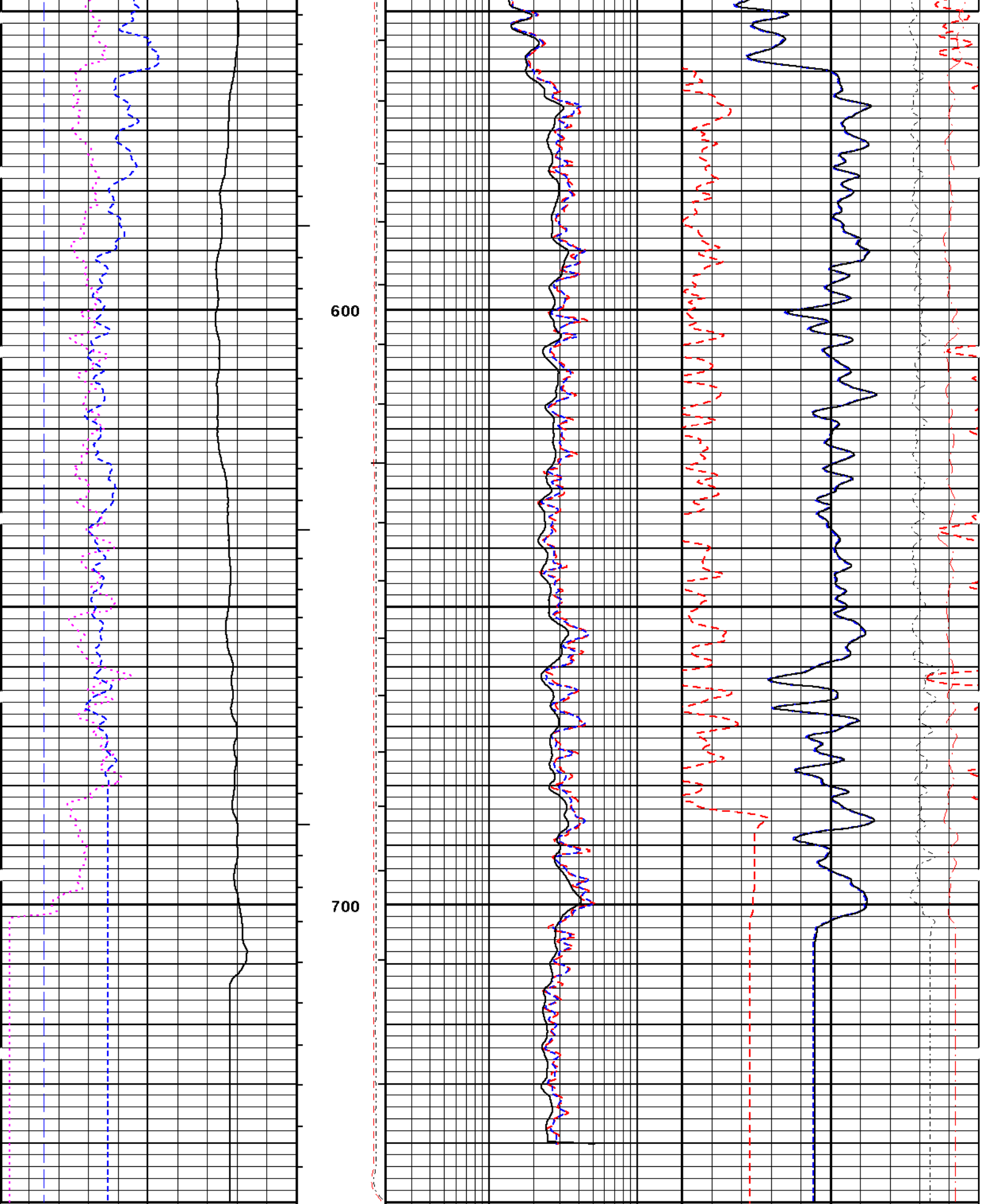


Fold Here





-]10[+			10000 0								-0.5 G/CC 0.5		
BS			STEN		DFL			RHOB					
16	INCH	26	10500	500	0.2	OHM	20	1.65	G/CC			2.65	
CALI			BHV		HMR1			DPHI					
16	INCH	26	0	FT3 100	0.2	OHMM	20	60.	%			0	
GR			AHV		HDR1			NPHI					
0	API	150	100	FT3 0	0.2	OHMM	20	60.	%			0	

HALLIBURTON

Version No: | hc:3.0
Data File: MER1.cls
Format File: 5T.TIF.spc
Plot Time: 2008-09-21 11:55:28
Database Time: 10:39:43

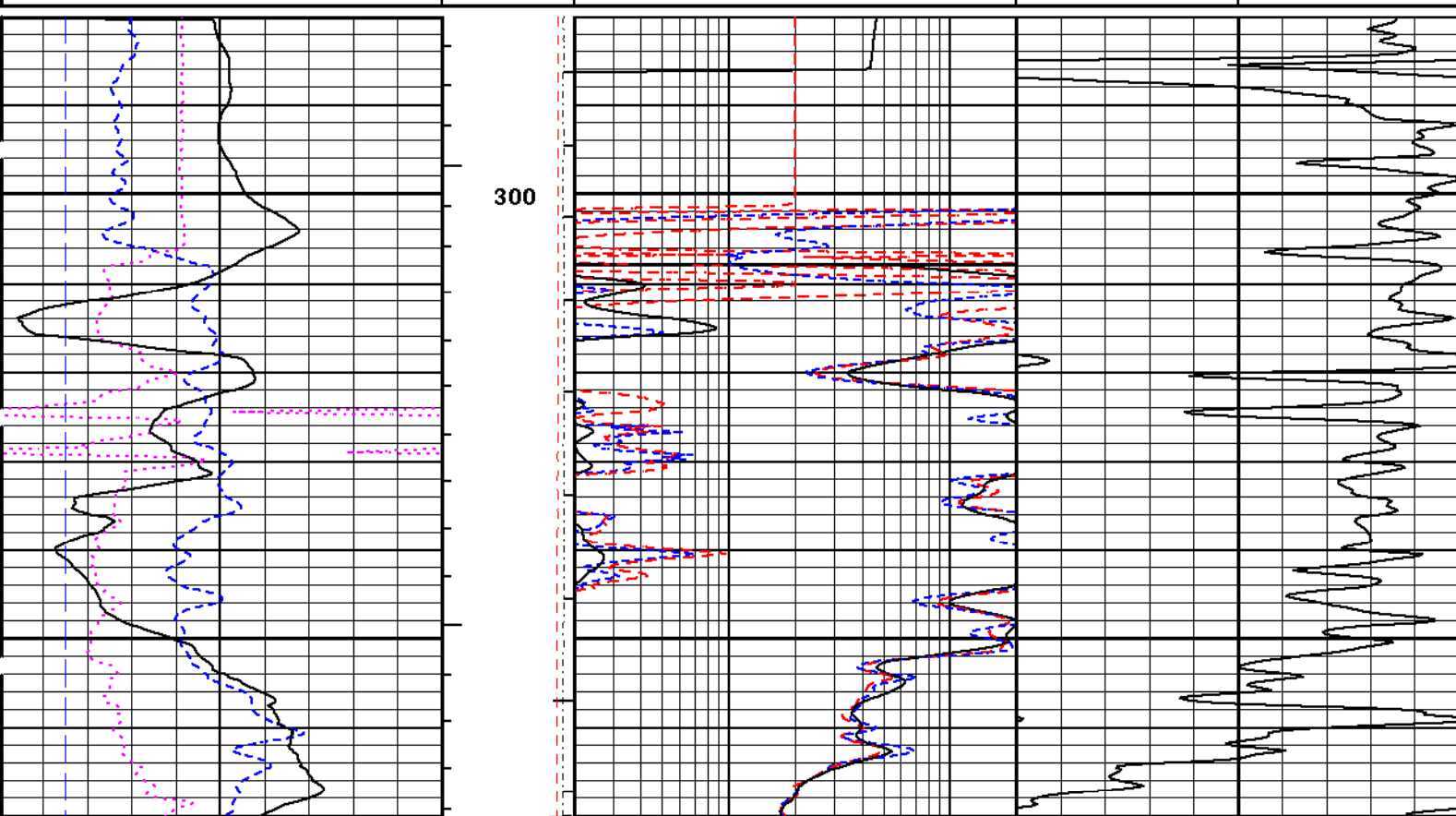
Top Depth: 280.00
Bottom Depth: 750.83

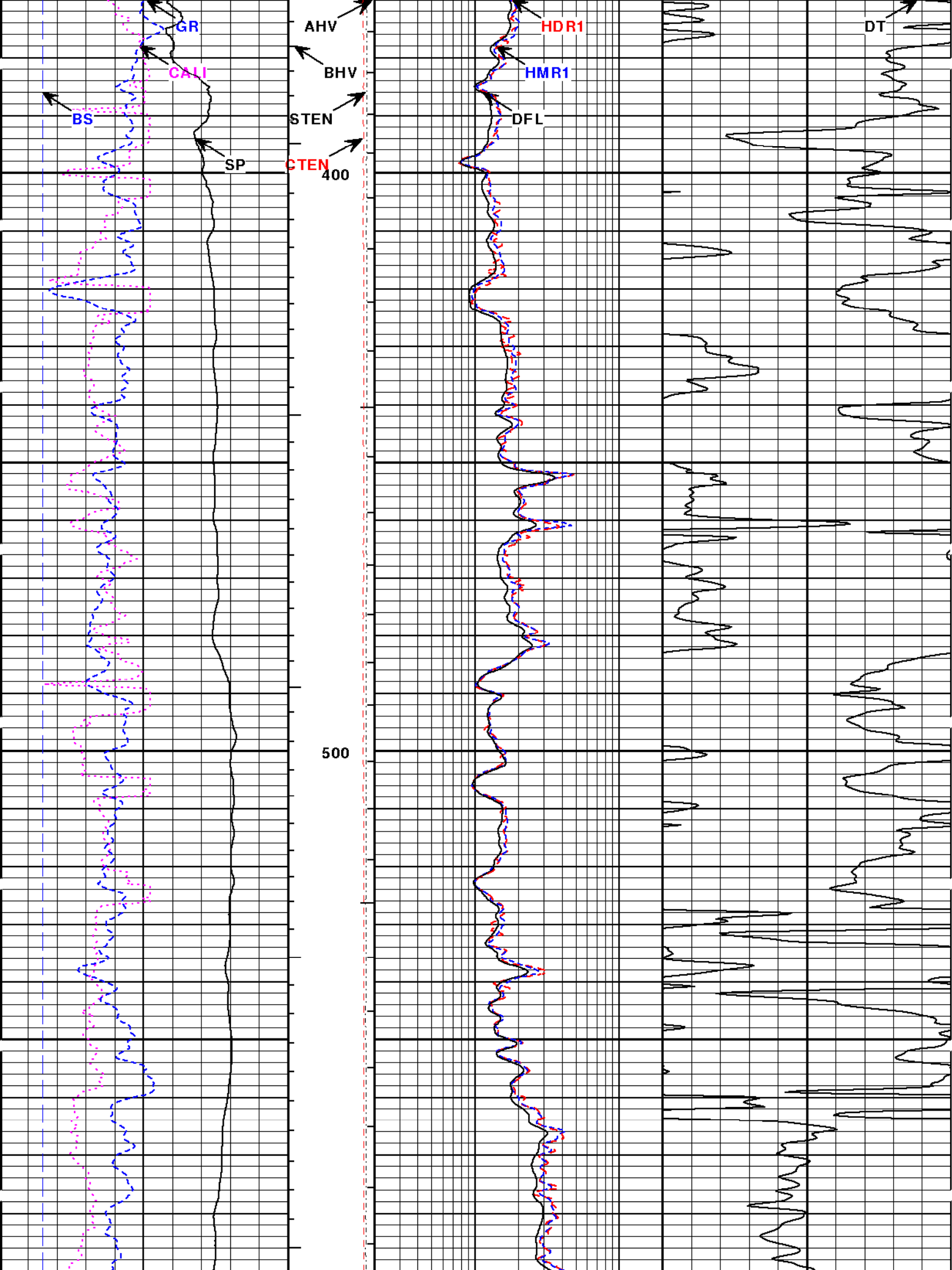
HALLIBURTON

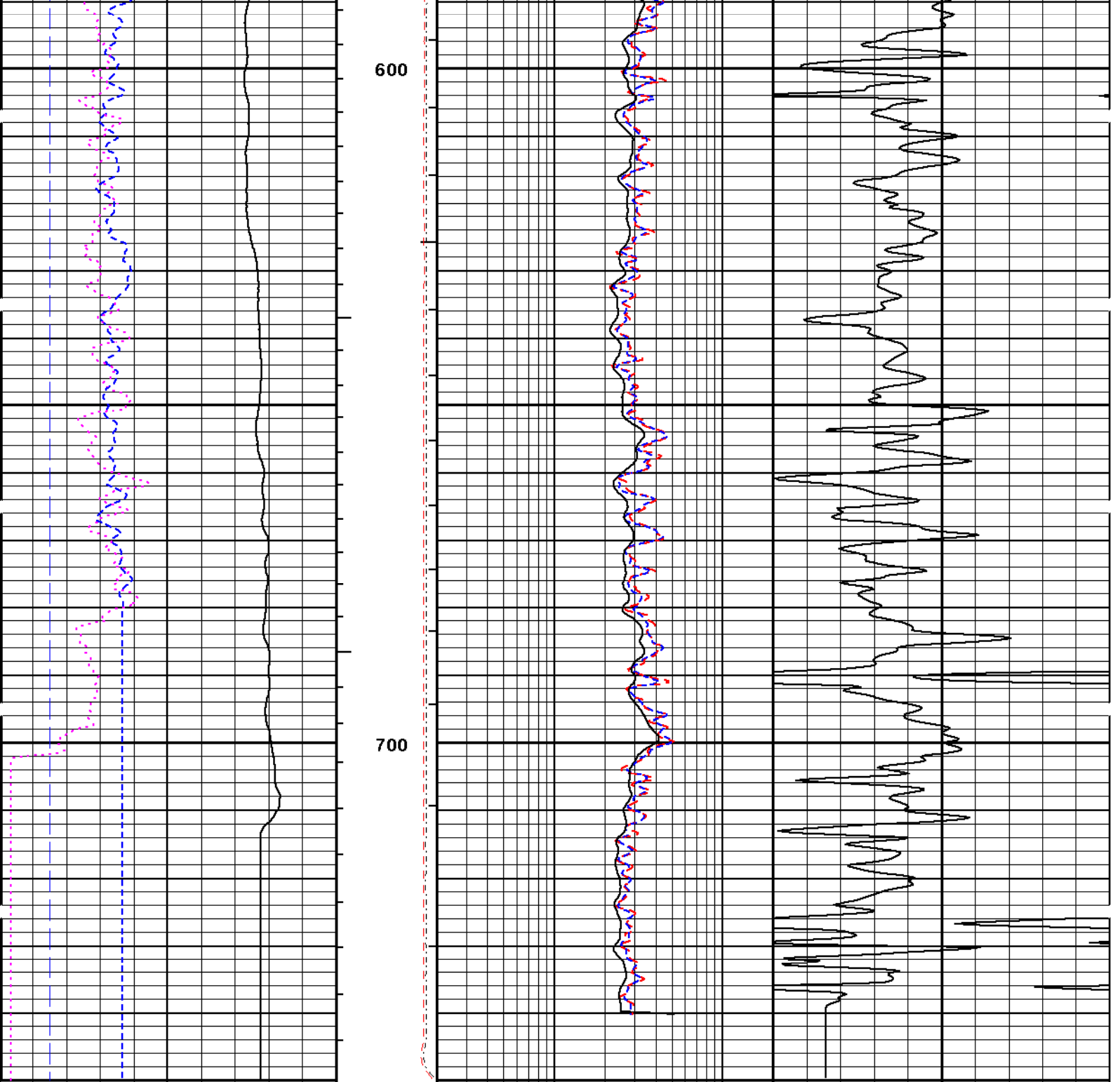
Version No: | hc:3.0
Data File: MER1.cls
Format File: DT.TIF.spc
Plot Time: 2008-09-21 11:59:20
Database Time: 10:39:43

Top Depth: 280.00
Bottom Depth: 750.83

GR			AHV		HDR1			DT		
0	API	150	100 FT3	0	0.2	OHMM	20	150	U/FT	50
CALI			BHV		HMR1					
16	INCH	26	0 FT3	100	0.2	OHMM	20			
BS			STEN		DFL					
16	INCH	26	10500	500	0.2	OHM	20			
SP			CTEN							
-]10[+			10000	0						
			1:240							
			FT.							







		1:240 FT.							
SP		CTEN							
-]10[+		10000 0							
BS		STEN		DFL					
16	INCH	26	10500 500	0.2	OHM	20			
CALI		BHV		HMR1					
16	INCH	26	0 FT3 100	0.2	OHMM	20			
GR		AHV		HDR1		DT			
0	API	150	100 FT3 0	0.2	OHMM	20	150	U/FT	50

HALLIBURTON

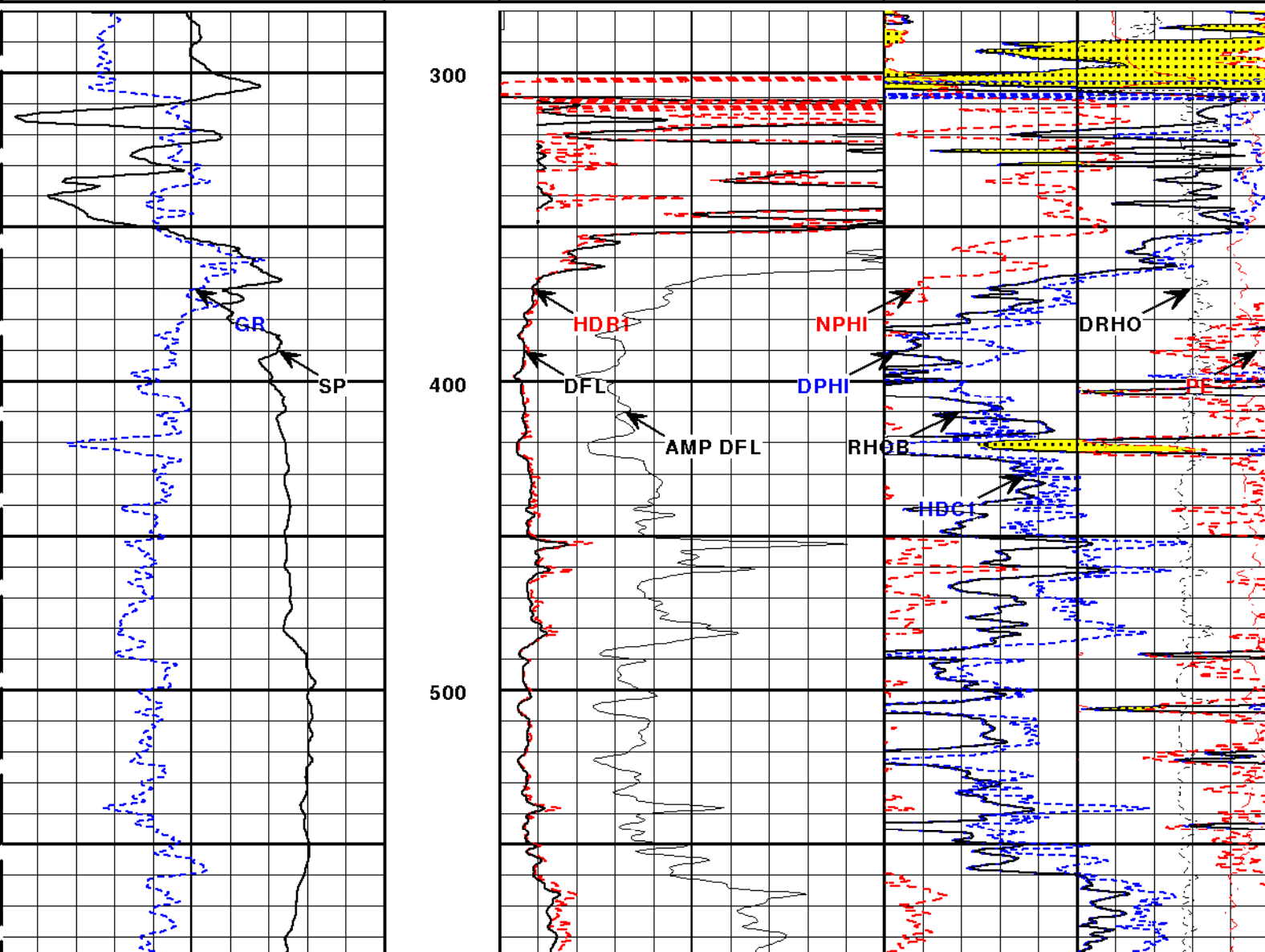
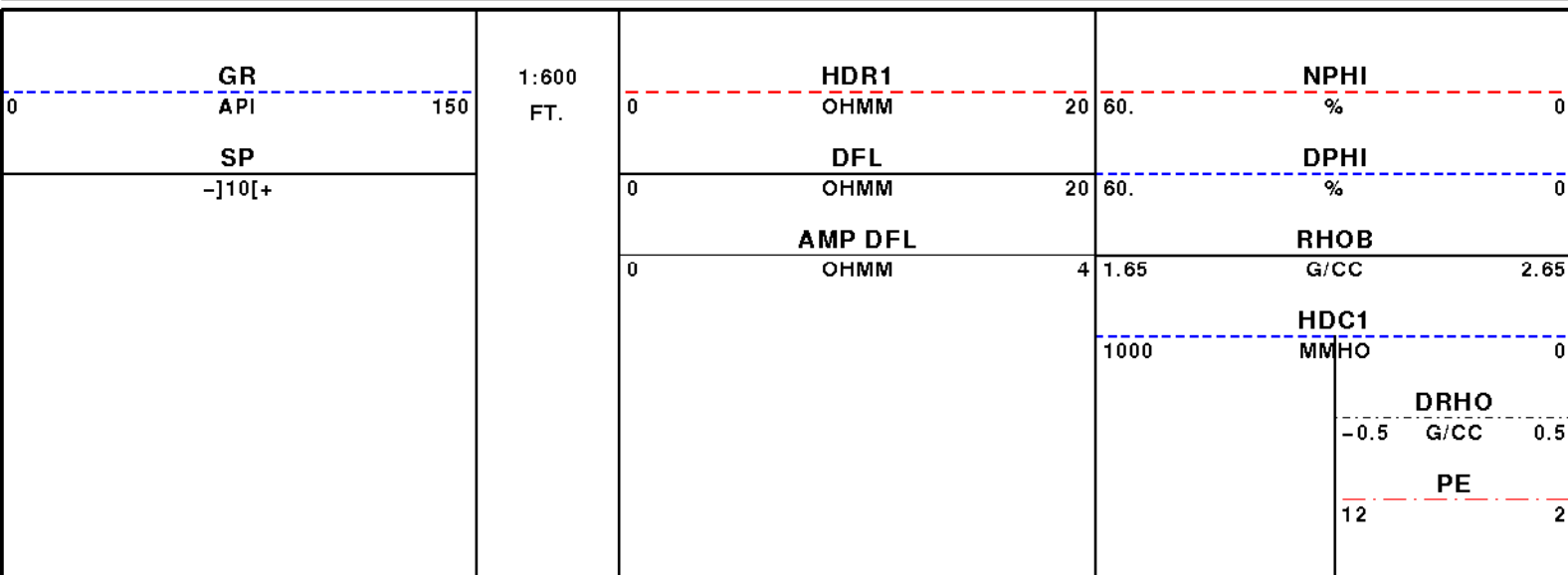
Format File: DT.TIF.spc
Plot Time: 2008-09-21 11:59:21
Database Time: 10:39:43

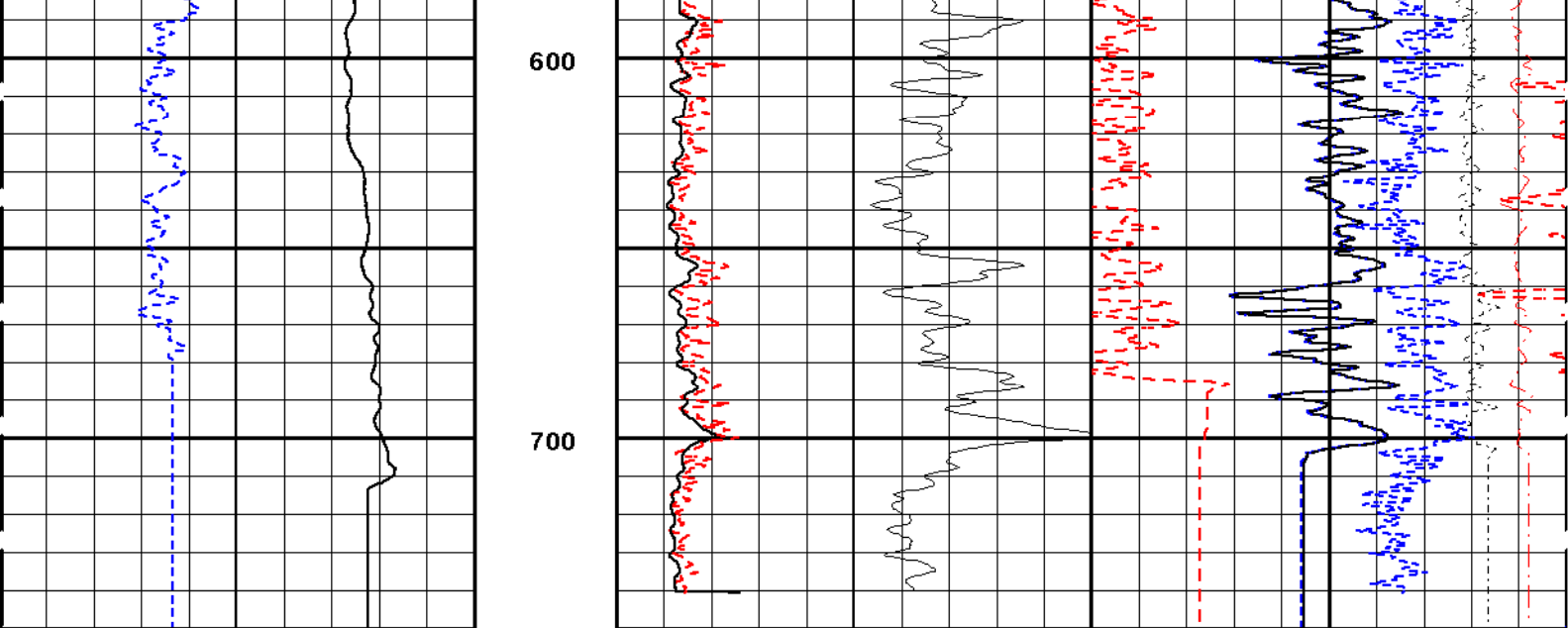
Top Depth: 280.00
Bottom Depth: 750.83

HALLIBURTON

Version No: | hc:3.0
Data File: MER1.cls
Format File: 2T.spc
Plot Time: 2008-09-21 11:56:49
Database Time: 10:39:43

Top Depth: 280.00
Bottom Depth: 750.83





						PE	
						12	2
						DRHO	
						-0.5	0.5
						HDC1	
						1000	0
						MMHO	
						RHOB	
						G/CC	2.65
						DPHI	
						%	0
						NPHI	
						%	0
						AMP DFL	
						0	4
						OHMM	
						1.65	2.65
						DFL	
						0	20
						OHMM	
						60.	0
						HDR1	
						0	20
						OHMM	
						60.	0
						SP	
						-]10[+	
						GR	
						API	150
						1:600	
						FT.	

HALLIBURTON

Version No: | hc:3.0
Data File: MER1.cls
Format File: 2T.spc
Plot Time: 2008-09-21 11:56:51
Database Time: 10:39:43

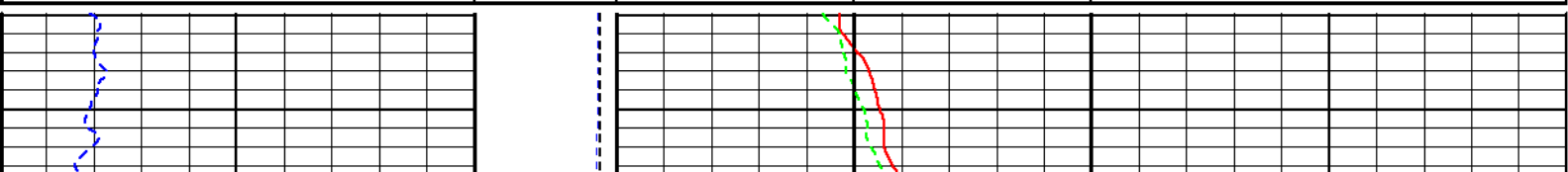
Top Depth: 280.00
Bottom Depth: 750.83

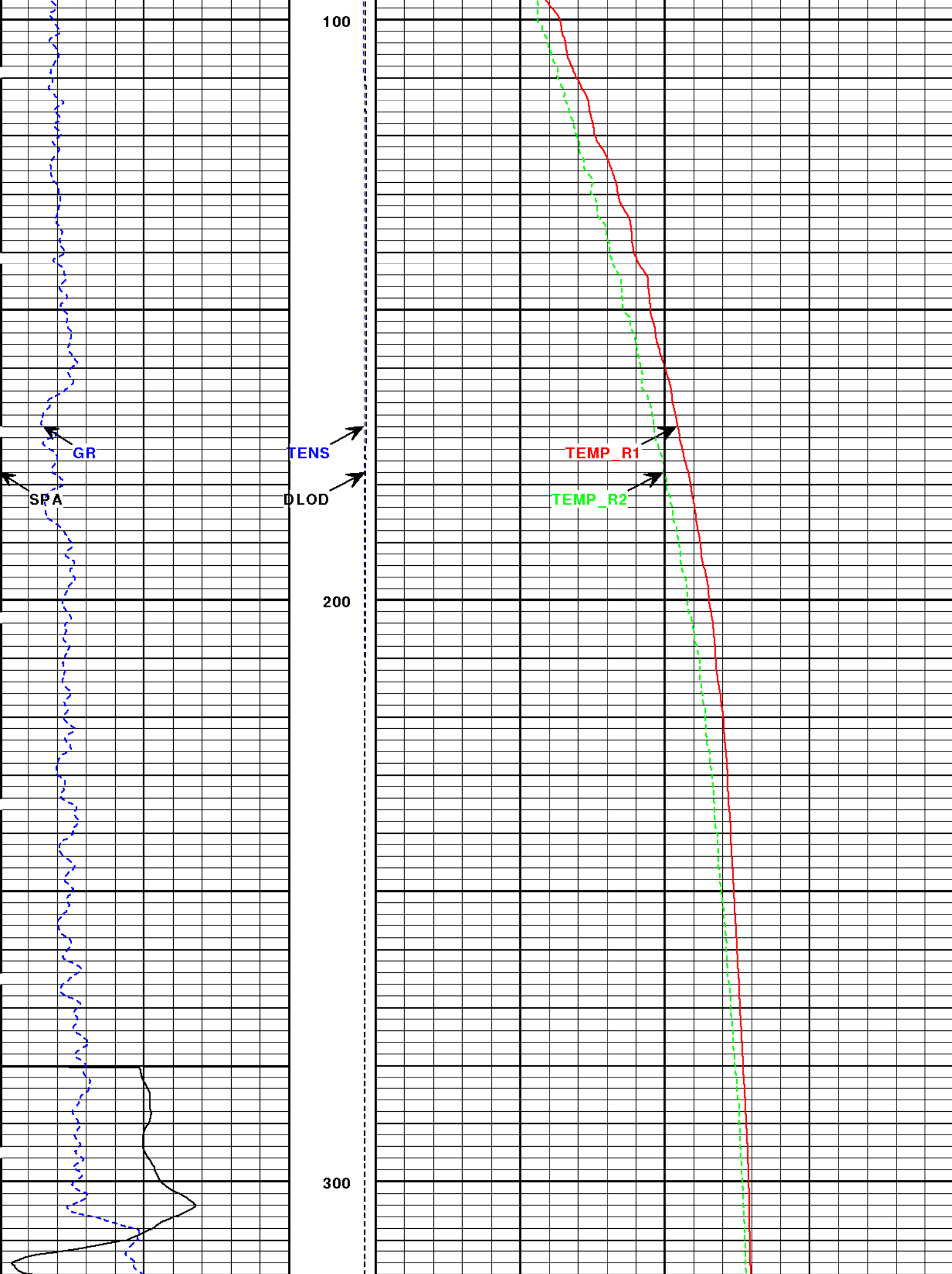
HALLIBURTON

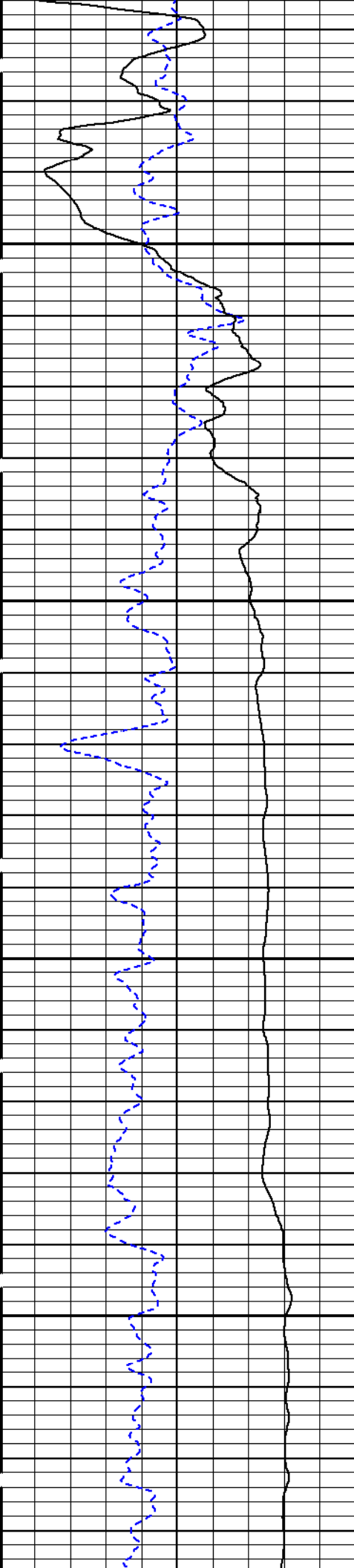
Version No: | hc:3.0
Data File: MER1.cls
Format File: TEMP.TIF.spc
Plot Time: 2008-09-21 11:57:50
Database Time: 10:39:43

Top Depth: 80.00
Bottom Depth: 750.83

				TEMP_R1	
				DEGF	
				150	250
				TEMP_R2	
				DEGF	
				150	250
				GR	
				API	
				150	
				SPA	
				-][+	
				TENS	
				DL	
				10000	
				0	
				1:240	
				FT.	

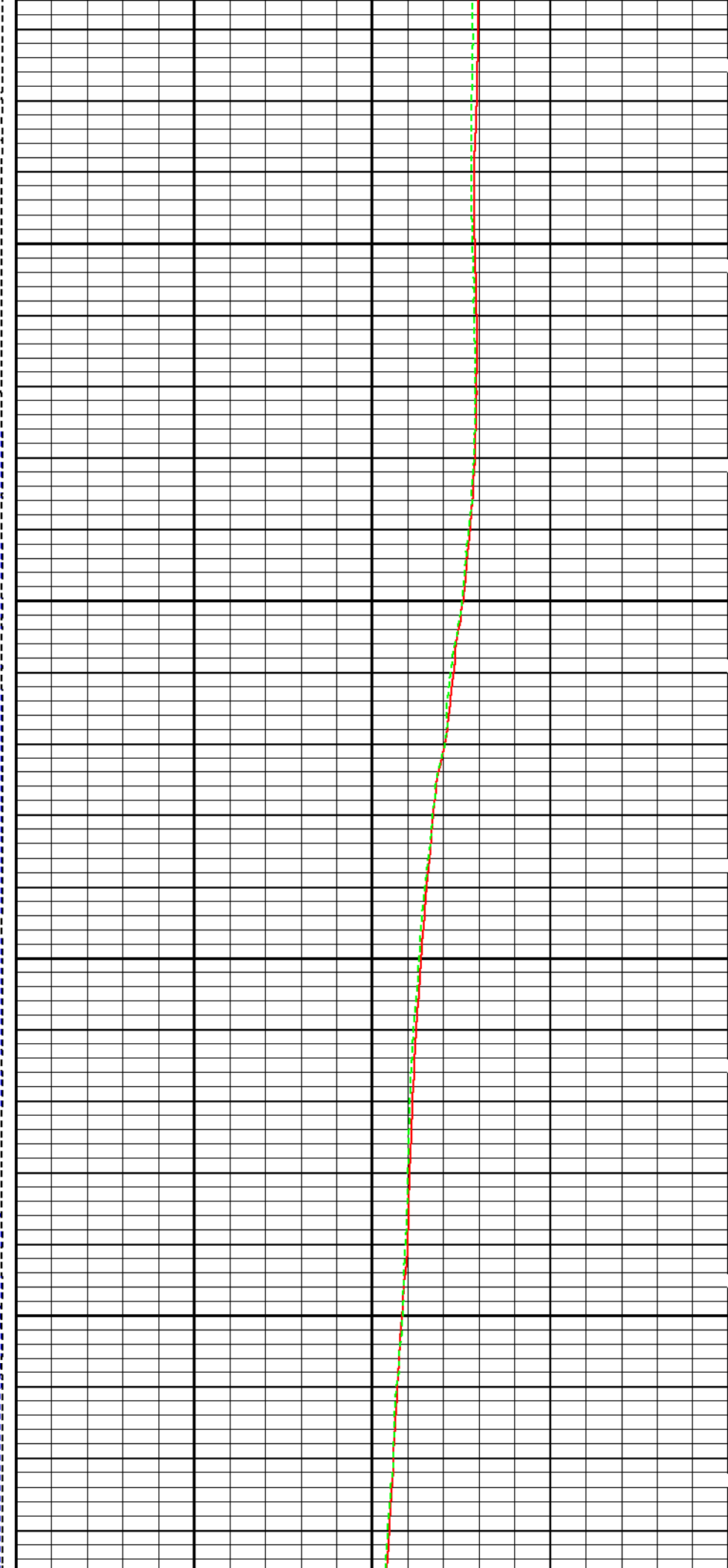


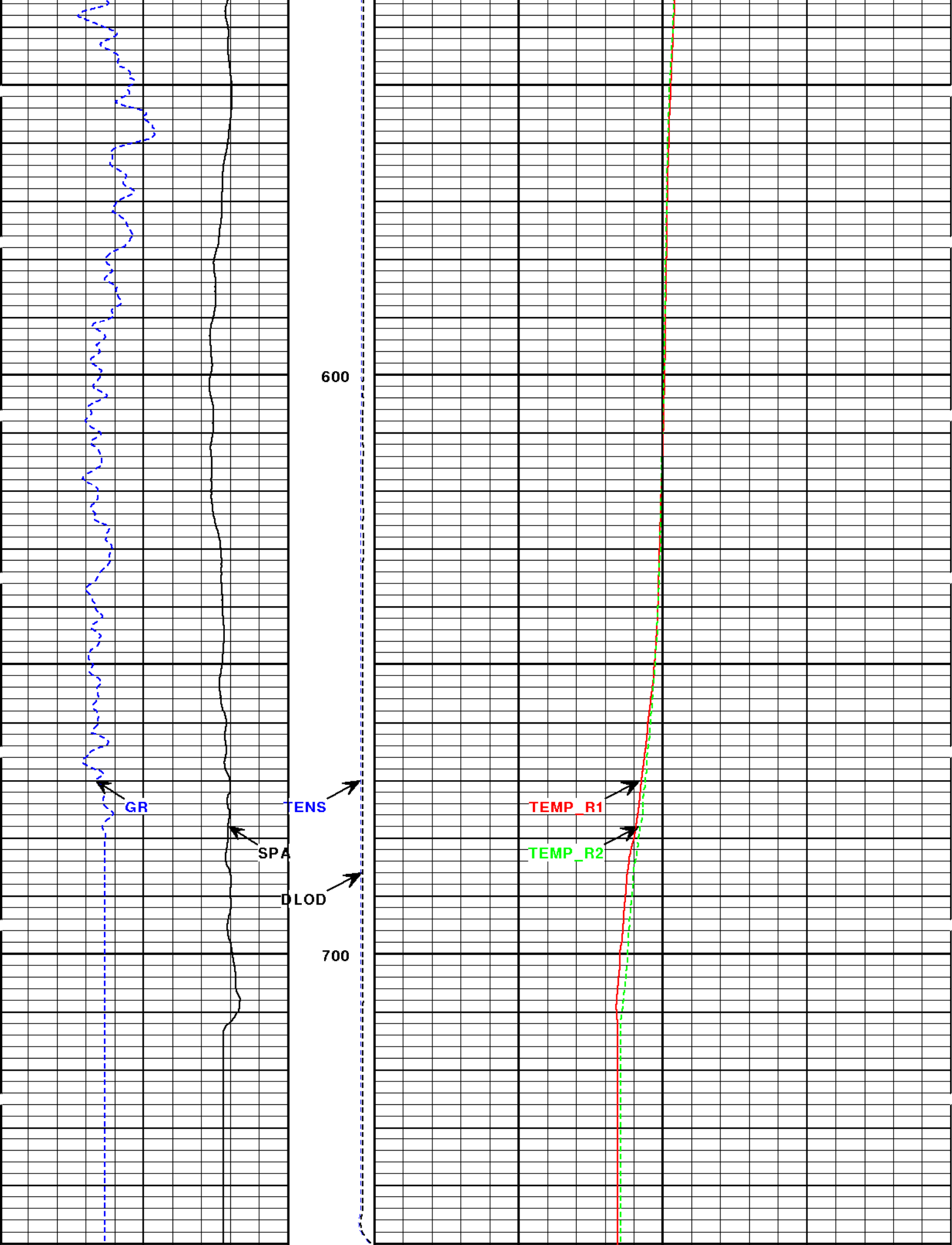




400

500





		1:240 FT. DLOD			TEMP_R2	
SPA	-][+	10000	0	150	DEGF	250
GR		TENS			TEMP_R1	
API	150	10000	0	150	DEGF	250

Version No: hc:3.0	
Data File: MER1.cls	
Format File: TEMP.TIF.spc	
Plot Time: 2008-09-21 11:57:52	
Database Time: 10:39:43	Top Depth: 80.00
	Bottom Depth: 750.83

COMPANY	VULCAN POWER CO.		
WELL	56A-14		
FIELD	SALT WELLS		
COUNTY	CHURCHILL	STATE	NV

HALLIBURTON	HIGH RESOLUTION SPECRAL DENSITY DUAL SPACED NEUTRON 5",2"=100'
-------------	---