

Schlumberger

UNCOMPENSATED FORMATION
DENSITY BEFORE GAS SATURATION

COUNTY _____
FIELD _____
LOCATION _____
WELL _____
COMPANY _____

COMPANY S. G. & G. IDAHO, INC.
WELL FUEL # 1
FIELD WYLOCAT
COUNTY BUTTE STATE IDAHO
API SERIAL NO. _____ SEC. 1 TWP. 3N RANGE 29E
Other Services:
DIL _____
BHC/R/HTI _____
POC/CVL/GA _____
HRT _____
RGT _____

Permanent Datum: GROUND LEVEL : Elev.: 4874.8
Log Measured From GL : _____ Ft. Above Perm. Datum
Drilling Measured From GL : _____

Date	<u>3-29-79</u>				
Run No.	<u>THREE</u>				
Depth-Driller	<u>3516</u>				
Depth-Logger (Schl.)	<u>3514</u>				
Btm. Log Interval	<u>3512</u>				
Top Log Interval	<u>1290</u>				
Casing-Driller	<u>13 3/8 @ 3516</u>				
Casing-Logger	<u>3514</u>				
Bit Size	<u>1 7/8</u>				
Type Fluid in Hole	<u>WATER</u>				
Dens. Visc.					
pH					
Source of Sample					
Rm @ Meas. Temp.					
Rmf @ Meas. Temp.					
Rmc @ Meas. Temp.					
Source: Rmf Rmc					
Rm @ BHT					
Circulation Stopped	<u>3-28 @ 1400</u>				
Logger on Bottom	<u>3-29 @ 1900</u>				
ox. Rec. Temp.	<u>123</u>				
up. Location	<u>860 (EUSTN)</u>				
Recorded By	<u>Rooney</u>				
Checked By	<u>McMinn</u>				

HERE: The well name, location and borehole reference data were furnished by the customer.

Run No.	<u>THREE</u>	SCALE CHANGES			
Service Order No.	<u>40303</u>	Type Log	Depth	Scale Up Hole	Scale Down Hole
API Serial No.	<u>-</u>				
Fluid Level	<u>FULL</u>				
EQUIPMENT DATA		REMARKS:			
<u>SBC-JAB</u>	<u>684</u>	<u>13 3/8" 72" CASING</u>			
<u>PQC-G</u>	<u>65</u>				
<u>PQS-EC</u>	<u>59</u>				
<u>SET-106</u>	<u>606</u>				
<u>GER-J</u>	<u>8025</u>				
<u>NLM-88</u>	<u>178</u>				

CALIBRATION DATA	
Speed - F.P.M.	<u>30</u>
GR	BKG. CPS <u>44</u>
	Source CPS <u>197</u>

Tc	AUTO	
BEFORE	{ FFDC	323
	{ NFDC	579
AFTER	{ FFDC	327
	{ NFDC	581

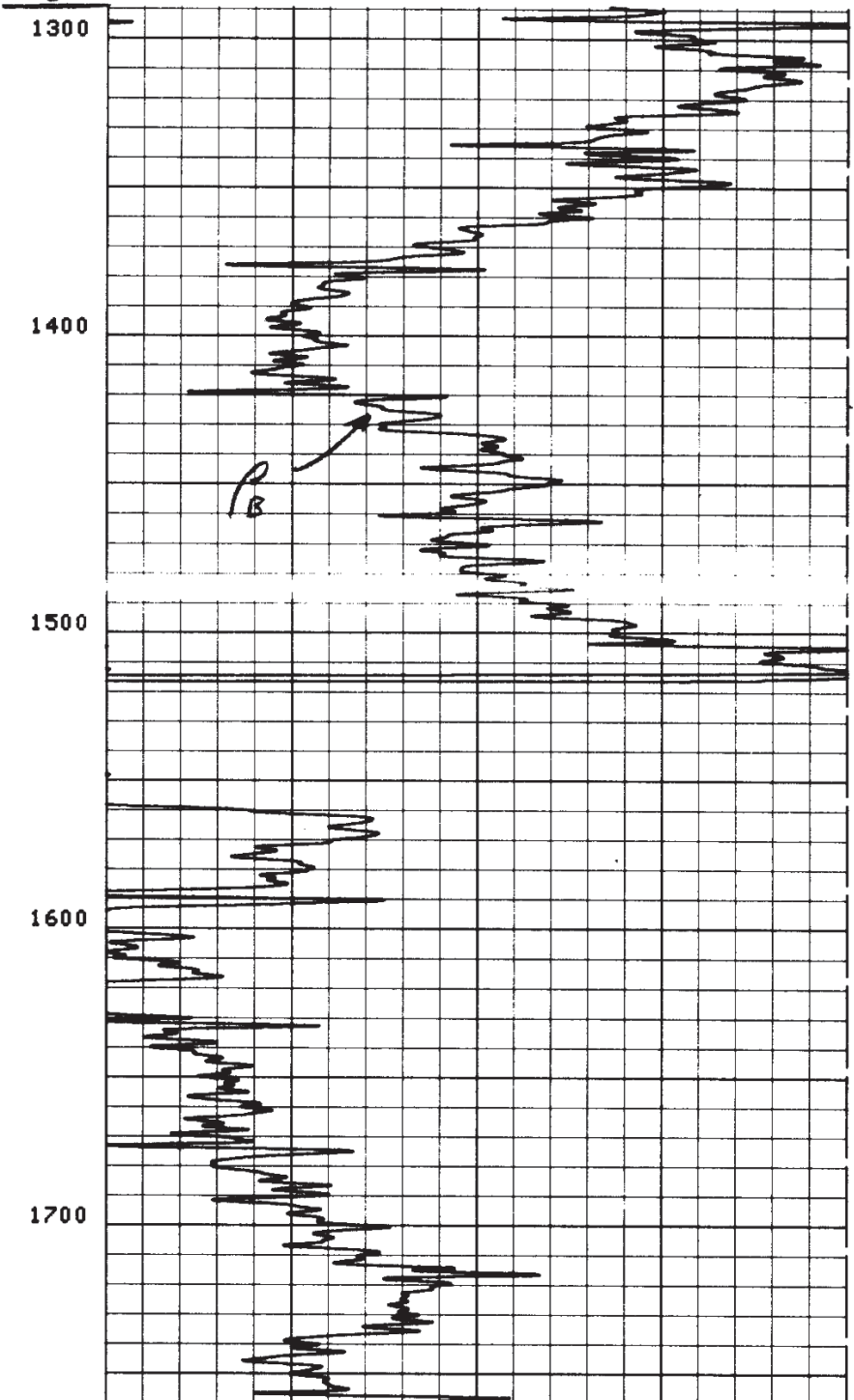
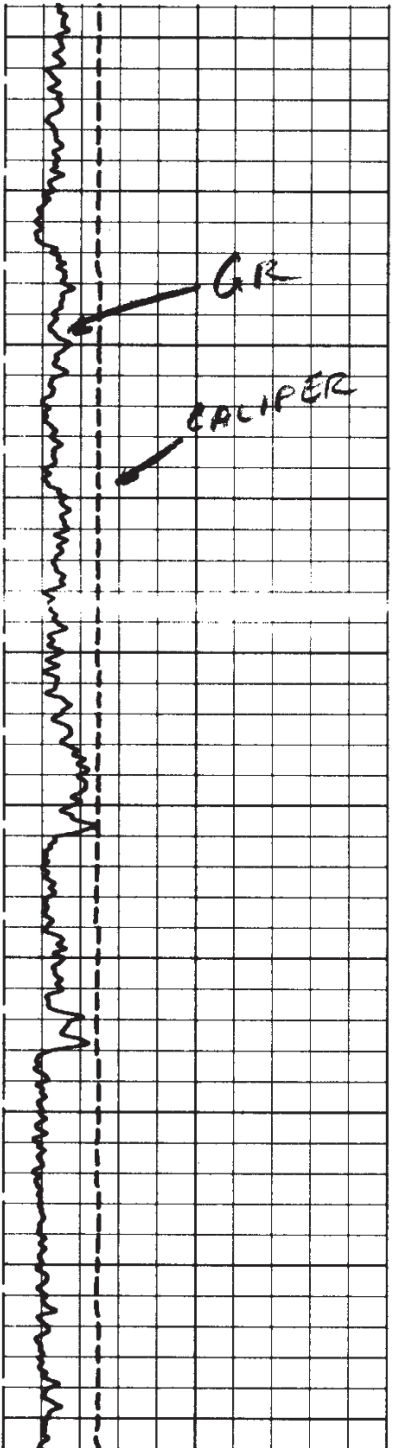
All interpretations are opinions based on inferences from electrical or other measurements and we cannot, and do not guarantee the accuracy or correctness of any interpretations, and we shall not, except in the case of gross or willful negligence on our part, be liable or responsible for any loss, costs, damages or expenses incurred or sustained by anyone resulting from any interpretation made by any of our officers, agents or employees. These interpretations are also subject to Clause 4 of our General Terms and Conditions as set out in our current Price Schedule.

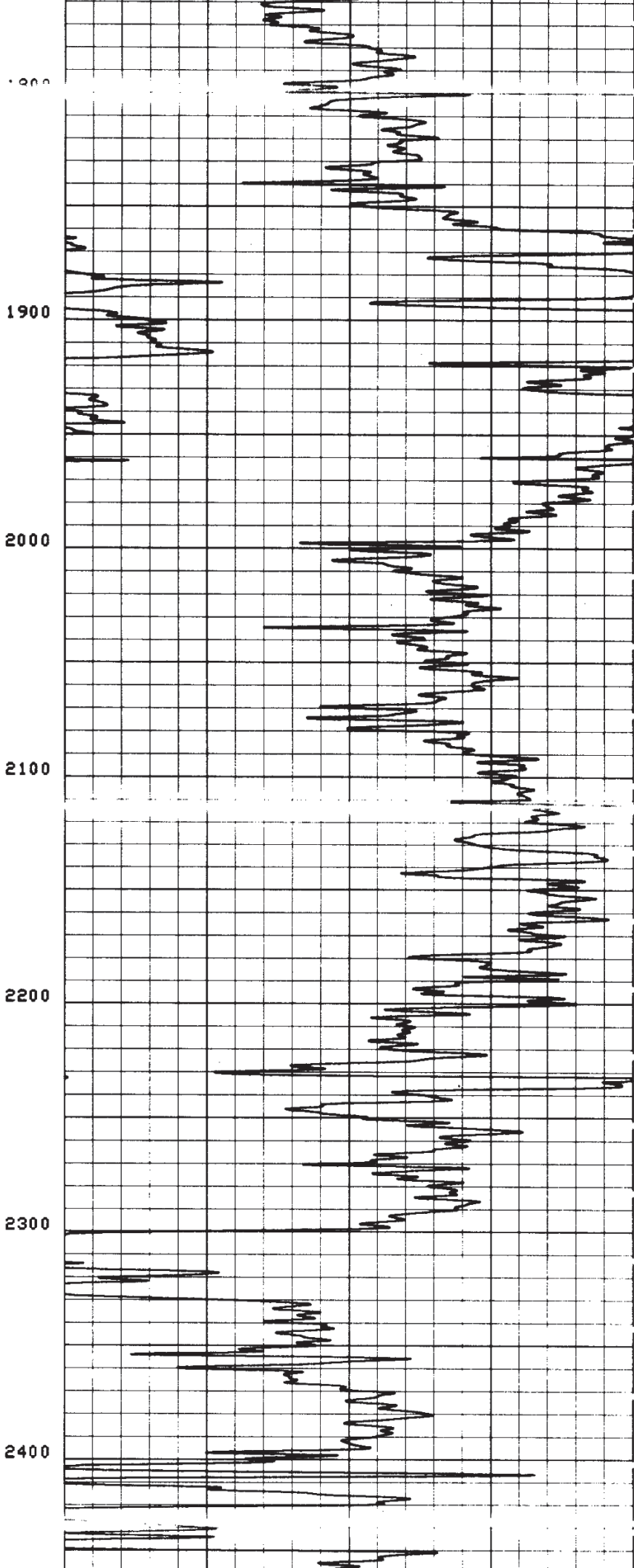
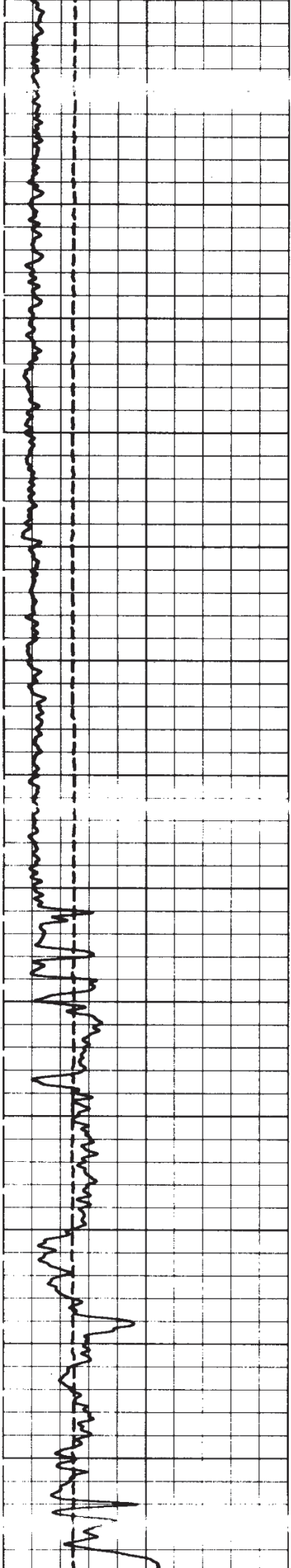
21
21

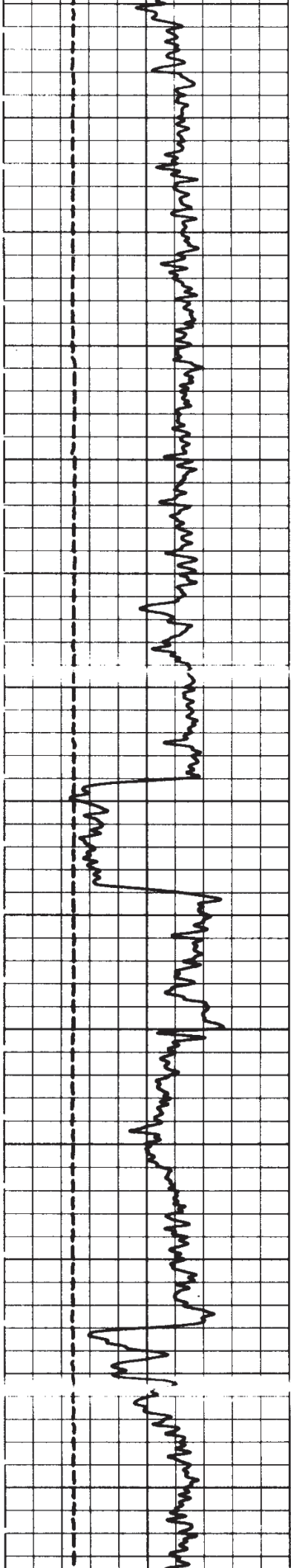
CALI(IN)	
10.00	20.00
GR (GAPI)	
0.0	150.0

RHOB(G/C3)	
2.000	3.000

21
21
21
19
19
19
CR







2500

2600

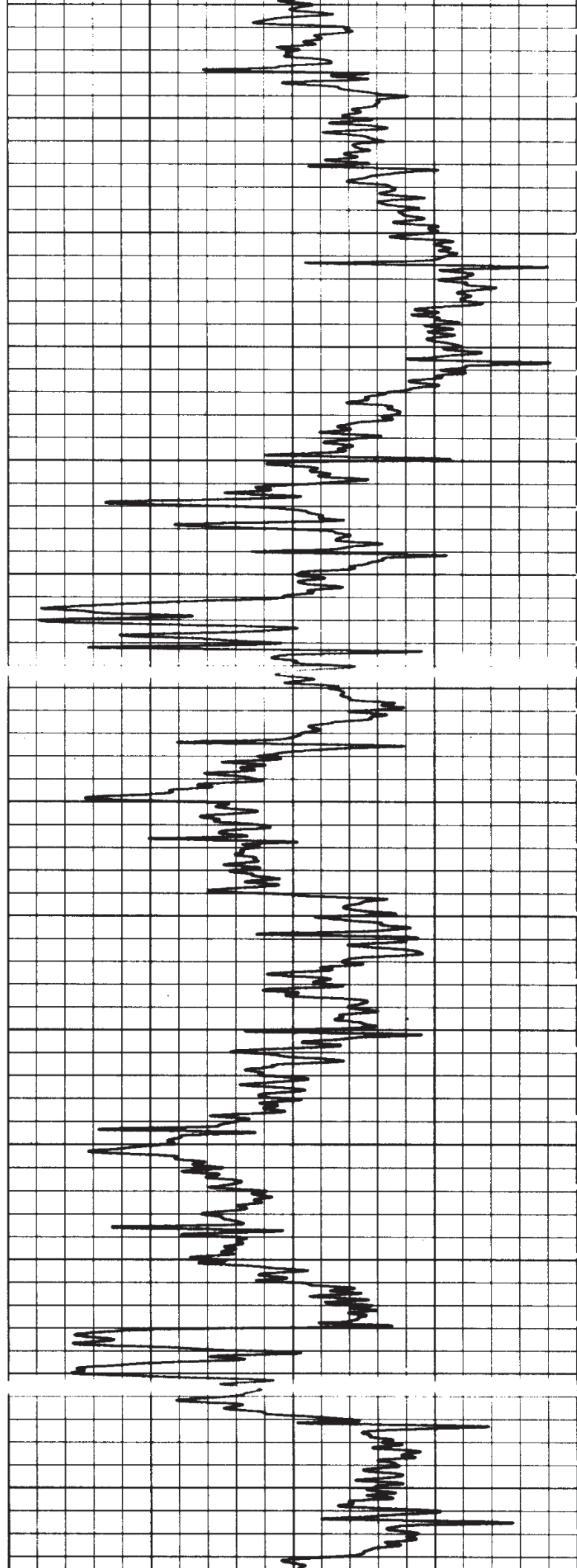
2700

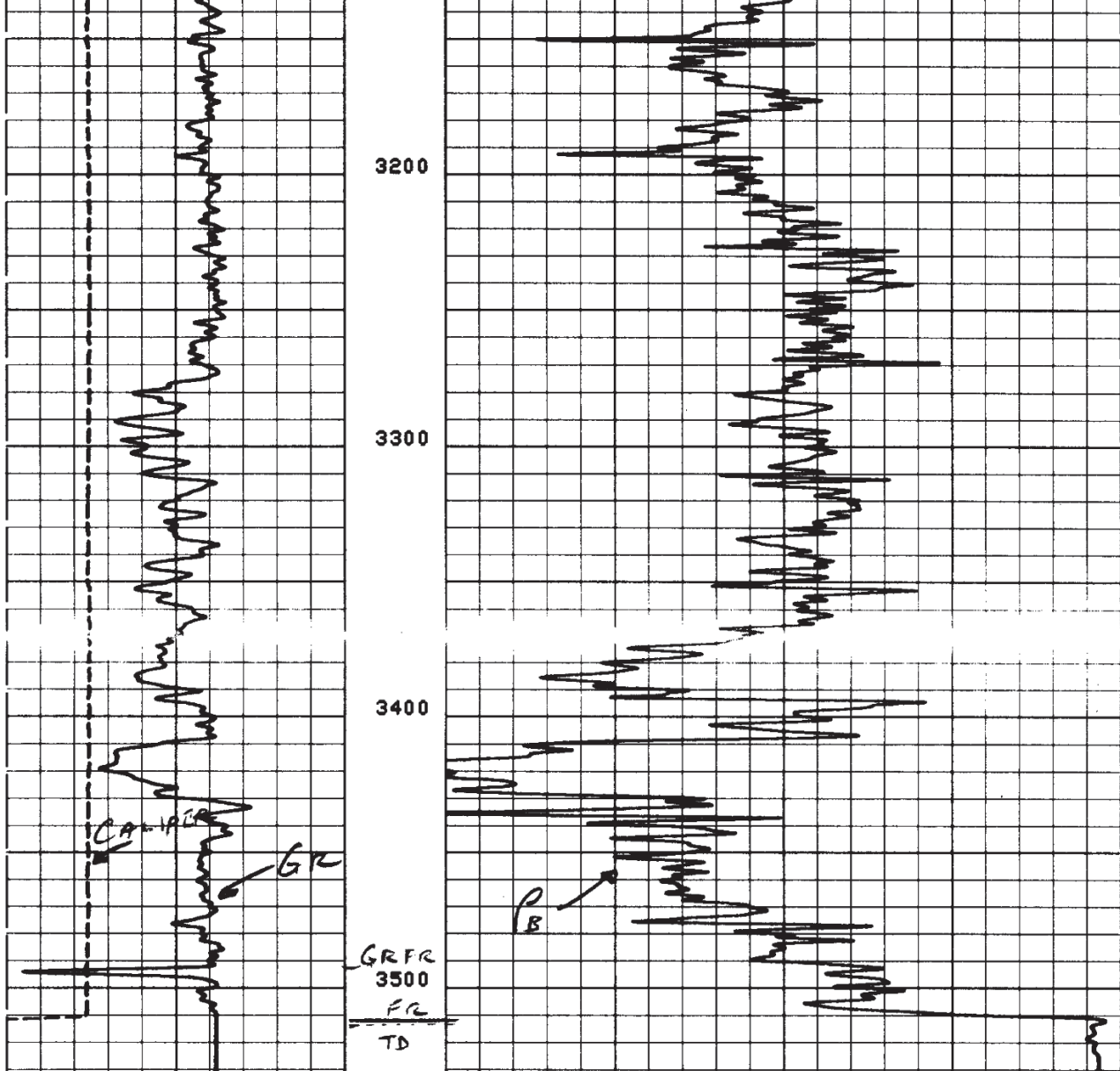
2800

2900

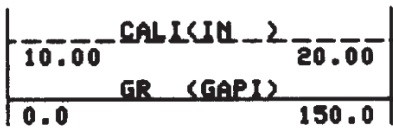
3000

3100

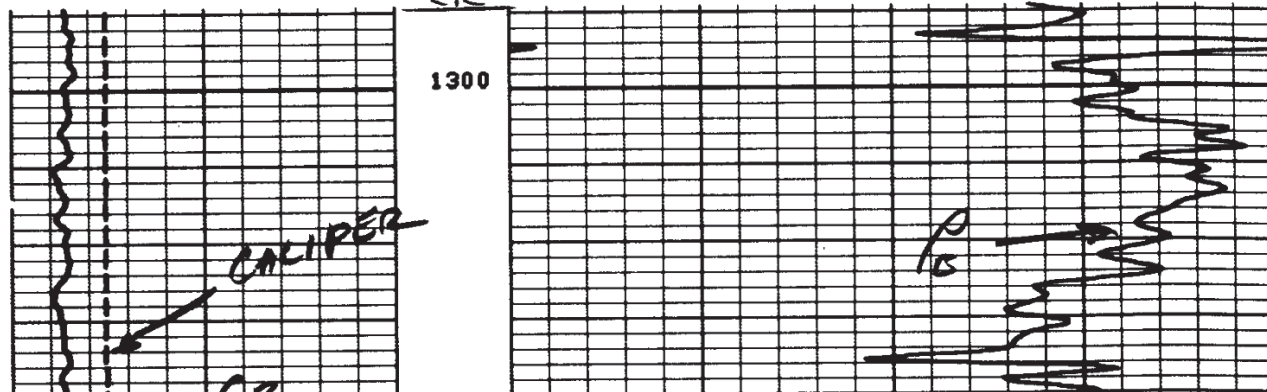


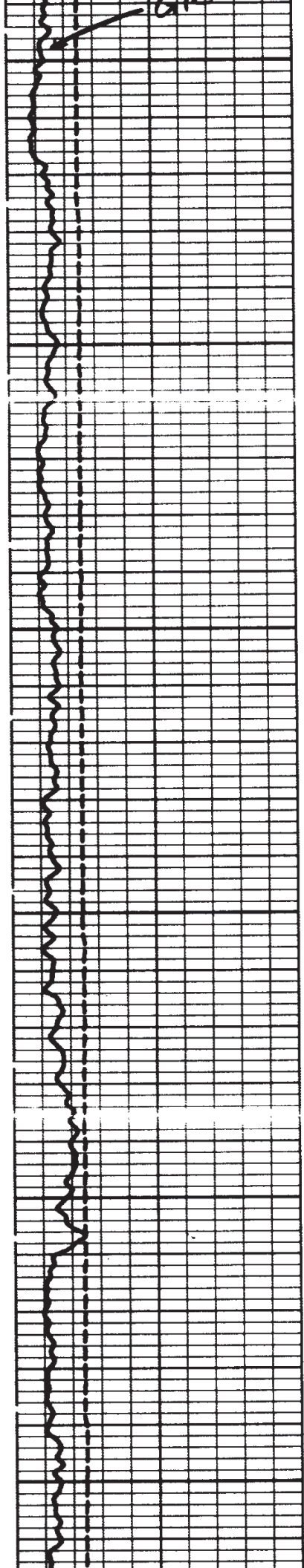


19
19
18



21
21
21
19
19
17

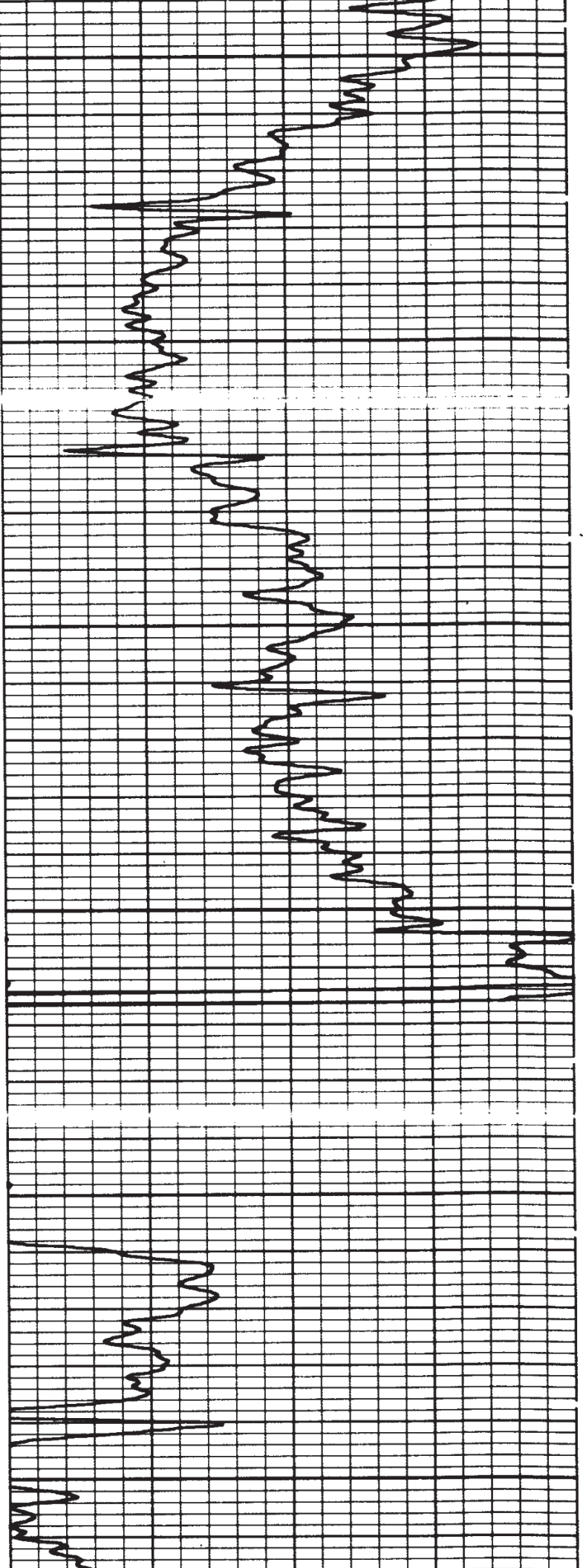


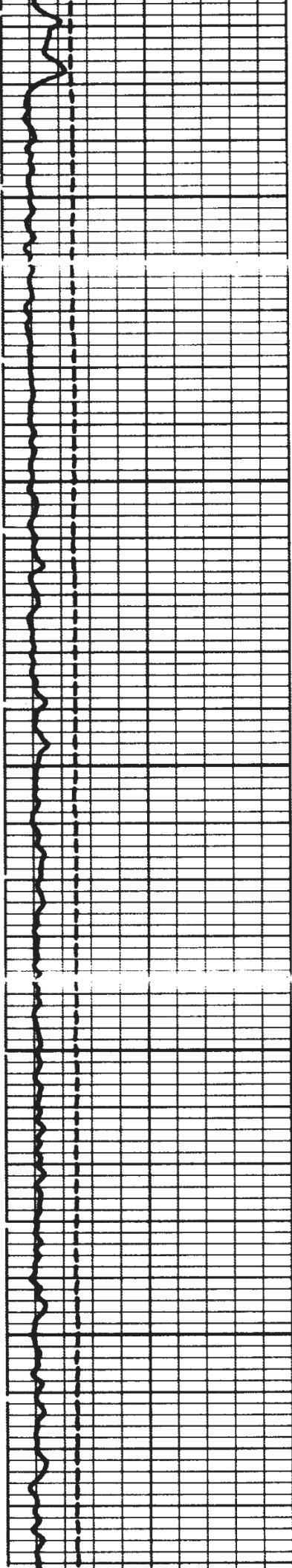


1400

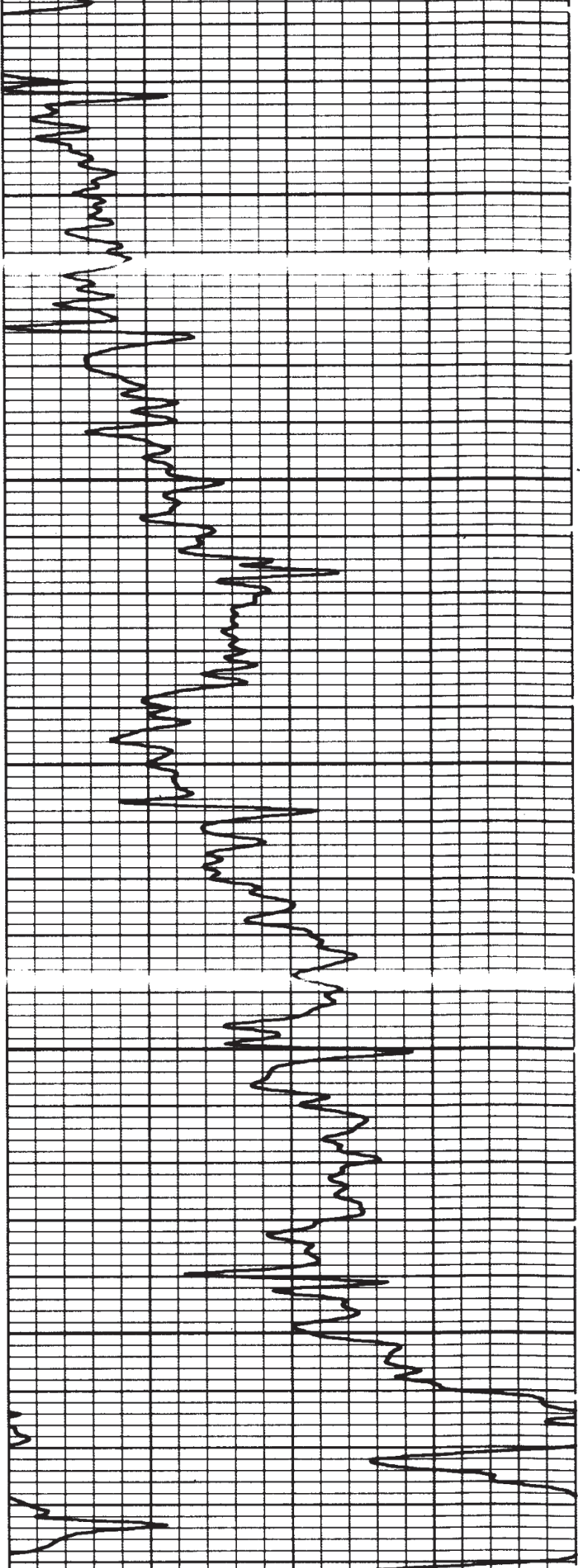
1500

1600

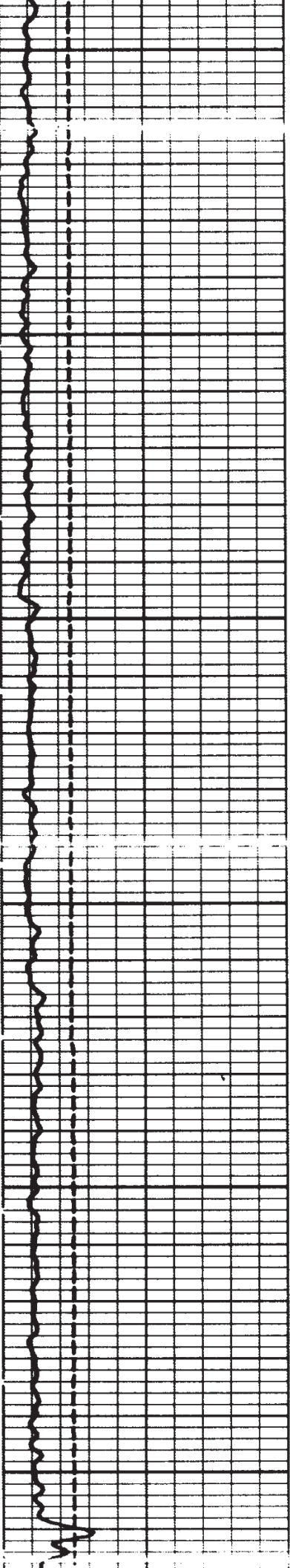




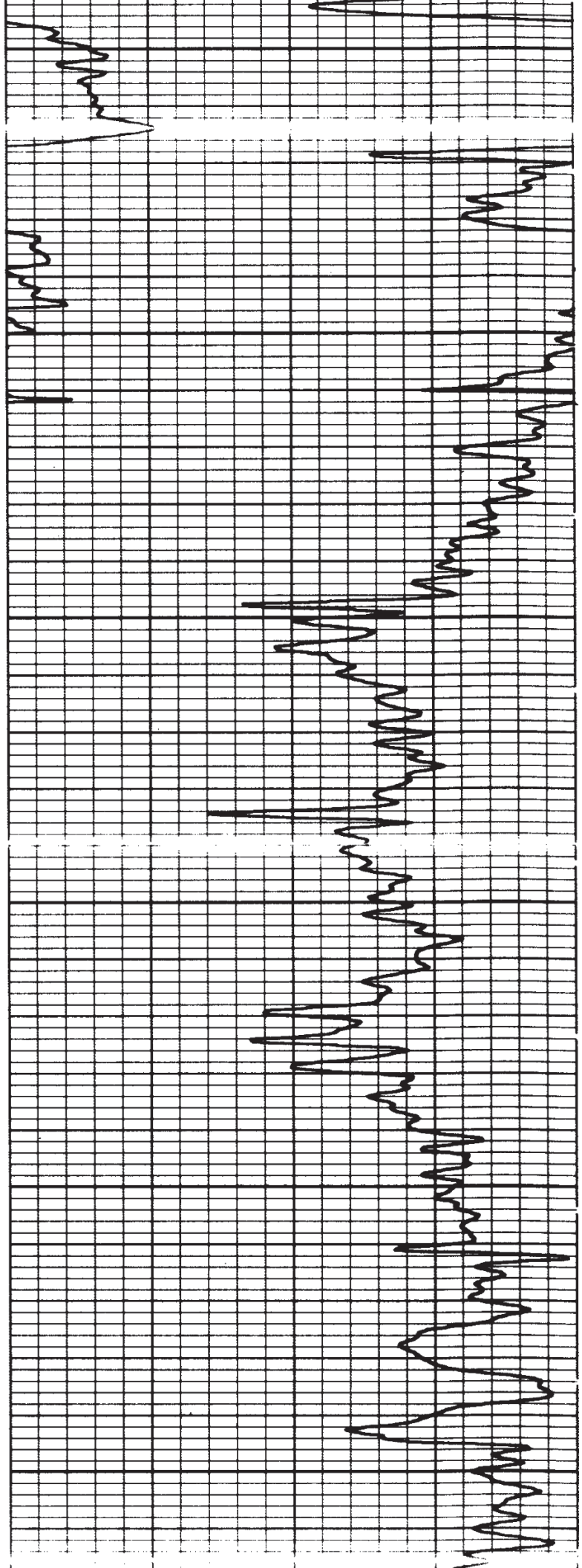
1700



1800

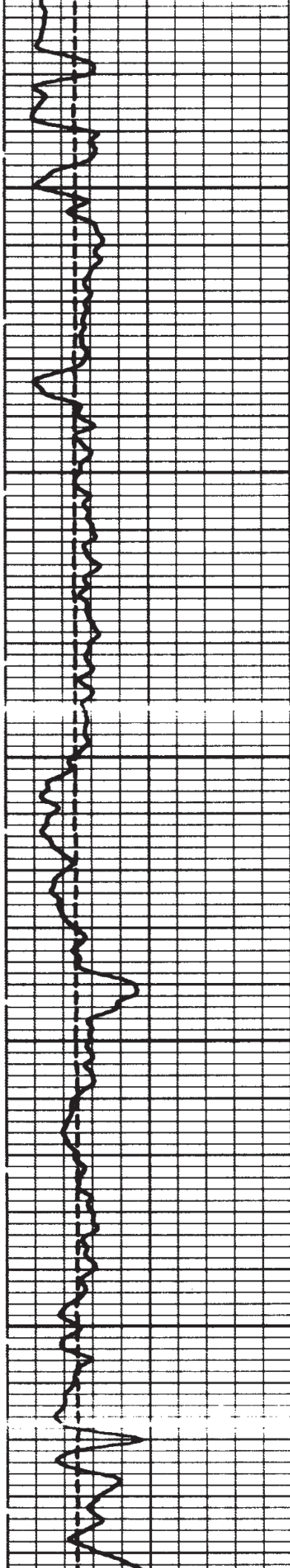


1900

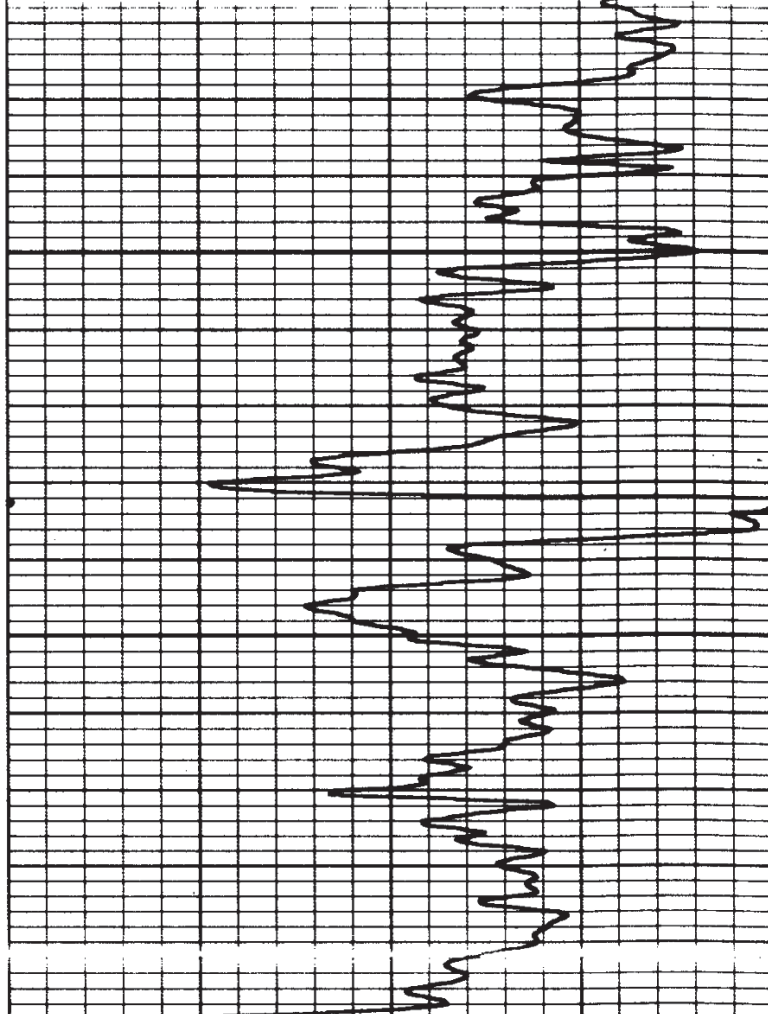


2000

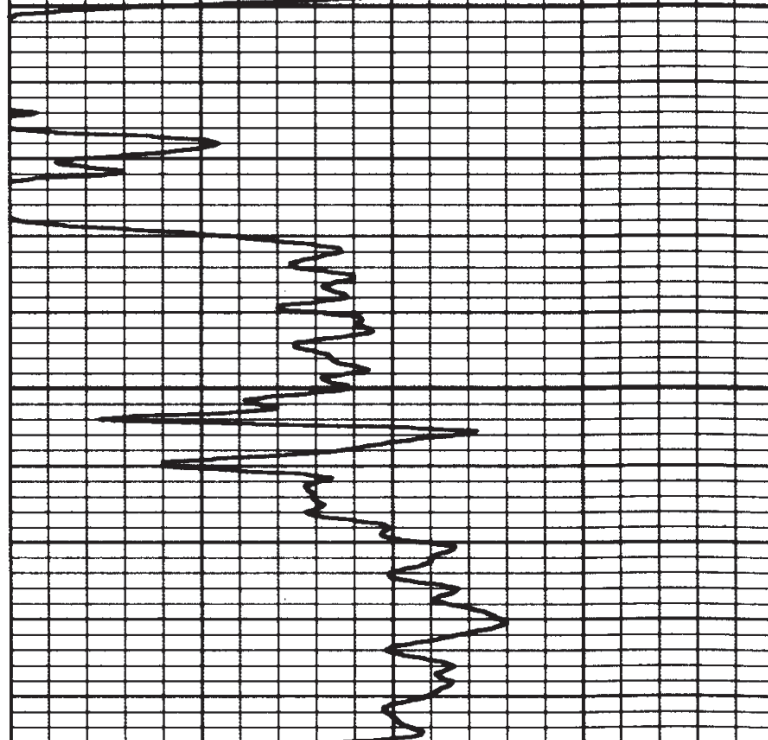
2100



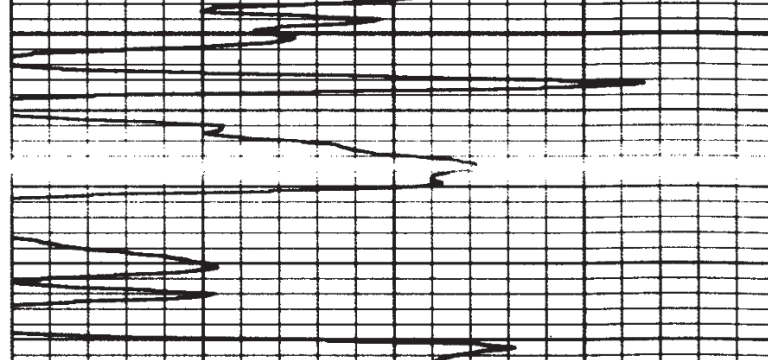
2200

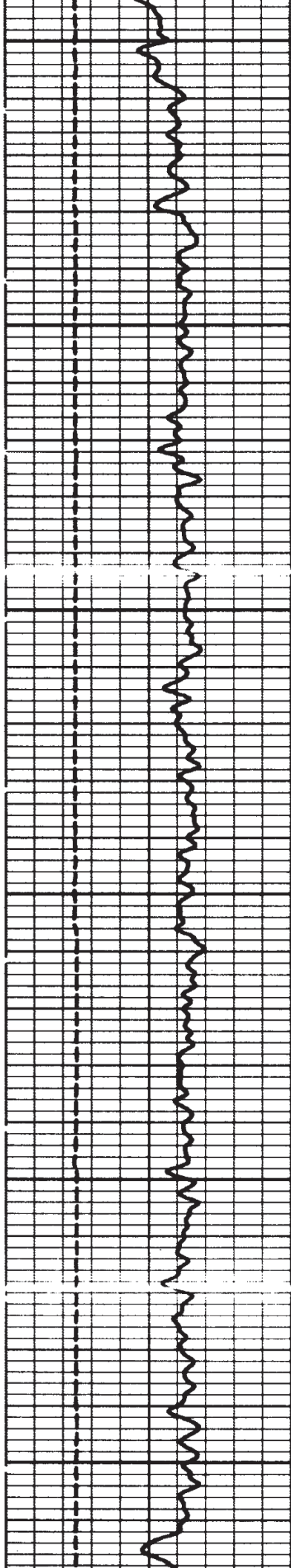


2300



2400

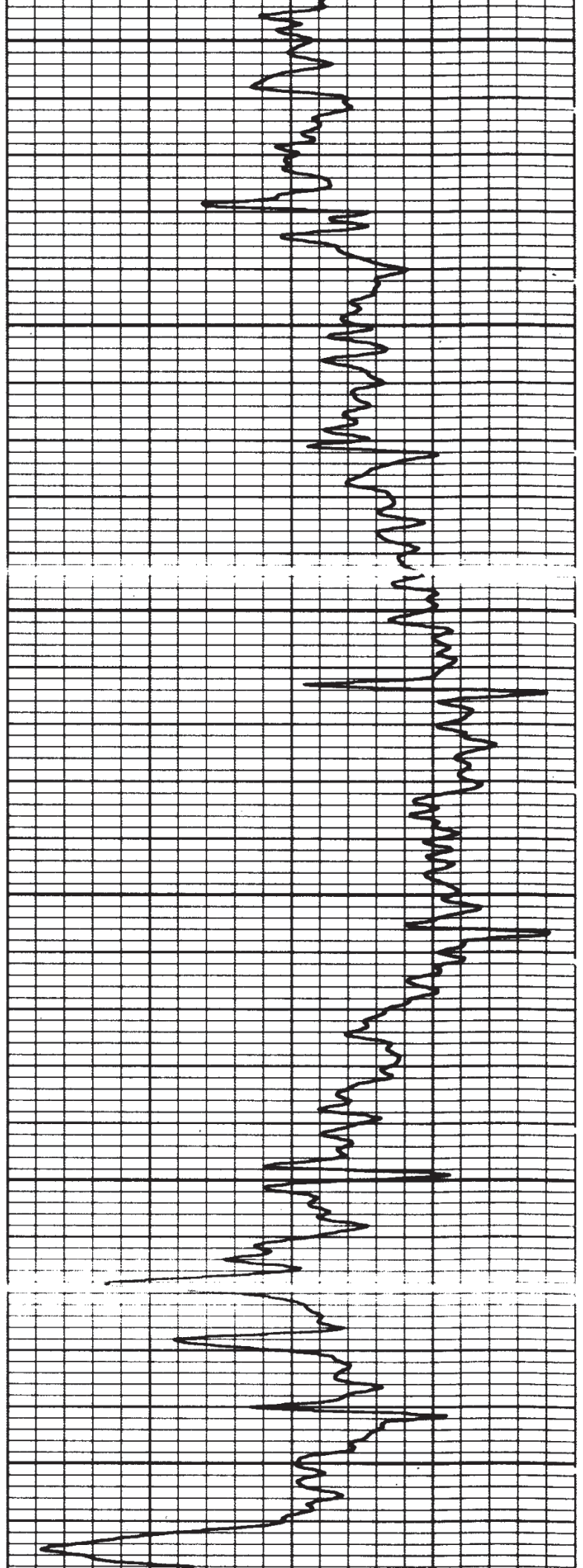


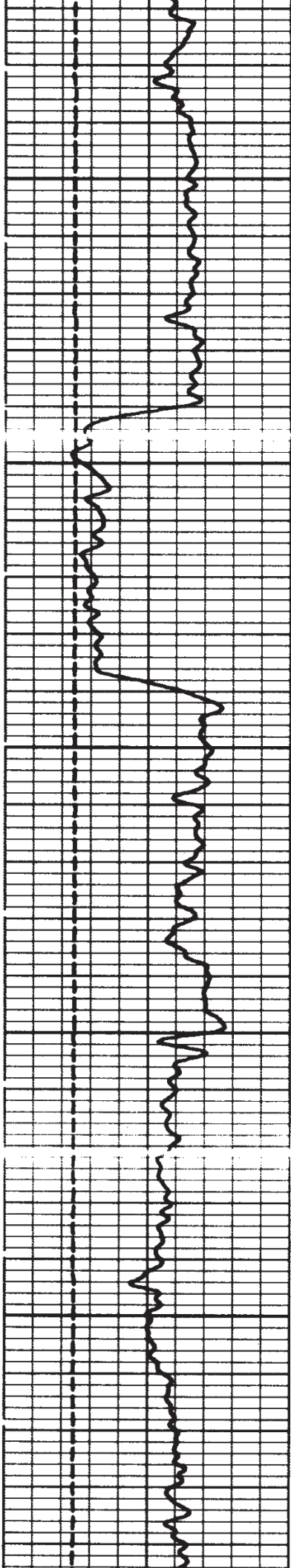


2500

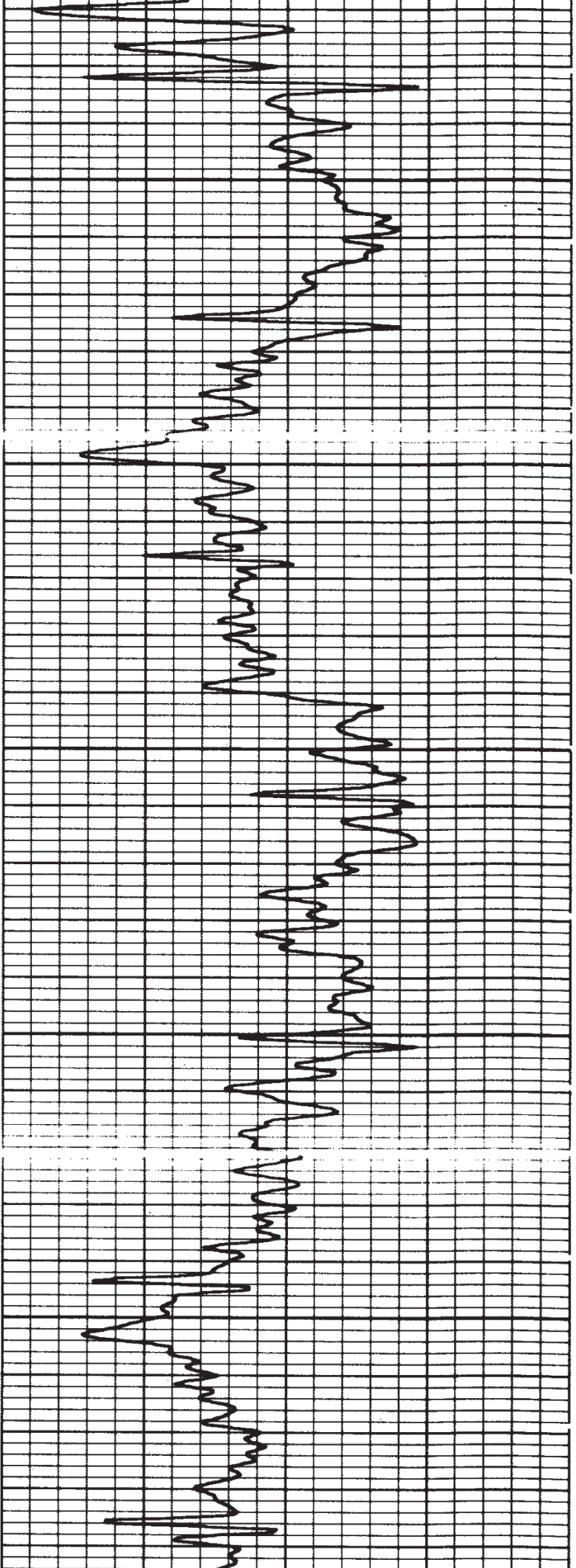
2600

2700

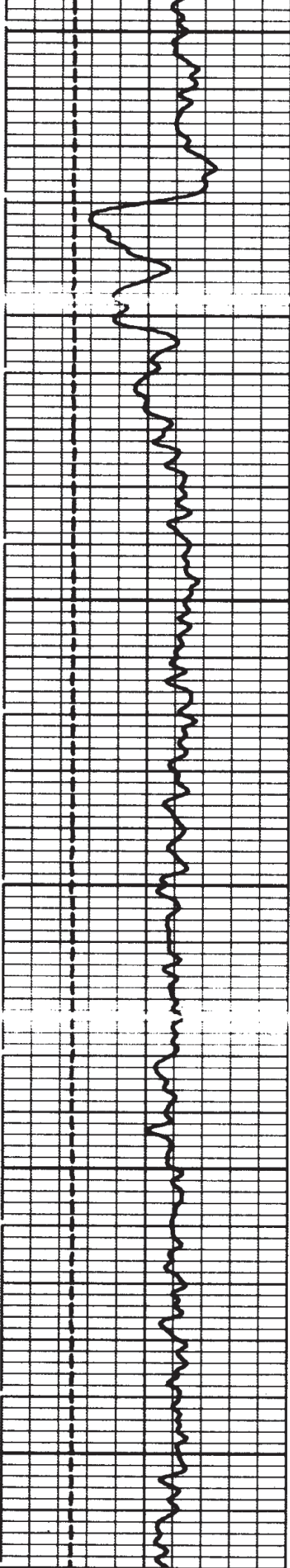




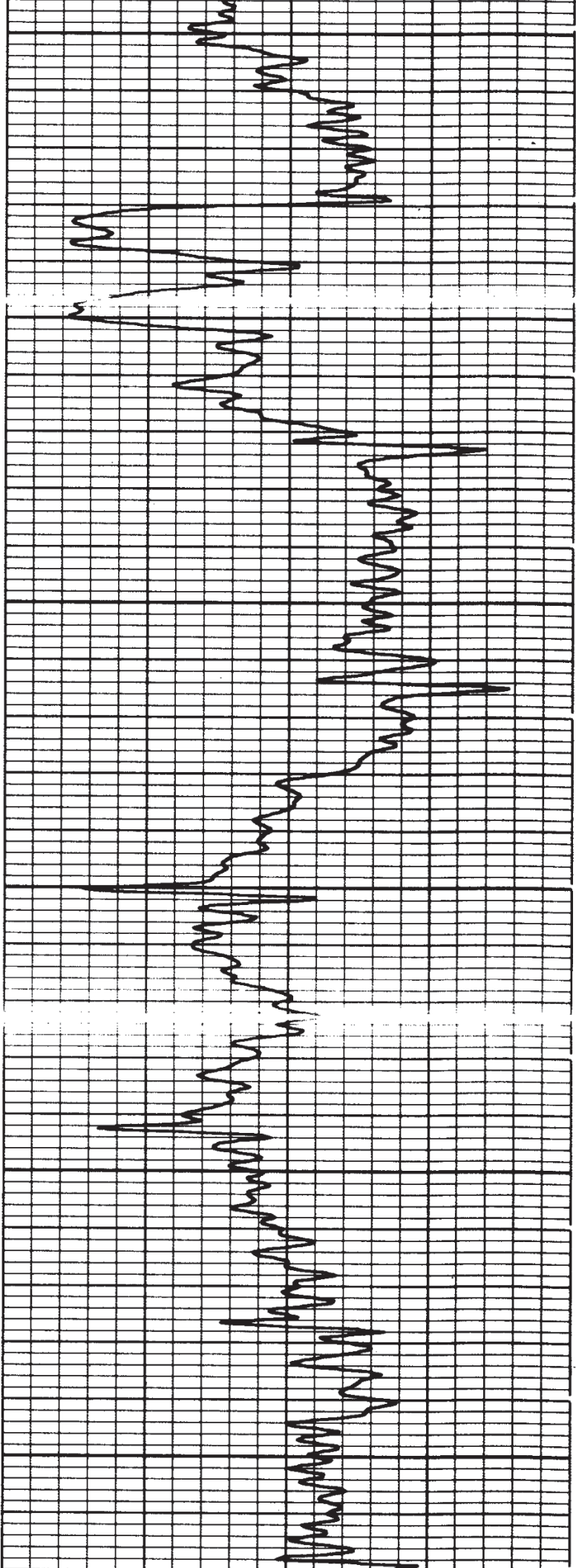
2800



2900

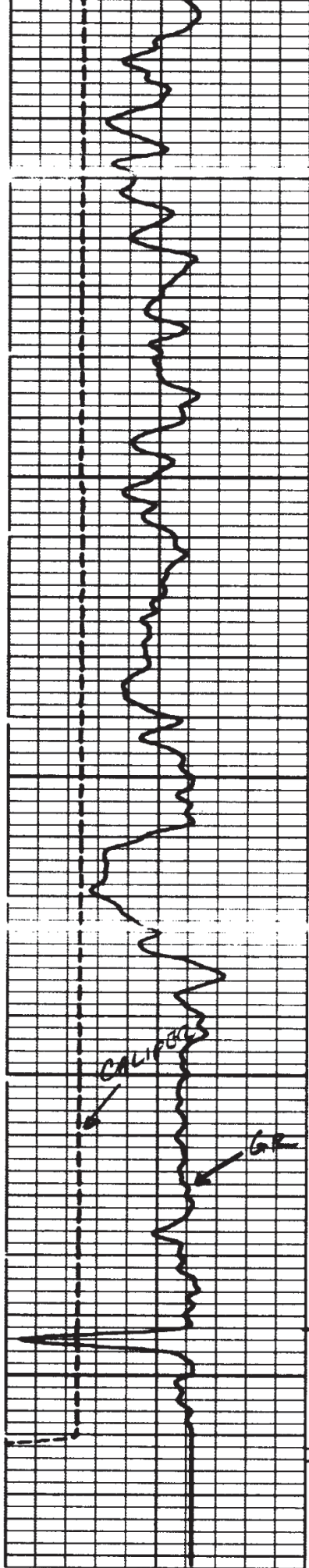


3000



3100

3200



3300

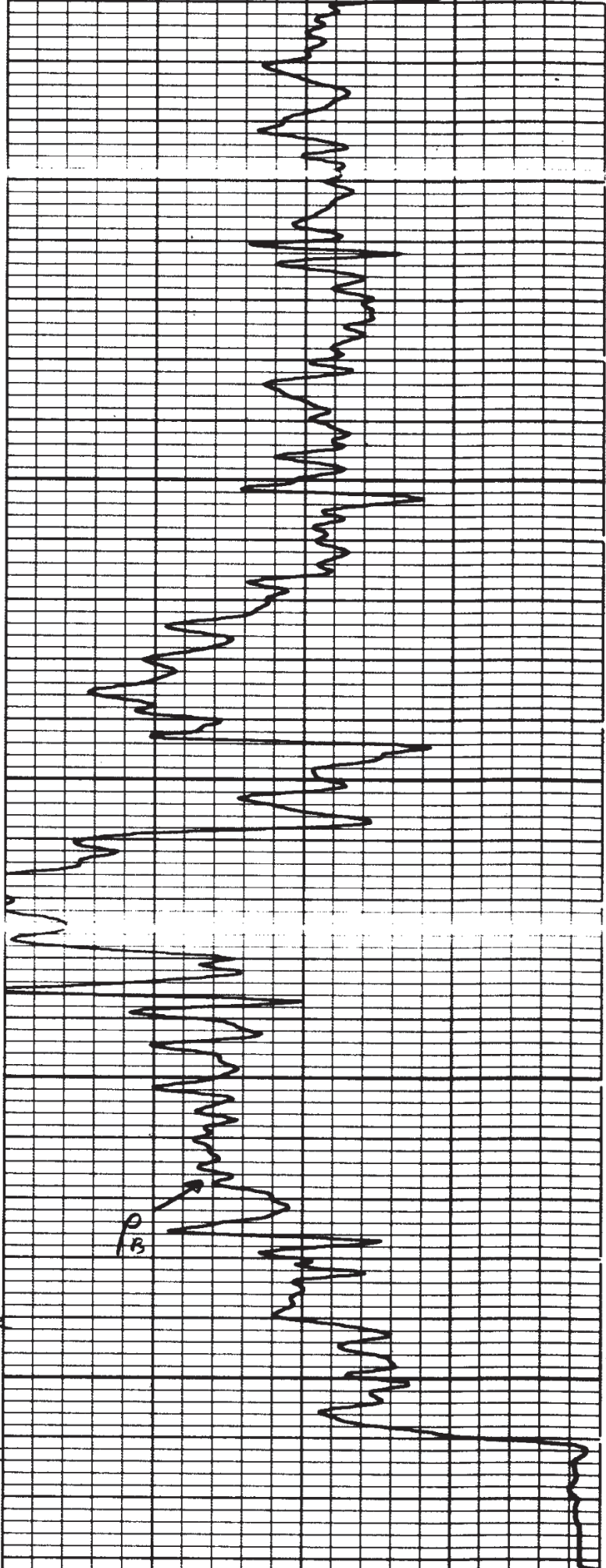
3400

GR FR

3500

FR

TD

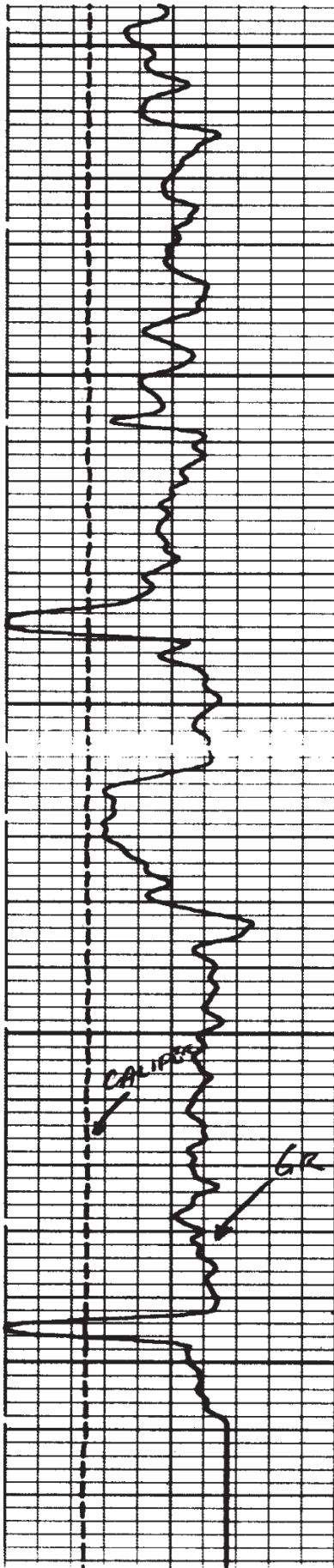


PB

19
19
19
19

17
17
17
17
17

REPEAT SECTION



3300

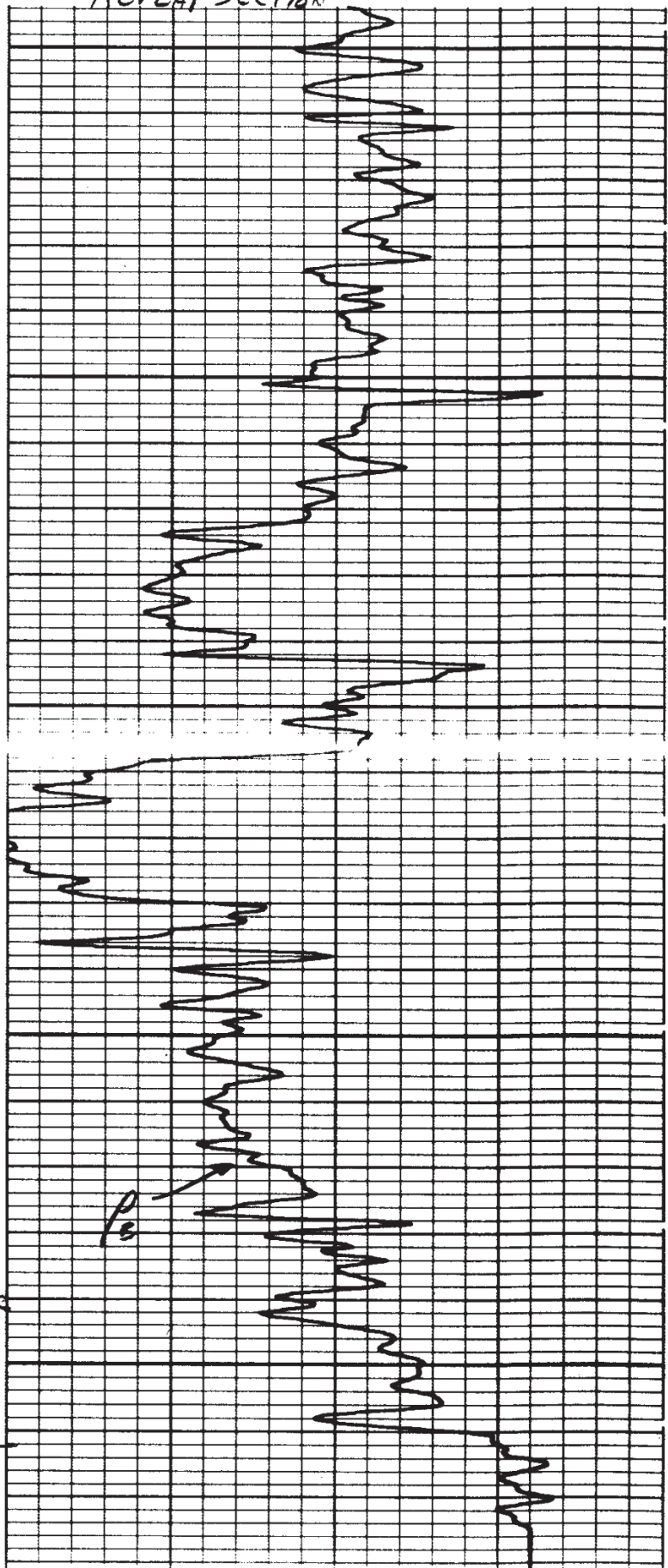
3400

GR FR

3500

FR

TD



17
17
17
17
17

CALI (IN)	
10.00	20.00
GR (GAPI)	
0.0	150.0

RHO (G/C3)	
2.000	3.000

16
16
16
16
16
16

BEFORE SURVEY CALIBRATION SUMMARY

PERFORMED: 79/03/28
PROGRAM FILE: NUC (VERSION 12.4A 78/12/ 8)

SGTE DETECTOR CALIBRATION SUMMARY

GR	MEASURED		CALIBRATED	UNITS GAPI
	BKGD	JIG		
	44	197	164	

PGTE DETECTOR CALIBRATION SUMMARY

FFDC NFDC	BLOCK	MEASURED	JIG	UNITS CPS
	CALIBRATED		CALIBRATED	
	0	323	336	
	0	579	527	

PGTE CALIPER CALIBRATION SUMMARY

CALI	MEASURED		CALIBRATED		UNITS IN
	SMALL	LARGE	SMALL	LARGE	
	7.2	10.0	8.0	12.0	

16
16
16
16
16
16

AFTER SURVEY TOOL CHECK SUMMARY

PERFORMED: 79/03/28
PROGRAM FILE: NUC (VERSION 12.4A 78/12/ 8)

PGTE TOOL CHECK

FFDC NFDC	JIG		UNITS CPS
	BEFORE	AFTER	
	336	341	
	527	529	

15
15
15
15

STEP SUMMARY

PERFORMED: 79/01/09
PROGRAM FILE: NUC (VERSION 12.4 78/12/ 8)

DETECTOR CALIBRATION SUMMARY

FFDC NFDC	BLOCK	MEASURED	JIG	UNITS CPS
	CALIBRATED		CALIBRATED	
	0	323	336	
	0	579	527	

227 228 229 230

0000000 , 0000000 , 0000000 >

0000
0000
0000
0000
0000
0000
0000
0000

