

APPENDIX F – SEISMIC REFLECTION DATA

Granite Springs Valley

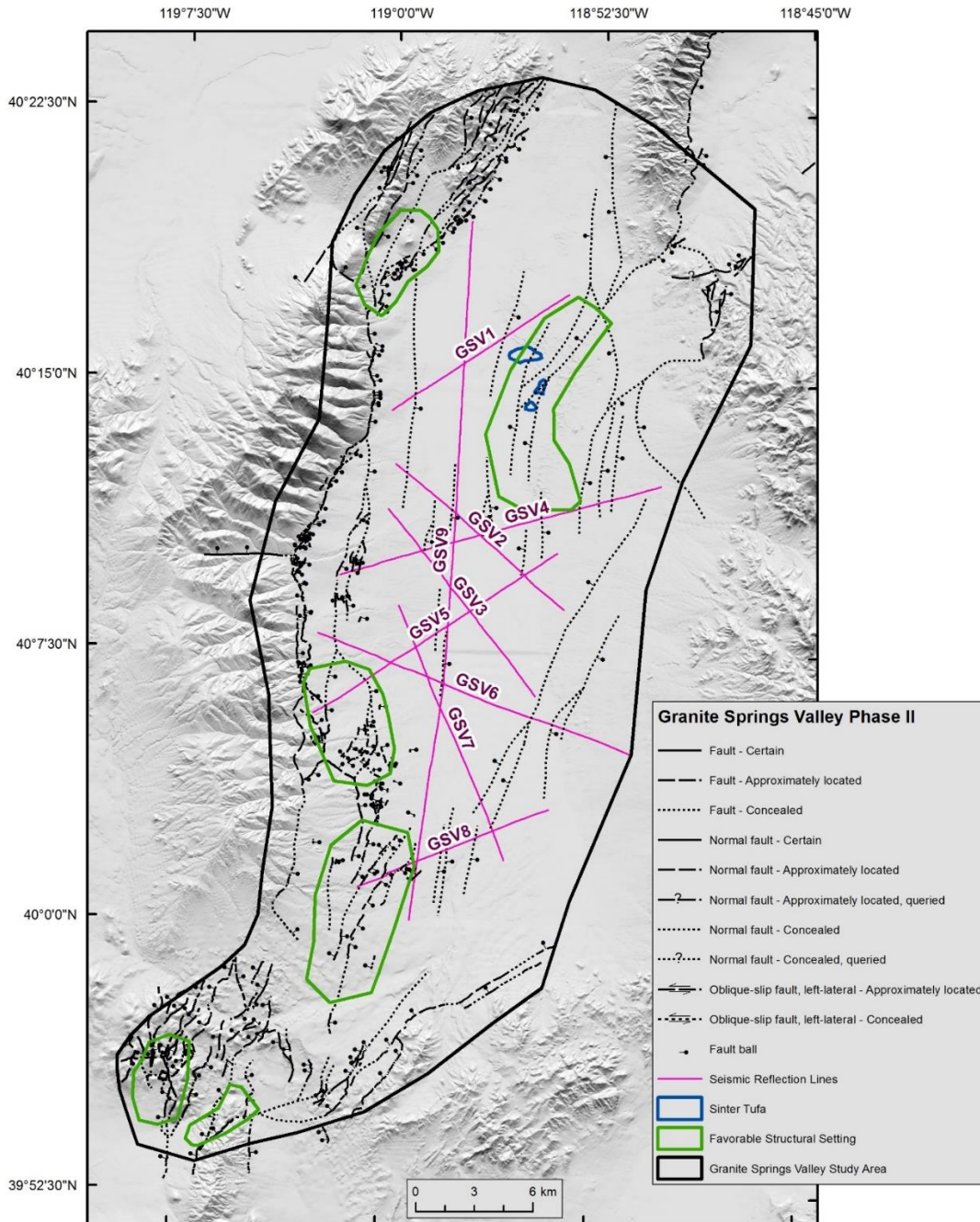
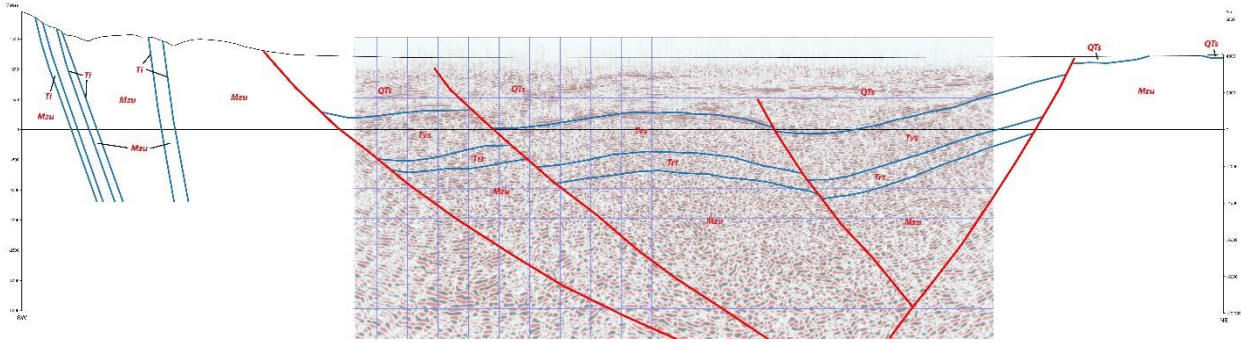
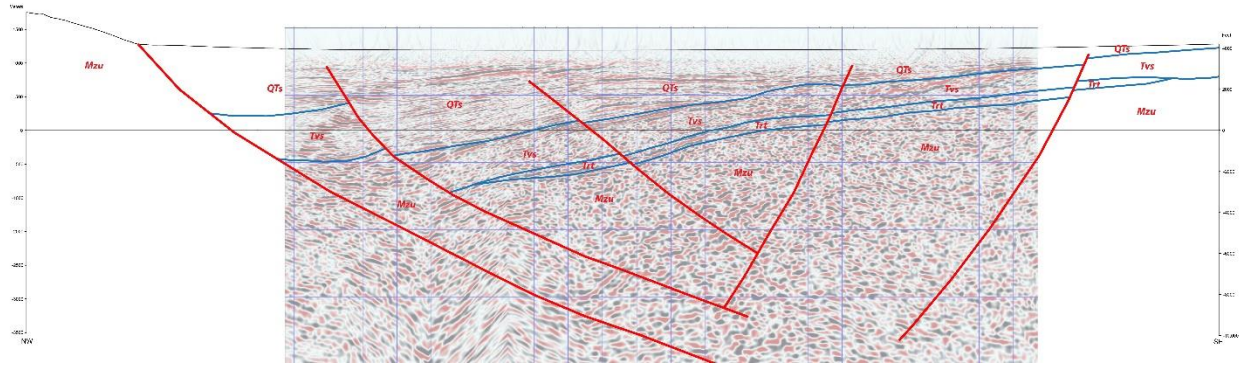


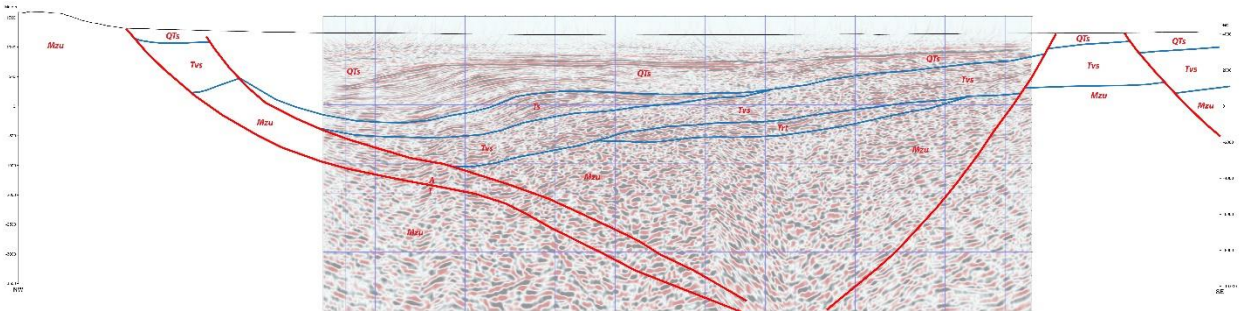
Figure F1. Digital elevation model of the Granite Springs Valley study area, showing locations of seismic reflection profiles, relevant faults, favorable structural settings, and paleo-geothermal features (sinter and tufa).



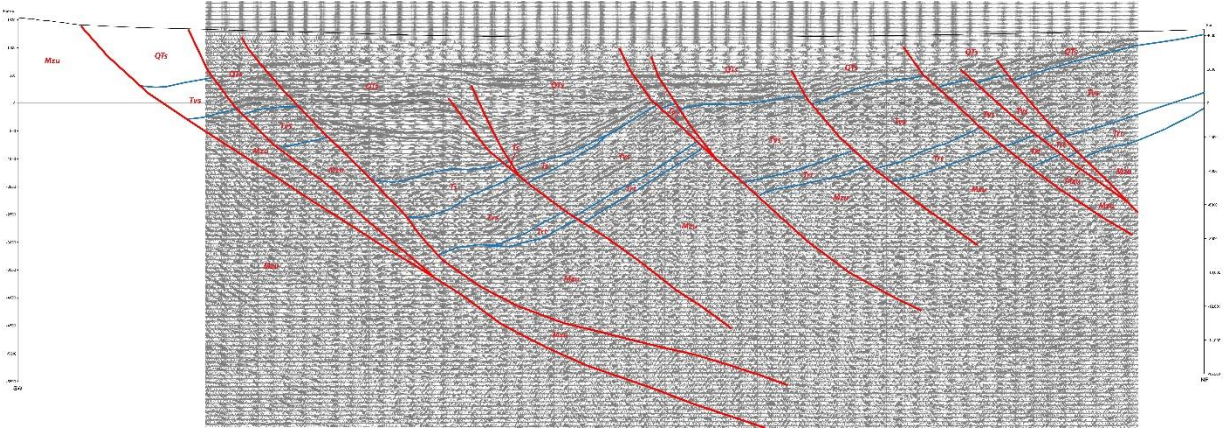
GSV1 (looking north): Seismic data owned or controlled by Seismic Exchange, Inc.; interpretation is that of the University of Nevada, Reno.



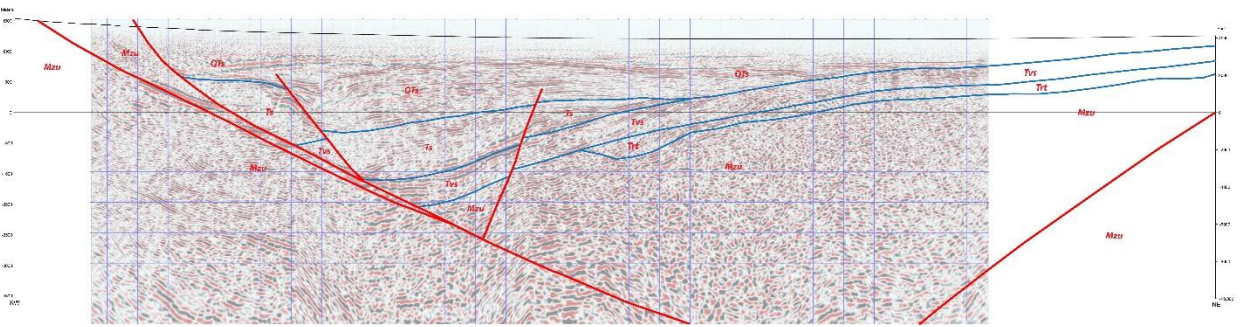
GSV2 (looking north): Seismic data owned or controlled by Seismic Exchange, Inc.; interpretation is that of the University of Nevada, Reno.



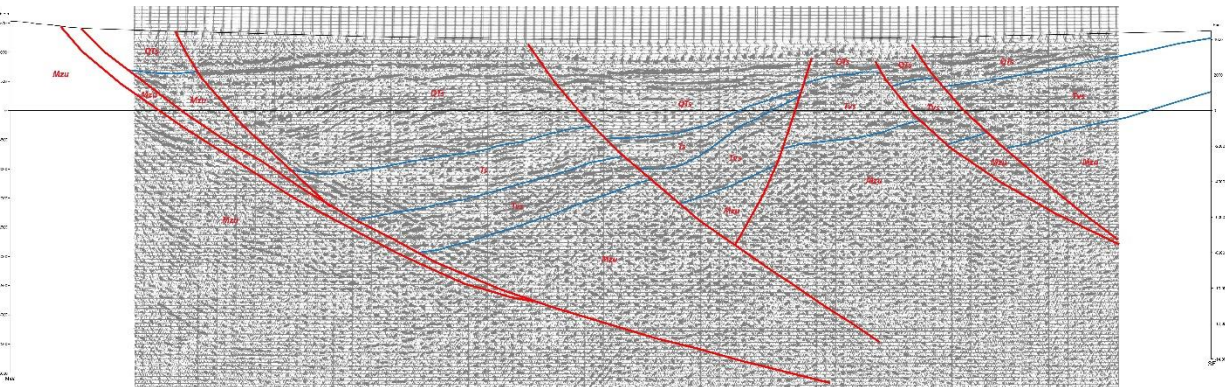
GSV3 (looking north): Seismic data owned or controlled by Seismic Exchange, Inc.; interpretation is that of the University of Nevada, Reno.



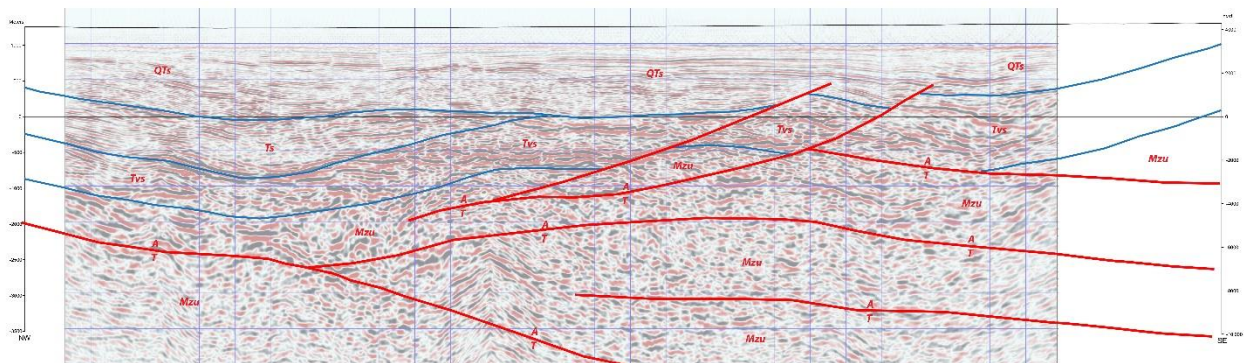
GSV4 (looking north): Seismic data owned or controlled by Seismic Exchange, Inc.; interpretation is that of the University of Nevada, Reno.



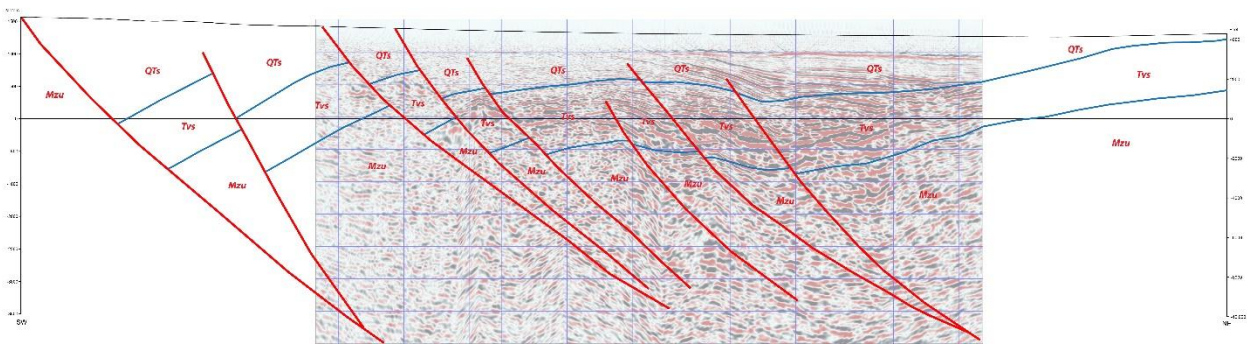
GSV5 (looking north): Seismic data owned or controlled by Seismic Exchange, Inc.; interpretation is that of the University of Nevada, Reno.



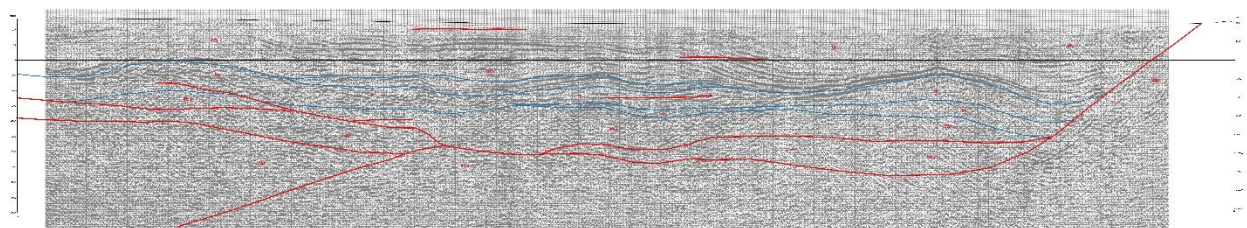
GSV6 (looking north): Seismic data owned or controlled by Seismic Exchange, Inc.; interpretation is that of the University of Nevada, Reno.



GSV7 (looking northeast): Seismic data owned or controlled by Seismic Exchange, Inc.; interpretation is that of the University of Nevada, Reno.



GSV8 (looking north): Seismic data owned or controlled by Seismic Exchange, Inc.; interpretation is that of the University of Nevada, Reno.



GSV9 (looking west, north on right): Seismic data owned or controlled by Seismic Exchange, Inc.; interpretation is that of the University of Nevada, Reno.

